



Lake George:

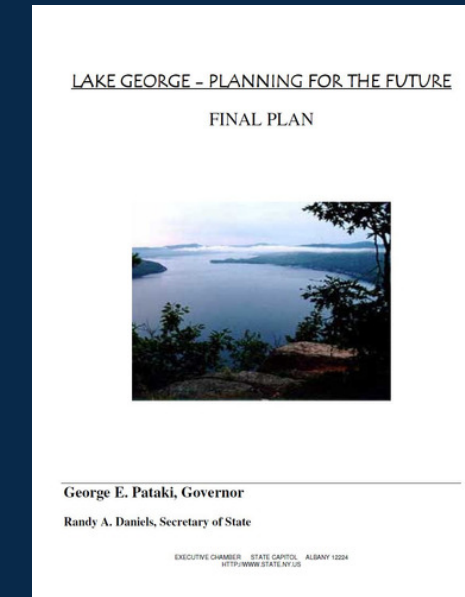
Advancing Watershed Priorities through Partnership

Lake George Watershed Coalition

Formed to implement the 2001 Watershed Management Plan (*Planning for the Future*)

Included 24 member organizations: 3 counties, 9 towns/villages, 7 NFP's, 5 state agencies

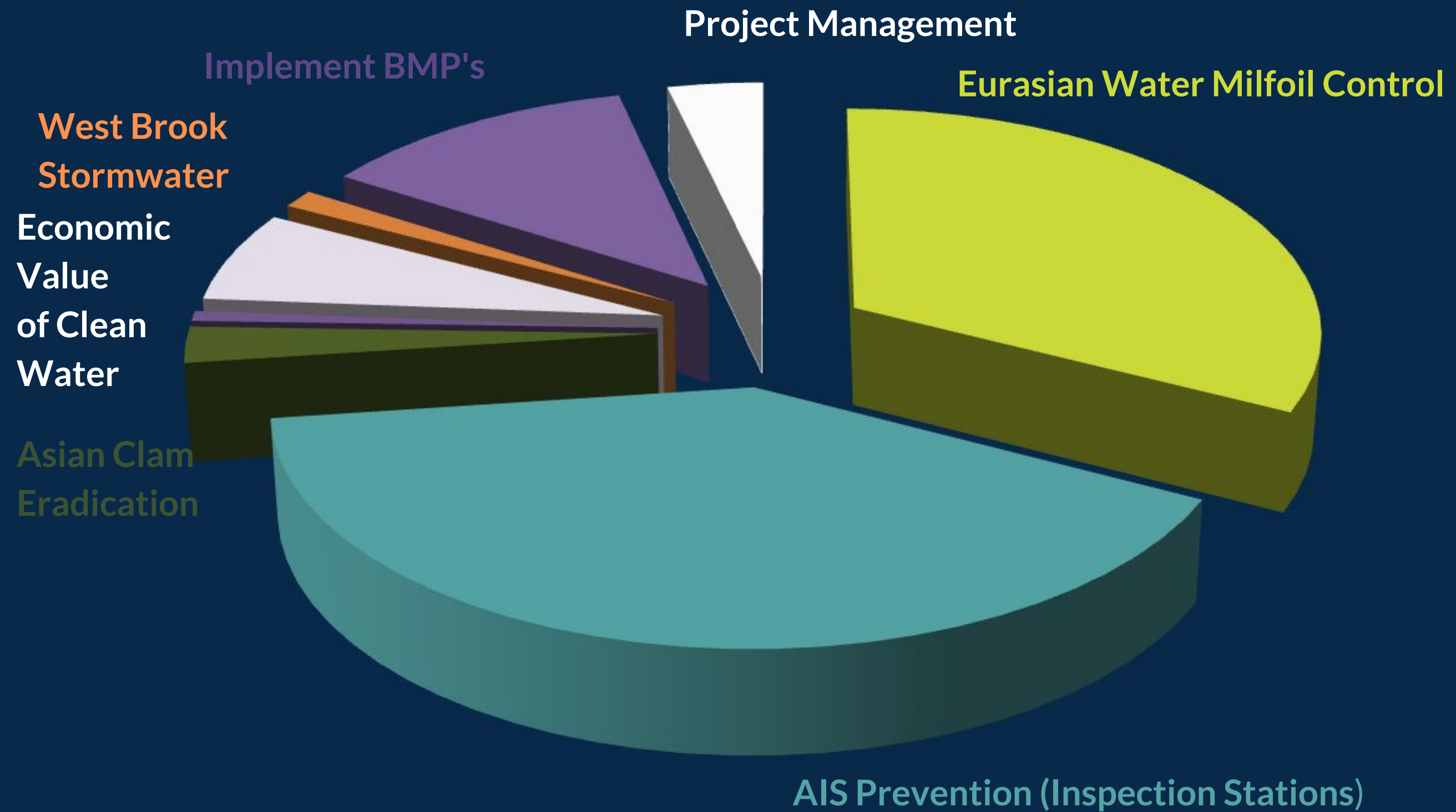
Single entity to apply for and manage grant funding for the Lake George Watershed





How is the Money Being Spent?

\$3,839,603



Boat Washing Program

\$562,284

State

\$988,447

Match



632 AIS Intercepted



2
Chinese
Mystery Snail



1
Rusty
Crayfish



65
Water
Chestnut



1
Variable leaf
Milfoil



123
Zebra
Mussel



386
Eurasian
Milfoil



53
Curly-leaf
Pondweed

boats inspected:



173,564

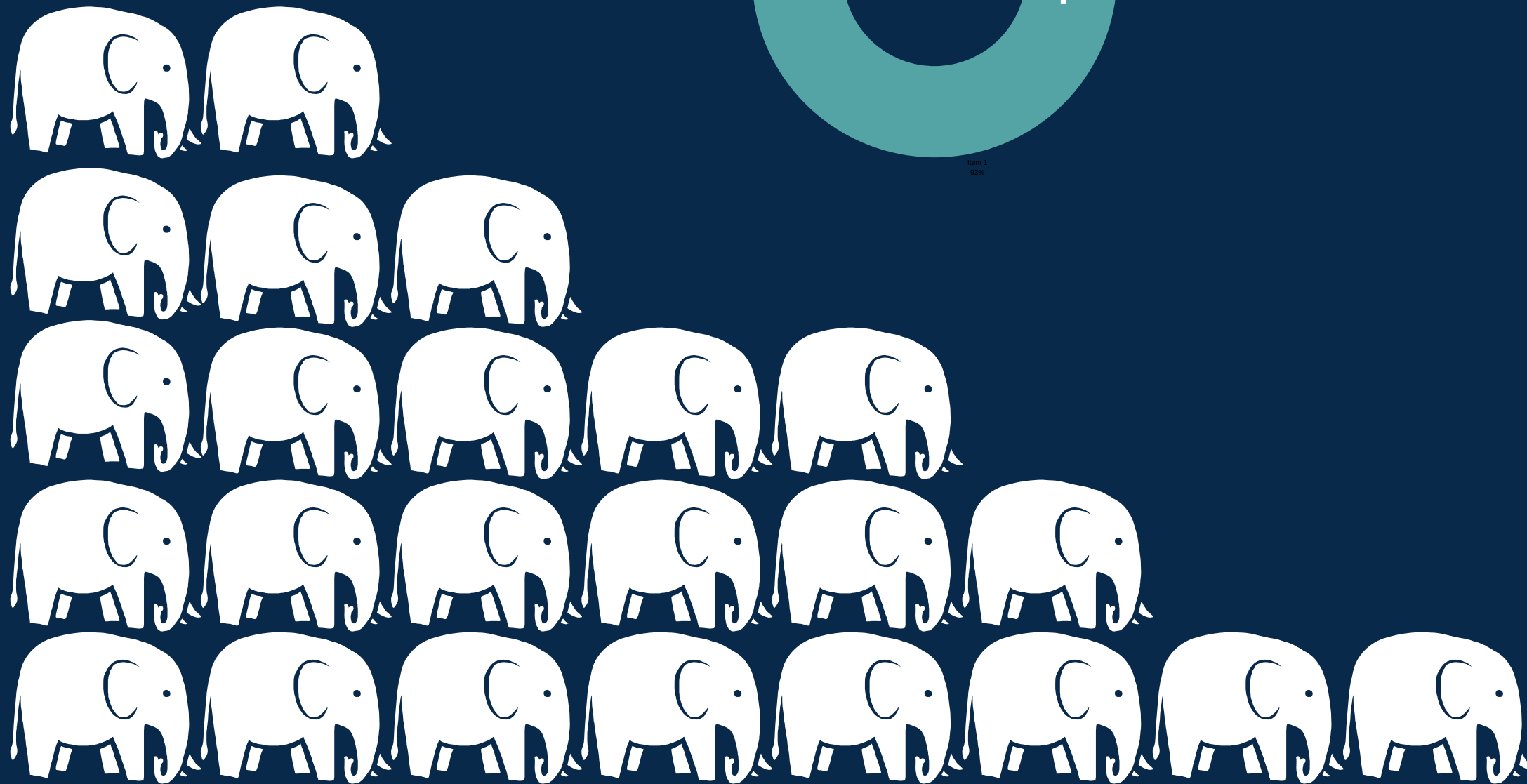
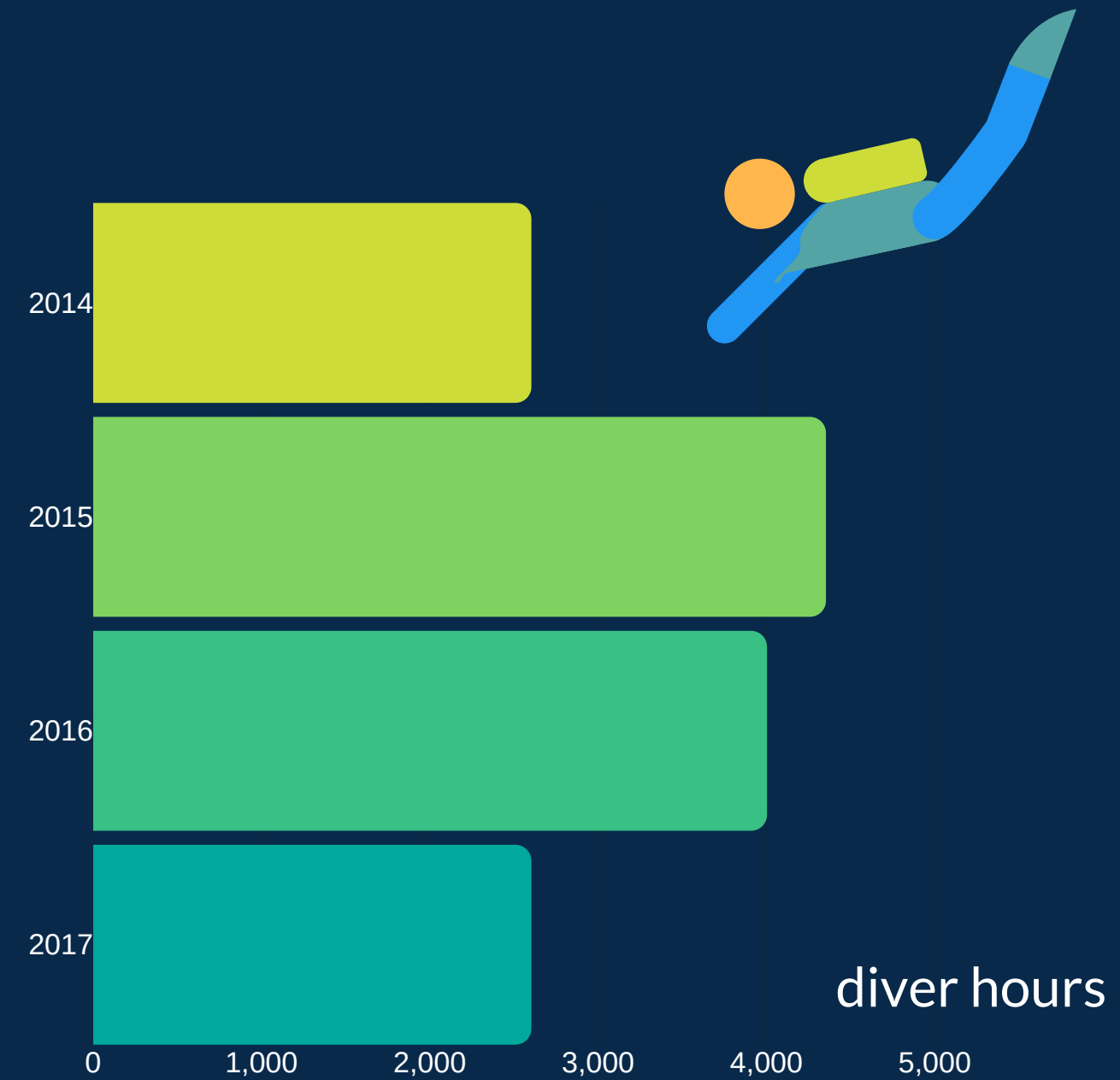
boats decontaminated:



8,285

Invasive Species Eradication

\$990,880 State
\$357,353 Match



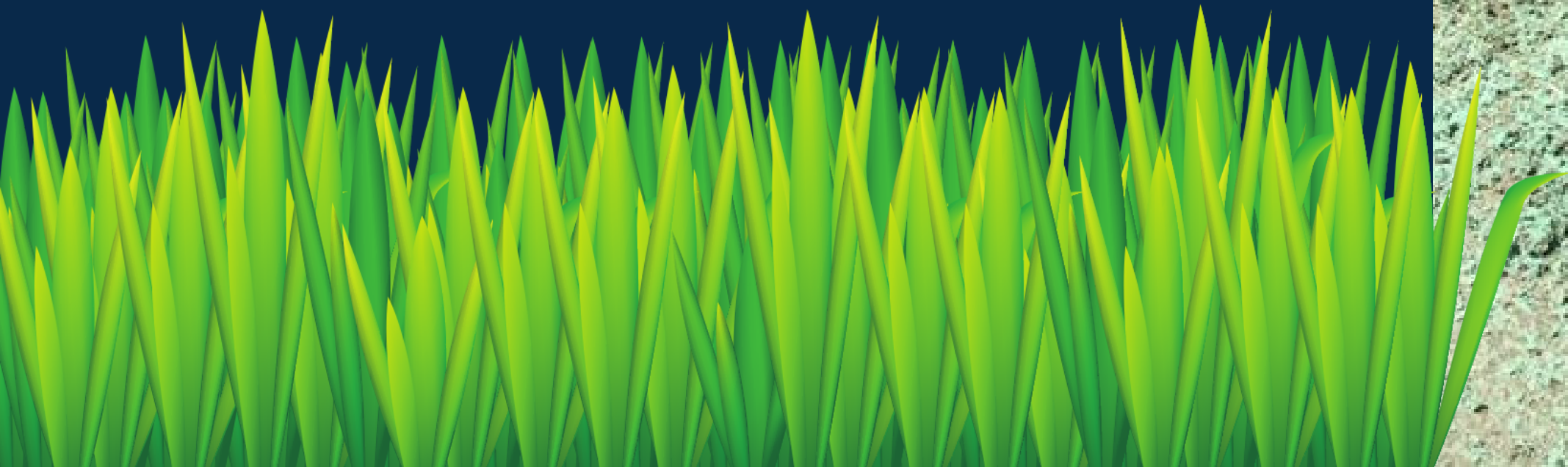
316,225 lbs = 12,650 bags removed



Erosion and Sediment Control

\$27,716

to highway departments in watershed, for erosion and sediment control projects, including hydroseeding and filter socks



Economic Value of Clean Water in Lake George

\$3.9B

residential assessed value

75%

of homes get drinking water directly from Lake George or private wells



timesunion

Lake George's Million Dollar Beach still plagued by mystery sewage

Summer hot spot reopened Thursday after one-c

By Brian Nearing Updated 6:25 pm EDT, Thursday, August 10,

The New York Times

TRAVEL

Refuge and Renewal on Lake George

Favorite Place

By BONNIE TSUI SEPT. 4, 2014

THE DAILY GAZETTE

Asian clams still spreading in Lake George

Large site found in Hague at lake's northern end

Stephen Williams @gazetteve | August 29, 2018

POST-STAR News Obituaries Sports E-edition Buy & Sell

Lake George on impaired water body list going on 16 years

GWENDOLYN CRAIG gcr@gpoststar.com Jul 4, 2018

Adirondack
EXPLORER

FRIDAY, OCTOBER 6, 2017

State puts \$4 million toward Lake George wastewater treatment plant

West Brook Stormwater Management Benefits

West Brook naturally cleans stormwater entering head of Lake George



Use findings to support replicating these ponds elsewhere



Analyze water samples at West Brook Ponds to determine effectiveness of project



Reduce Road Salt Entering Lake George



6
municipalities

\$40,000
in grants for equipment purchases



*"This actually represents the largest input of a pollutant into the region. It's over **double** the amount of nitrate and sulfate that's been input over the same period of time with the acid deposition."*

*- Dan Kelting, PhD
Professor, Paul Smith's College*

\$140,000 generated in admin revenue for Planning Department



Continue grant writing and administration for water quality projects throughout Warren County

Moving Forward



Assist with improving coordination



Schroon Lake CFA (2018)



Warren County Planning Group