

Chester Townwide Recreation Plan

February 2015



Acknowledgements

ADVISORY COMMITTEE

Curtis Austin, Warren County Safe Quality Bicycling Organization

Greg Beckler, Natural Stone Bridge & Caves

Don Butler, Tri-Lakes Business Alliance

Mindy Conway, Town Recreation Director

Ed Griesmer, Loon Lake Park District Association

Craig Leggett, Brant Lake Cycle Shop

Bernie McCann, North Warren School District

Mike McClure, Gore Mountain Trails

Fred Monroe, Supervisor, Town of Chester

Jason Monroe, Town or County DPW

Gene Montena, Conservation Club

Barbara Thomas, President, North Warren Chamber of Commerce

Edna Wells, Town Board

GRANT ADMINISTRATORS

Andrew LaBruzzo, Coastal Resource Specialist, NYS Department of State

Wayne LaMothe, Director of Planning, Warren County Planning Department

CONSULTANTS

Tracey Clothier, AICP, CEP, Senior Planner, the LA Group

Jackie Hakes, AICP, Transportation Planner, MJ Engineering & Land Surveying

Mary Jeanne Packer, Ghost Writers, Inc.

This project is being funded by the New York State Department of State through the Environmental Protection Fund Local Waterfront Revitalization Program. Matching funds are being provided by the Town of Chester and Warren County Planning Department, which is overseeing the project. The project consultant is the LA Group of Saratoga Springs.

TABLE OF CONTENTS

Executive Summary

Chapter One: Project Overview

Project Description	2
Creating Healthy Places to Live, Work and Play	2
First Wilderness Heritage Corridor	2
First Wilderness Heritage Trail.....	4
Other Recreational Initiatives Influencing the Project	6

Chapter Two: Vision for Recreation

Overview	10
Vision for Recreation	10
Potential as an All Season Destination for Recreation	10
Public Parks and Open Space Standards/Guidelines	14

Chapter Three: Inventory and Analysis

Blueway Description	16
Mountain Peaks Description.....	18
Chester Municipal Center	21
Dynamite Hill Recreation Area.....	22
Memorial Park (Future)	23
Pottersville Town Park	24
Gambles Park	25
Loon Lake Park	26
Loon Lake Town Beach and Boat Launch.....	27
Riparius Pocket Park	28
Starbuckville Dam	29
School Parks and Lands: North Warren Central School.....	30
State Parks and Lands: Eagle Point Campground	31
Scaroon Manor Day Use Area.....	32
Palmer Pond Trails	33
Hudson Riverside and Ice Meadows State Land Parcels	34
Snowmobile Trial Network	36
Pedestrian and Bicycle Network.....	38

Chapter Four: Recommended Projects and Implementation

Overview	41
Projects 1-12 Townwide Public Trail System	43
Project 14 Scaroon Manor Day Use Area Trail Extension.....	48
Project 15 Vanderwhacker Mountain Wild Forest Trail Improvements	48
Project 16 Snowmobile Trail Network Improvements	49
Project 17 Palmer Pond State Land Area.....	49
Project 18 Bicycle Pedestrian Improvements.....	50
Project 24 Chestertown Bike-Hike-Blueway Trail	52
Project 25 Dynamite Hill Recreation Area Improvements	53
Project 26 Chester Brook Nature Trail.....	55
Project 27 Town Administration Building Property Improvements	55
Project 28 Pottersville Town Park Improvements	57
Project 29 Gambles Park Improvements	57
Project 30 Loon Lake Pocket Park Improvements	57
Project 31 Loon Lake Town Beach Pedestrian Improvements	57
Project 32 Riparius Pocket Park Improvements	58
Project 33 Starbuckville Dam Pocket Park Improvements	58
Project 34 Memorial Park Improvements	58
Project 35 North Warren School Nature Trail	59
Project Implementation Chart	60

Chapter Five: Implementation and Marketing Strategy

Overview	66
Designated a Trail Coordinator	66
Develop Family-Friendly Interactive Trail Programs.....	66
Integrate the First Wilderness Heritage Corridor	66
Participate in the Adirondack Regional Economic Development Strategy	66
Implement a Comprehensive Signage Plan	66

LIST OF MAPS

Figure 1: Inventory of Recreational Resources.....	12
Figure 2: Trail Concepts Map	20
Figure 3: Projects Map	42
Figure 4: Conceptual Plan for Chestertown Pedestrian Circulation Improvements	53
Figure 5: Conceptual Plan for Dynamite Hill Recreational Area Improvements	55

LIST OF APPENDICES

- Appendix A Public Outreach
- Appendix B Transportation Memo: Bicycle and Pedestrian Connections
- Appendix C Comprehensive Signage Plan
- Appendix D NYS Recreation Law and Sample Landowner Agreement
- Appendix E Dynamite Hill Mountain Bike Trail Map and Construction Standards
- Appendix F Chester Healthy Community Mapping Project
- Appendix G Conceptual Framework for First Wilderness Heritage Trail – Corinth to Tahawus
- Appendix H Funding Sources

Executive Summary

The Town of Chester is preparing a townwide recreation plan to develop a network of interconnected trails and recreational facilities. The Chester Townwide Recreation Plan is an economic development initiative that taps outdoor recreation and heritage tourism strategies by increasing the public's awareness of the remarkable variety and quality of the recreation trails and facilities in the town and region. Optimizing the Town's recreational assets will help improve the quality of life for residents and expand visitor opportunities.

The Recreation Plan builds on the recreation and heritage tourism framework known as *First Wilderness Heritage Corridor*. *First Wilderness* is an inter-municipal revitalization strategy for the nine communities along the Upper Hudson River corridor and adjacent Delaware & Hudson rail line in Saratoga and Warren counties. The focus of *First Wilderness* is to have Adirondack Park communities complement rather than compete with each other and to use the unifying elements of the Hudson River and railroad to tie their future's together.

An Advisory Committee, made up of a cross-section of members of the community, is guiding the planning process. The Committee is seeking public input through a variety of venues designed to reach, inform and receive feedback from as many residents and visitors as possible. These include displays at Town Hall, North Warren Chamber of Commerce, and the weekly Farmers Market. Maps, drafts for comment, meeting notices, and newsletters are continually posted on the Town's website:

www.townofchesterny.org/chester-townwide-recreation-plan, and the project's Facebook page: www.facebook.com/ChesterTownwideRecreationPlan

A public workshop was held on July 30th to solicit ideas for areas suitable for the future development of new recreational facilities. Participants were asked - where are your favorite places- what recreational facilities need improvements-what other kinds of recreation are needed by residents and visitors? Some exciting possibilities include potential activity from the North Country National Scenic Trail and possible trail opportunities with the new state land parcels known as the "Ice Meadows".

Meeting participants expressed the desire to concentrate recreation and trail efforts on the Chestertown hamlet area including the following sites and connections between those sites: Town Hall; Dynamite Hill; North Warren School; Panther Mountain; and Starbuckville. Initially, implementation should focus on several projects that can move forward immediately with volunteer assistance and little To No Funds. The Following Projects Potentially Fall Into This Category:

- Townwide Public Trail System Public Trailhead and Trail up Panther Mountain.
- Snowmobile Trail Network Improvements
- Chestertown Hike-Bike-Blueway Trail Feasibility Study to Construct an Off Road/Shared Road Trail From Route 9/Route 8 Intersection North To Scaroon Manor.
- Dynamite Hill Recreation Area Improvements
- Chester Brook Nature Trail

The project is being funded by the New York State Department of State through the Environmental Protection Fund Local Waterfront Revitalization Program. Matching funds are being provided by the Town of Chester and Warren County Planning Department, which is overseeing the project. The project consultant is the LA Group of Saratoga Springs.

Chapter One: Project Overview

Project Description

The grant for the Chester Townwide Recreation Plan (Recreation Plan) was obtained from the New York State Department of State (NYSDOS) through Warren County's First Wilderness Heritage Corridor (FWHC) program. The project is the preparation of a town recreation plan that includes the following elements:

- Population trends and an assessment of the need for future recreational facilities;
- Inventory and condition of existing recreational facilities;
- Proposed enhancements for existing facilities;
- Identification of areas suitable for future development of new recreational facilities;
- Concept plans for townwide trail routes and Dynamite Hill Recreation Area; and
- Implementation strategies for the proposed site improvements and facilities.

The Recreation Plan is ultimately a series of projects that are prioritized in terms of their readiness and level of interest to the community. It was developed in context of past and present local and regional studies and plans. The *Chestertown Main Street Enhancement Plan (2001)* and *Pottersville Main Street Enhancement Strategy (2002)* have recommendations for pedestrian and public access elements that are relevant to this project. These recommendations have been included in this plan where applicable and appropriate.

Creating Healthy Places to Live, Work, and Play

More recently, the Town of adopted plan from Creating Healthy Places to Live, Work, and Play (CHP2LWP), a NYS Health Department initiative to promote healthy lifestyles and prevent obesity and type 2 diabetes. Administered through the Glens Falls Hospital, a *Healthy Community Mapping Project* (draft plan) was developed for the Town that focuses on increasing opportunities for physical activity and healthy eating in the hamlet of Chestertown. As a direct result, the Town of Chester and the North Warren School District will receive funding to create a model healthy community for its residents. The majority of the funds will go towards:

- Playground on the grounds of the Town Administration Building near the basketball courts;
- Trail markers on the Panther Mountain trails and on the Chester Creek Trail;
- Information kiosk, benches and trash cans for Main Street;
- Tennis court improvements;
- Playground equipment for the school; and
- Brochure to promote various hiking opportunities in the town of Chester.

First Wilderness Heritage Corridor

The Recreation Plan was funded through the recreation and heritage tourism framework known as *First Wilderness Heritage Corridor* (FWHC) (*Figure 1*). FWHC is an inter-municipal revitalization strategy for the nine communities along the Upper Hudson River corridor and adjacent Delaware & Hudson rail line in Saratoga and Warren counties. The focus of *First Wilderness* is to have Adirondack Park communities use the unifying elements of the Hudson River and the Saratoga and North Creek Railway to integrate visitors with the shared history, local landmarks, and cultural stories that make the area an interesting place to visit. For many visitors, these mini-destinations along their larger trip represent an essential part of the hiking and biking experience. The following graphic is utilized in kiosks around the region to illustrate the entire corridor and assets and facilities in each of the communities.

FIRST

New York State Adirondack Communities
Along the Upper Hudson River

REDISCOVER

THE FIRST WILDERNESS CORRIDOR



WILDERNESS CORRIDOR

www.firstwilderness.com

THE STORY

JOHNSBURG/NORTH CREEK

The hamlet of North Creek remains the Town of Johnsburg's central force and business district. Historically, garnet and titanium mining, mineral shipping and logging brought work, visitors and industrial entrepreneurs. The railway system provided transportation for adventure travel to the wilderness by the famous, wealthy and the wise. Rising alongside the Upper Hudson River, this historic community continues their success of year-round tourism adventures both on the mountains and on the river. This revitalized scenic freight train operation is taking the lead and providing more Adirondack economic growth. www.johnsburgny.com

RIPARIUS/RIVERSIDE & CHESTERTOWN

Riparius/Riverside is a small and picturesque waterfront hamlet in the town of Johnsburg. It parallels the Upper Hudson River and its original railway station is on the National Registry of Historic Places. This crossroad is located on Route 8 west of Chester, Holtzow, Pottersville, Schroom Lake and Hague and east of Newvortown, Johnsburg, North Creek, Indian Lake and Blue Mountain. The community shares a wonderful past where Thomas Cole and Asher Durand first began to paint landscapes, thus beginning the Hudson River School of Painting. www.johnsburgny.com + www.townofchestertown.org

THURMAN/THE GLEN

The Glen is a flagstop at a highway crossroad that sits in the town of Johnsburg. In the 1930s however, this was a major rail stop for travelers moving into the area as summer guests. Here, you will find a lovely seasonal Adirondack B&B, grocery store and white water rafting company. Major attractions including horseback riding and fine dining are less than 20 minutes away. Regionally, the area is filled with folklore and bares a sensitive ecological community that extends south to Stony Creek. www.thurman-ny.com

THURMAN/WARRENSBURG

Days gone by saw a thriving intersection here as these 2 towns and 2 major rivers, the Hudson and Schroom, came together to transport manufactured goods to Metro NY cities. The railway spurred off at Thurman Station, crossed the Hudson and traveled 2 miles into the historic garment district. These communities continue to work, educate and support each other. They are home to small logging, maple and cottage industry businesses, health services, historic B & B lodging properties, roadside diners, and Oscar's Smokehouse. www.thurman-ny.com + www.warrensburgchamber.com

STONY CREEK/1000 ACRES RANCH

Stony Creek borders the Hudson River, where small lumber mills, logging companies, and a large tannery were the center of business until after WWII. The changing logging industry brought waves of country style living characterized by refurbished logging camps, ranch resorts, the creation of northeast rodeos and old fashion-fiddle stomping square dancing. Word spread fast and the "Four Corners" became the place to be. The station platform stop at the 1000 Acres Ranch still provides guests with western style atmosphere and uninterrupted tranquil views of the Adirondacks. www.stonycreekny.com

HADLEY/LAKE LUZERNE

The Hadley-Lake Luzerne area serves two communities that span the Hudson River in two counties on two rivers. The Bridge of Hope showcases Rockwell Falls to the north and the Saratoga confluence to the south. After the Civil War, the influx of tourists by train increased business and room nights at the local inns and dude ranches. This area is one NYS's most frequented white water rafting, tubing and kayaking sites. Hadley's fire tower and the parasitic brown bridge listed on the National Registry, Hadley connects to Stony Creek and Saratoga Springs, while Lake Luzerne reaches to the Lake George Area, twelve miles away. www.townofhadley.org + www.townoflakeluzerne.com

CORINTH/QUEENSBURY

The quaint community of Corinth in Saratoga County lies adjacent to the Hudson River. The bend in the river exposes a cascading passage well creating a dramatic boundary to Fingershetcher Park that connects to Curtiss Park and onto the Corinth Village Park. The Hudson River's mighty power was a major influence here facilitating the creation of the International Paper Company's logging industry headquarters for nearly 100 years. Corinth's location is 15 minutes to neighboring Saratoga Springs, Queensbury, City of Glens Falls, The Adirondack Northway (Exit 18) and the Hadley/Lake Luzerne Area. www.townofcorinthny.com + www.queensbury.net

SARATOGA SPRINGS

Saratoga Springs is a celebrated Victorian town full of rich architecture and enriched by traditions. "Health, History and Horse" characterizes this American town including being historically known for its healing waters by the Native Americans. Drinking fountains and public bath houses still exist. Nearby is the historic Saratoga Battlefield, once a turning point of the American Revolution. Saratoga thrives with the same friendly atmosphere as it did when established in 1851. The horse racing industry has been a major attraction making it a place to be. www.saratoga-springs.org



This brochure was prepared for the New York State Department of State with funds provided under Title 11 of the Environmental Protection Fund Act.

Logos for First Wilderness Corridor, SVC, I Love NY, and NYS Department of State. Contact: Warren County Planning Department, Municipal Center Human Resources Building, Third Floor, 1340 Street Route 9, 516.761.6409, Lake George, New York 12845.

WHAT TO DO

JOHNSBURG/NORTH CREEK

The outdoor recreation industry is a primary generator of economics in the North Creek/Core Mountain Area. Major snow and water sports can be found in these high peaks as well as gondola rides, garnet mine tours, a scenic train, unique shopping, fine dining and quaint lodging properties. The scenic train operator has repositioned North Creek as a destination for travelers from around the world while also partnering with local attractions to provide a complimentary shuttle to local venues. The Tannery Pond concerts and Main Street projects are continuously evolving for audience delight. www.gorechamber.com

RIPARIUS/RIVERSIDE & CHESTERTOWN

A quiet community less than 5 miles from North Creek and the North Warren Area of Chestertown, Riparius provides easy access to quaint lodging, restaurants, major activities and events. Canoe, kayak and rafting are just out the back door, while downhill and water skiing, mountain climbing, hunting, trapping, fishing, biking and hiking are available a short distance away. In either direction are many wonderful gift shops, artisan galleries, natural caves, music venues, a miniature train museum and an abundant array of outdoor sports and amusements. www.gorechamber.com + www.northwarren.com

THURMAN/THE GLEN

Thurman's visitors are renewed with the many outdoor offerings that are close by. Besides the many river activities, the nearby neighboring communities offer horseback riding, hiking, biking, fishing, skiing and camping. To complement educational learning and exploration, opportunities are available through local history museums, art galleries and outdoor adventure guides in the neighboring towns of Chester, Thurman and Warrensburg. As a vacation destination, there are plenty of natural resources, arts and crafts, historical sites, and local history museums. Spring maple and fall farm tours are favorite activities for all ages. www.thurmanstation.org

THURMAN/WARRENSBURG

Thurman and the Town of Warrensburg are just a river crossing apart. Snowmobiling remains an important winter activity for residents and wilderness snow lovers. River floating and winter skiing are actually walkable from the train station. Thurman provides visitors with a flash from the past with Maple Sugar and Fall Farm tours. Residents are proud of their culture, their music, horsepun tales, history tours and hard work. Trapping, logging and farming continue to be an important way of life while local museums, amusement parks and cultural institutions are nearby. www.thurmanstation.org + www.warrensburgchamber.com

STONY CREEK/1000 ACRES RANCH

1000 Acres Ranch rests on the shores of the Hudson River and remains a seasonal resort providing horseback rides and golf everyday. The Town of Stony Creek accents the four seasons of recreation with camping, hunting, fishing, biking, hiking, rafting, kayaking, canoeing, snowmobiling, snowshoeing and trapping to name a few. The new Dean Farm Recreational Park Area is the latest FWHC project to be developed for residents and guests to be able to enjoy the opportunity for good healthy exercising and relaxation within the pristine mountains of the Adirondacks. www.stonycreekchamber.com

HADLEY/LAKE LUZERNE

These communities offer 3 miles of waterfront, and a variety of year round sports including sledding, horseback riding, snowmobiling, river rafting, kayaking, and canoeing. The spring season kicks off with a Maple in April Festival that leads to lots of hiking, bicycling, fishing, summer concerts, a tradition, and town-wide book and garage sales. Smead Memorial Park, the Hadley Historic Rivers Trail, Dean Mountain White-water Park and Pavilion Park are recreational locations. Adirondack Folks School and the Luzerne Music Camp are a must see. www.lakeluzernechamber.org

CORINTH/QUEENSBURY

The Jessup Landing Trail connects the Corinth parks and is the focal point for many special occasions. Year-round themed events and summertime camping and water sport activities are plentiful while snowmobiling and snowshoeing adorn Corinth's wintery countryside. Queensbury's West Mountain Ski Resort is less than 15 minutes away. Local organizations are sponsors to many events as this community has a strong pride in working together to spotlight small businesses like antiques and collectible shops, a specialty guitar shop, a winery, produce, honey and perfume farms that can all provide for an interesting educational experience. www.adirondackchamber.org

SARATOGA SPRINGS

Since the 1700s, Saratoga Springs has been attracting visitors year round with its diverse array of venues such as horse racing, horse shows, race and dance museums, racino, battlefields, a national cemetery, Victorian B & Bs, spas and hotels, gourmet restaurants, convention centers, colleges, music and performance entertainment centers, NYC Baller, jazzfestivals, celebrity shows, arts, golf, ski and boat, world class shopping, grand wedding locations, and wineries. It also provides robust medical services, an Amtrak station, and a neighborhood shopping. Saratoga is a vacationer's delight and a photographer's paradise. www.saratoga.org

Photos compliments of: 1000 Acres Ranch, Greg Klingler, Sue Wilder, Cynthia Cameron, Mannix Marketing and Pam Moira.

For more information visit FirstWilderness.com



First Wilderness Heritage Trail

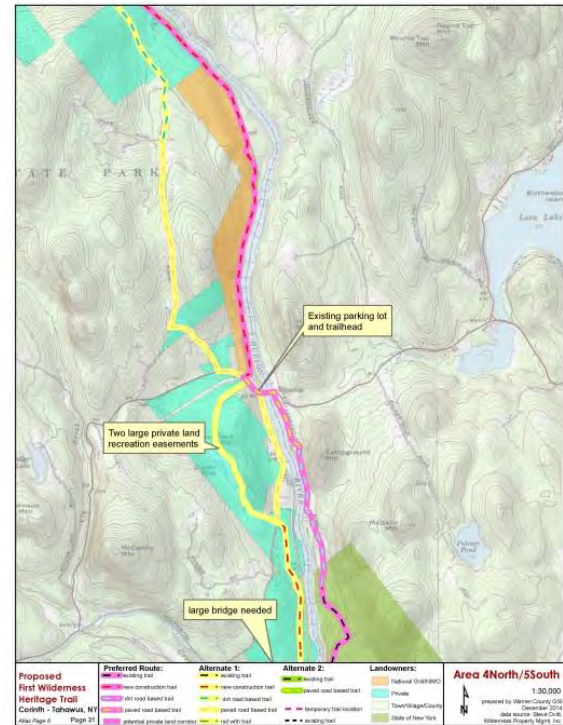
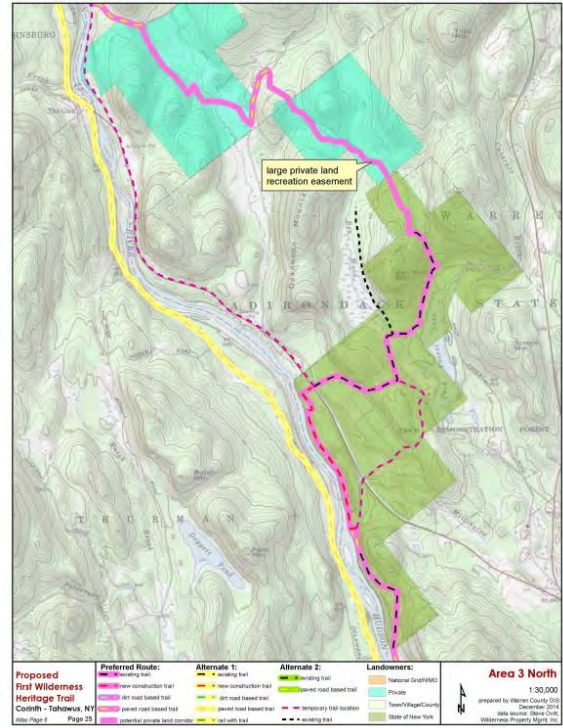
A major implementation of the FWHC is a regional trail concept developed for the Hudson River corridor between Corinth and Tahawus. The *First Wilderness Heritage Trail Conceptual Framework for Corinth to Tahawus* was completed in 2014. This trail, more than 80 miles in length, is designed as a hiking and mountain biking experience that connects the small, distinctive communities along the Upper Hudson River.

The preferred trail corridor through the Town of Chester is on the east side of the Hudson River. This preferred route would make a quiet and scenic trail easily negotiated by foot or bike along the top of the bank overlooking the river. Existing large state land holdings that are part of the Lake George Wild Forest would allow access to the river's edge and to Palmer Pond. This corridor starts at a parking area just north of The Glen Bridge along the Friends Lake Road. The road borders the river closely. The river corridor is wild without intrusion or sight of a building from this point to the Riparius. There are two large private land holdings in the middle of the state lands that may limit the potential of this corridor, however, it may be possible that easements could be acquired on those lands. It would require the construction of new trail on the southern large parcel of private land by Washburn Eddy.

At the Riparius Bridge hikers can cross the bridge and continue north on the trail through the Town of Johnsbury and the North Creek Trail System. Following Old River Road north to the Moxham Mountain Trail would lead into the North Country National Scenic Trail (see discussion below).



Hudson River Ice Meadows



Other Recreational Initiatives Influencing the Project

The Recreation Plan builds upon the foundation of other regional studies and plans. It is part of a recreational network of resources that is influenced by:

- Lake George Wild Forest
- North County National Scenic Trail
- Warren County Safe & Quality Bicycle Organization
- Adirondack Park Recreation Strategy

Lake George Wild Forest Unit Management Plan ((LGWF UMP)

The LGWF consists of 71,133 acres of Wild Forest lands in Essex, Warren, and Washington Counties that's owned by New York State. Open to public recreation, these lands comprise one of the most well-known and heavily-used portions of the Adirondack Park. The majority of Wild Forest lands in the LGWF are located within the towns of Bolton, Hague, and Horicon in Warren County and in Dresden and Fort Ann in Washington County. The unit is generally bounded on the north by the Warren County line, on the west by the Hudson River, and on the east and south by the Adirondack Park boundary. LGWF comprises approximately 2,432 acres in the Town of Chester. These lands include several parcels along the Hudson River known as the Ice Meadows and Hudson Riverside. Both were previously owned by Finch Pruyn and purchased by the state in 2013 (see Chapter 3). LGWF is presently managed under the *Draft 2006 Lake George Wild Forest Unit Management Plan*. These lands are illustrated on Figure 2, "Inventory Map."

Vanderwhacker Mountain Wild Forest Unit Management Plan (VMWF UMP)

The Vanderwhacker Mountain Wild Forest (VMWF) is located in the central Adirondack Park within the Towns of Minerva, Newcomb, Schroon Lake, North Hudson (Essex County), Johnsbury, Chester (Warren County), and Indian Lake (Hamilton County). The unit is made up of almost 2 dozen noncontiguous parcels, covering 91,854 acres in area and has 204 miles of boundary line. The bulk of the unit is made up of a single parcel of approximately sixty thousand acres, located mainly within the Town of Minerva. The planning area is bounded on the north by the High Peaks Wilderness Area (HPWA), on the east by Hoffman Notch Wilderness Area (HNWA) and Schroon Lake, on the south by State Route 8 and the Siamese Ponds Wilderness Area (SPWA), and on the west by the Hudson Gorge Primitive Area (HGPA) and the westerly Newcomb town line. VMWF comprises approximately 1,181 acres in the Town of Chester. These lands include several small remote parcels along the northern boundary with the Town of Minerva which may provide future hiking opportunities. Two additional parcels exist as intensive use areas: Eagle Point Campground and Scaroon Manor Day Use Area are located on the shore of Schroon Lake and separated from two parcels of VMWF by State Route 9. VMWF is presently managed under the *2005 Vanderwhacker Mountain Wild Forest Unit Management Plan*. These lands are illustrated on Figure 2, "Inventory Map."

North Country National Scenic Trail



The North Country National Scenic Trail (NCNST) is a national trail administered by the National Park Service that will span thousands of miles across the US. Management of this trail in New York is through NYSDEC. A 2014 Revised Draft Adirondack Park Trail Plan was released by NYSDEC on its website <http://www.dec.ny.gov/outdoor/39658.html>

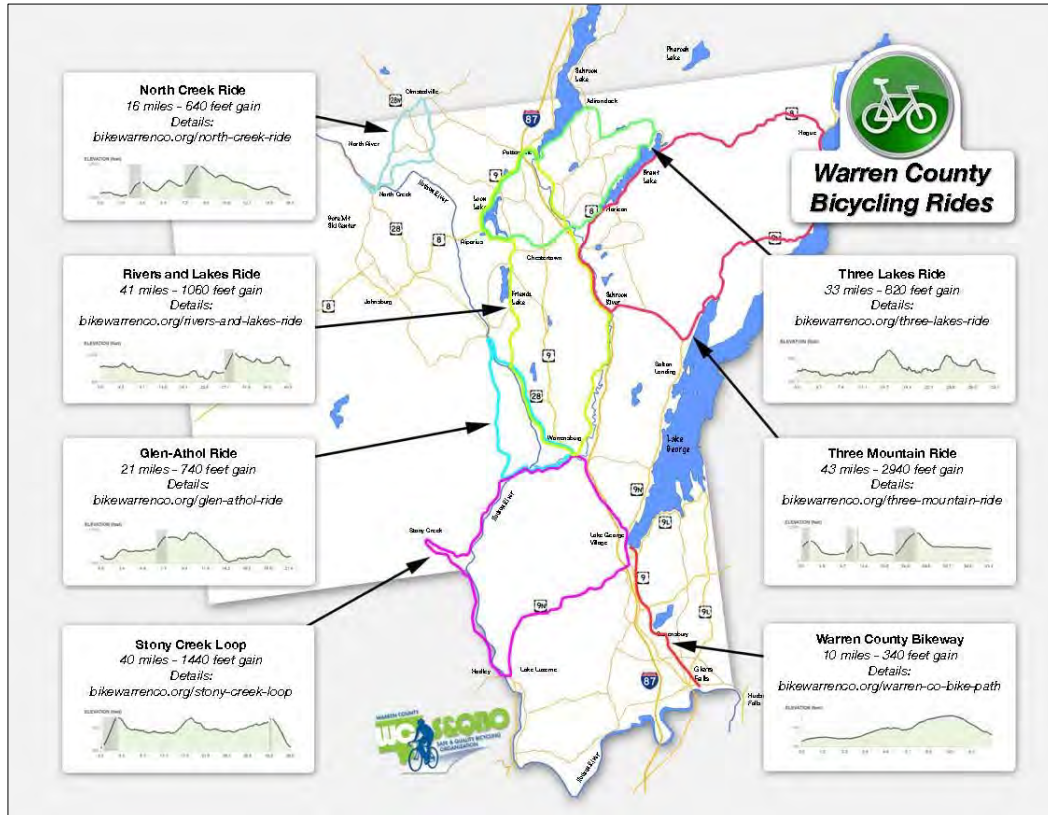
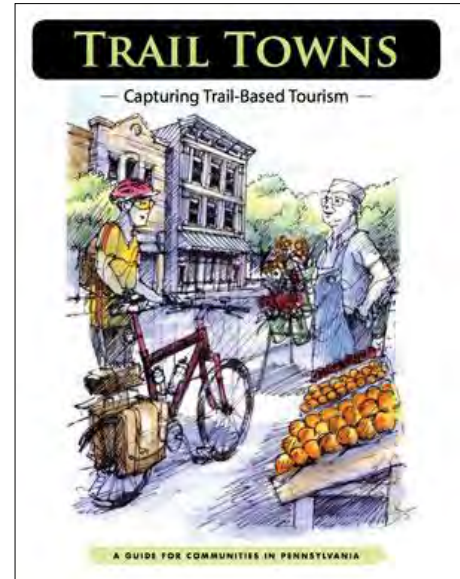


The plan recommends following approximately 81 miles of existing foot trail and constructing 38 miles of new trails within the Park. In addition, it is estimated that 39 miles of temporary connections along roads will be initially utilized to make connections along this route. It will stretch across the center of the Adirondacks, drop south into the hamlet of North Creek to the North Creek Train Station, and continue across the Hudson River turning northeast then trail turns northeast on *State Route 28N* for 0.4 miles. Between the Hudson River and the *Moxham Mountain Trail* on Vanderwhacker Mountain Wild Forest, there is a break in the route. The route follows the entire Moxham Mountain Trail for 2.0 miles before crossing 14th Road and continuing to its easternmost trailhead at Crown Point State Historic Site at Lake Champlain.

The Adirondack Economic Development Strategy

The Adirondack Economic Development Strategy is an economic development plan for the Adirondack Park communities. This project is being led by Hamilton County through the Adirondack Partnership and administered by the Adirondack Community Housing Trust. The approach focuses on getting real projects planned, designed and funded through the three New York State Regional Economic Development Councils covering the Adirondack Park.

The economic development plan seeks to advance the Park as a world class destination by developing strategies that implement Adirondack Trail Towns Initiative; revitalize traditional lodging properties; improve tourism facilities and attractions; launch a tourism ambassador program; expand the Adirondack Web Portal; and promote the Park as a destination for sports recreation, wellness and recovery through unified tourism branding and marketing efforts Park-wide. One of the strongest initiatives to emerge from the plan is the *Adirondack Trail Towns Concept: Connecting Trails, Towns and Sustainable Economic Growth in The Adirondack Park*. The Trail Town program is a consistent approach that capitalizes on the Adirondack Parks' vast array of natural, historic, and cultural resources by connecting these assets through local trail systems.



Warren County Safe & Quality Bicycle Organization (WCS&QBO)

WCS&QBO advocates for a comprehensive bicycling program which offers a variety of experiences from family-safe on-road and off-road cycling to mountain biking throughout Warren County. They developed the *Warren County Bicycle Plan 2012* with the Adirondack Glens Falls Transportation Council and several brochures describing various on-road bicycle routes throughout Warren County. Specific routes have been developed around scenic resources including a loop around Brant Lake, Loon Lake and Schroon Lake in the Town of Chester.



Chapter Two: Vision for Recreation

Overview

Chestertown is a destination for tourism, recreation, retirement and trade because of its natural resources and exceptional infrastructure of tourism facilities and programs. It is also highly attractive to those who live and work here due to an exceptional quality of life it provides.

Vision for Recreation

A “vision for recreation” for Chestertown was developed below by reviewing the outcome of the workshop conducted with the Advisory Committee, the summary of public comments received, and the recreational planning initiatives from the First Wilderness Heritage Corridor Master Plan and Update.

Establish and trademark Chestertown as a family and age-friendly destination for experiencing high quality and diverse recreation and as a premier destination for soft adventure tourism.

Potential as an All Season Destination for Recreation

Chestertown exists within the Adirondack Park which is the largest state protected area in the contiguous United States. It is located just north of the Lake George Region which is part of a seasoned and sophisticated framework for tourism development.

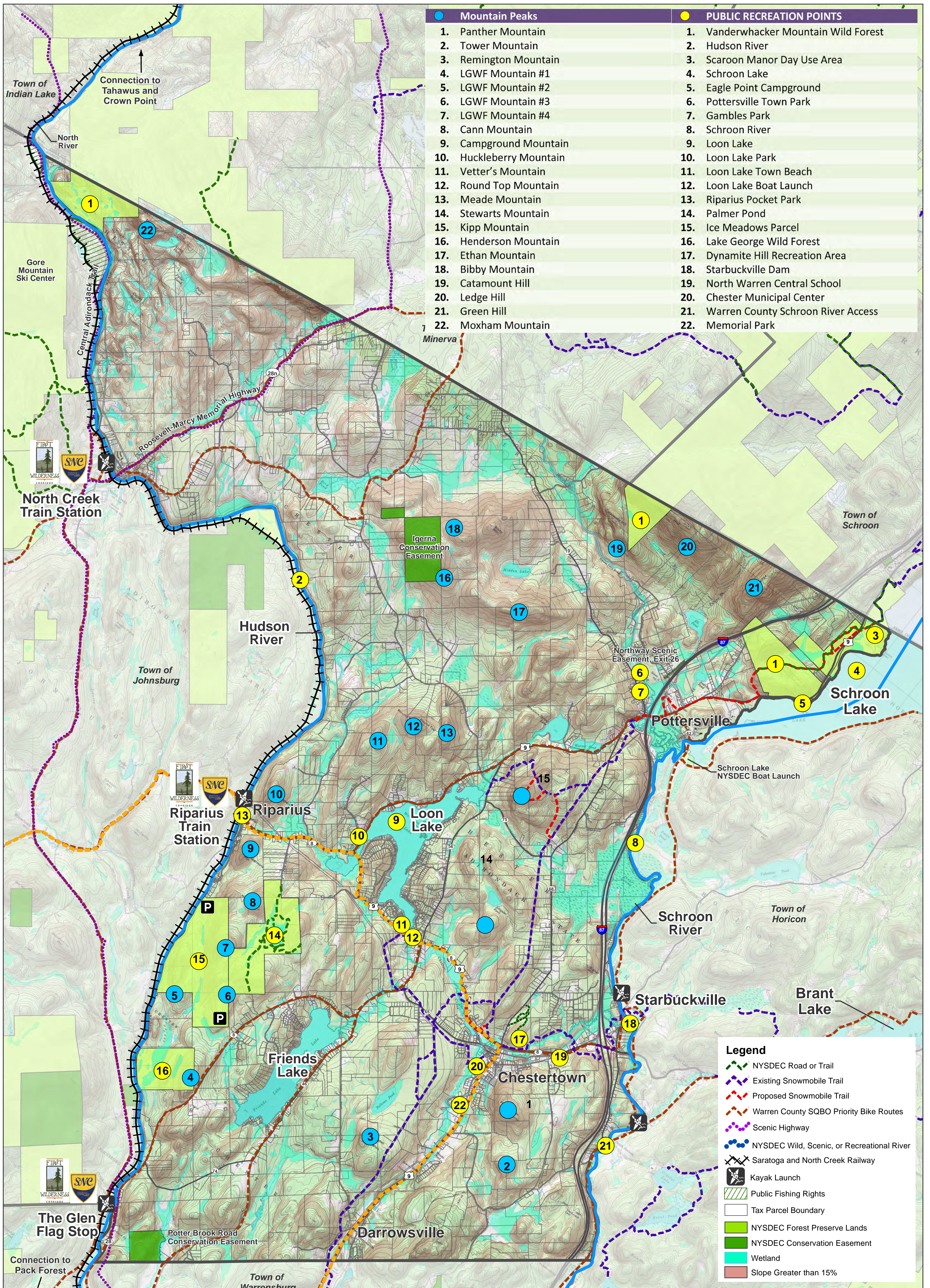
Chestertown also represents an area with growing businesses that support and promote active recreation. These types of businesses include rock climbing, mountain biking, scuba diving, parasailing, rope adventure courses and zip lines, competitive sailing, horseback riding, skiing, cross-country skiing, snowshoeing, ice climbing, and whitewater rafting, tubing and kayaking. “glamping”, an upscale tent camping experience is planned for Chestertown in 2015.

Local recreational needs have shifted to a resident and visitor population that is significantly more active and interested in the outdoors. The residential base is comprised of an increasing number of active retirees that are middle class, healthy and utilizing Chestertown as their home base. This group requires trail resources that range from easy to moderately challenging that are available on a year-round basis.

The North Warren Chamber of Commerce is reporting a steady increase in the number of families and tour groups requesting information about trails for both hiking and biking. Visitors only recently have access to a consistent database of trails information through the Adirondack Recreational Web Portal (<http://visitadirondacks.com/recreation>). Visitors often come to Chestertown having experienced other places where recreational opportunities are well coordinated with other visitor services. They expect this level of service and are disappointed when it is not available. The project will remedy this by integrating trail use into the existing regional tourism economic development strategy.

For the typical visitor to the region, hiking and biking activities represent only a small component of their vacation activities. Until now, Chestertown’s outstanding trail resources remain a “best kept secret.” It is one of the few communities that has its own publically-owned downhill and cross country ski centers. The Recreation Plan aims to enhance this image and trademark recreation as one of the primary reasons for visiting Chestertown. One strategy to enhance the public's interest in trails is to create a continuous trail system that connects Dynamite Hill to a trail network that leads to the 22 mountain peaks throughout the Town. It would be a public hiking and biking network comprised of a

network of existing paths, trails, and on-street bicycle routes that connect existing trail hubs and provide connections between recreation sites, community parks, attractions, services, business districts, and land and water access points. The trail system will provide the visitor various levels of difficulty and types of terrain. The concept would include the development of a challenge program for people of all abilities to learn about and take advantage of opportunities for. It will seek to integrate bikeway design into all main road improvements and make all public transportation “bike and family friendly.” It will incorporate elements of the First Wilderness Heritage Corridor heritage tourism through the themes to convey the historic, environmental, and other “stories” related to the regions. These stories will be told through consistent interpretive and wayfinding signage that incorporates web-linking (see Chapter 5 for Signage Plan). A concept for a townwide trail system is found on the Draft Trails Concepts Map.



The purpose for this initiative is to make Chestertown the hike-bike gateway for Adirondack Park. It would become a well-known destination for beginner or novice hikers and bikers to become oriented in these sports before venturing out further into the Adirondacks. This plan calls for the installation of good signage and innovative programming, plus potentially using professional guides to help family and friend groups find interesting and exciting ways to explore the area in a safe and competitive way. Naming the trail system (*Chester Trail Mix* has been suggested) is a way to brand the idea and a way for the public to identify Chestertown as an all-season place for recreation. Several ideas that focus on branding areas for hiking include the *Saranac Lake 6ers* and the *Round the Lake* program from the Lake George Land Conservancy. Those programs are highlighted below.



Saranac Lake 6er

"Saranac Lake introduced the *Saranac Lake 6er* program in 2013 which offers both opportunities to climb all six and earn a hikers patch or to climb all six in both winter and spring all in one day to become an Ultra Sixer. The views from these ten peaks include over 5,000 square miles of mountains, lakes, and rivers. Forty of the historic 46 Adirondack High Peaks can be seen, plus almost 200 other peaks and landmarks are also identified. A few of the mountains including Baker and St. Regis are great hikes for the littlest adventures, as they are less aggressive and still offer spectacular views. In addition to the four "Saranac Lake 6er" peaks, it also identifies the fantastic views from Whiteface and Cascade (both High Peaks), Azure and Mt Arab (both with fire towers), Jenkins (Paul Smiths Interpretive Center) and Owls Head (Malone).

Hike the Saranac 6 Peaks when you choose and celebrate your accomplishments! Tradition will have it that once a person finishes climbing the Saranac Lake 6 then he or she is entitled to ring "The 6er Bell" which will be erected upon Berkeley Green in the heart of our village. Once the Village of Saranac Lake receives the correctly completed information, each finisher will be sent a confirmation letter with an official member number (all numbers awarded in order of completed applications received) plus a "6er" patch and sticker. Your name will be added to the member roster." (<http://saranalake6er.com/>)

Round the Lake Challenge



"The *Round the Lake Challenge* is a free member benefit of the Lake George Land Conservancy, designed to educate about the Lake George watershed's natural, historical and cultural resources by encouraging first-hand experiences. For the Challenge, LGLC has identified 31 Missions throughout the watershed, each showcasing Lake George's unique natural, scenic, historic or cultural resources. The number of Missions will increase as more preserves and trails are available to the public. Missions include hiking the trails of Tongue Mountain, Sleeping Beauty, or any of LGLC's parks and preserves; canoeing or kayaking Jabe Pond and Northwest Bay; exploring Gull Bay and the exhibits at Up Yonda Farm; walking the LaChute River Walk Interpretive Trail, and visiting museums and historical roadside markers. The goal is to complete at least 20 of the 31 RTL Missions at your own pace and become an official Round the Laker! Registered members receive a Round the Lake Mission map, checklist, membership card and access to our online Round the Lake community."

(<http://www.lglc.org/events-and-programs/round-the-lake-challenge/>)

Public Parks and Open Space Standards/Guidelines

Recreational standards were researched to measure the Town’s desired new recreational facilities against the standards for recreational facilities as published by the National Recreation and Park Association in 1990 and updated in 1996. A general standard of 10 acres park land per 1,000 population is still an accepted guideline. The standard for determining the amount of playground space for the community is based on 1-2 acres per 1,000 population. An additional guideline is 30-50 percent of the total park and recreation land should be set aside for active recreation (includes playgrounds and playing fields). The general guideline for trails is one trail system per community (Castleman, C., Open Space Guidelines and Standards: A Guide to Understanding the New Versus the Old, 1996). The 2003 State of Colorado Small Community Park & Recreation Planning Standards further suggest replacement of the NPRA standards since they are not appropriate for small communities and instead focus on the location, size and specific elements for individual playgrounds rather than the number needed in the community. Recommendations would be more responsive if the changing needs of the residents are considered and calculated into the recreational planning process.

Recreation standards are utilized as guides for planning as directed by community goals rather than absolute numbers. In 1996, the National Recreation and Park Association reported:

“A shift away from reliance of an absolute national standardto increasing community self-direction where the number of acres for park and recreation land is based on what the citizens determine is best for themselves” (Mertes & Hall, Park, Recreation, Open Space and Greenway Guidelines. 1996, NRPA. ISBN 0-9603540-1-8).

This is important because there are multiple new playground locations that have been recommended within the community over recent years. The process of making the best decisions on need and location for a new playground should be based on a mix of factors including national standards, available resources including funding, and the location where it would receive the highest use. The population of Chester has seen fairly consistent growth in the last 60 years. The Town experienced its greatest growth between 1970 and 1990 when it grew by 1,100 residents. Since 1950, the population grew from 1,927 residents to its peak of 3,614 in 2000. The 2010 Census reported the population at 3,355, down 259 people. The population during the summer months is considerably higher, and recreation demands dramatically increase. For the purposes of this exercise, it is assumed that there are an estimated 5,000 people living in the town of Chester.

The table below indicates how the Town fits into the general recommended standards for active recreation and trails.

Recreation Type	Standard Per 1,000 Population	Recommended Based on Chester Population	Town of Chester Resources
General Park Land	10 acres	5 acres	150 acres
Playgrounds	1.25 acres	6.25 acres	Pottersville Playground 2.5 acres North Warren School 0.25 acre Loon Lake Beach 0.25 acre
Trails	1 trail system per region	NA	Dynamite Hill Recreation Area 120 acres

A comparison analysis of the existing Chester recreational facilities against recommended industry standards indicates that the Town is under capacity in terms of playground area. The two small full playgrounds in Chester comprise a land area of about 3 acres. The Town is therefore carrying a deficit of 3.25 acres for playground space. Additional concerns regarding facilities are that there is no playground in the center hamlet of Chestertown or one that serves the entire area west of Route 9. Also, the playground equipment in Pottersville is in need of repair and updating. Three new areas are under consideration for a new playground – Chester Town Administration Building, Dynamite Hill Recreation Area, and Town-owned lands off Route 9 adjacent to Chestertown Cemetery.

Chapter Three: Inventory and Analysis

The recreational network in Chestertown is comprised of extensive network of waterways, mountains, and parks. This inventory and analysis describes these places and provides ways for opportunity and improvement. Figure 1, "Draft Inventory of Recreational Resources," locates all points of recreation including water access. The Town's geography provides a remarkable dynamic due to its east and west borders being flanked by two powerful and extraordinarily beautiful rivers. These two blueways have the capacity to work together with the mountains and manmade facilities to provide residents and visitors with outstanding, challenging and interesting experiences. This chapter begins with a general description of the blueways and mountain peaks and is followed by a more detailed inventory of the Town, School District and State recreational facilities. The snowmobile trails and bicycle/pedestrian network is discussed last. Each section discusses needs and opportunities which assist in guiding the recommendations that are outlined in Chapter Four.

Blueway Description

A blueway is a water trail that is developed with launch points, camping locations and points of interest for canoeists, paddle boarders and kayakers. The Town of Chester is bordered on the west by the Hudson River and on the east by the Schroom River. Both are highly prized by fishermen and are widely utilized for recreation. The two main lakes are Friends Lake, a residential community with no public access, and Loon Lake, a primarily residential community with public access in the way of a beach and launch plus several commercial marinas that support motor boat rentals, water skiing, kayak, paddle boarders and canoe rentals. Palmer Pond is state-owned 31-acre pond listed as one of top fishing waters for brown and rainbow trout. While canoes and kayaks can be launched at this site, owners must walk them in from the parking area. Palmer Pond has a long history of fish management Palmer Pond and is managed as a coldwater pond to enhance it native and introduced trout species. Chester Creek is a small stream that begins at the Loon Lake dam outlet flowing east and releasing into the Schroom River at Starbuckville. A tributary feeding into Chester Creek exists behind the Town Administration Center. Some of Chester Creek is navigable by kayak or canoe but much of it flows through private property. There is no formal public access to Chester Creek. Trout Brook is a more substantial stream that flows southeast and empties into the Schroom Lake outlet at Pottersville. Public access is available at Gambles Park but is dependent on water levels of the Brook. Approximately 5.5 miles of the western shoreline of Schroom Lake is the Town of Chester. Between the lake and the Starbuckville Dam there are several miles of river which control the water level of Schroom Lake. The dam is owned by the Schroom Lake Park District (*SLPD*), which is a legislatively appointed board with representatives from the towns of Chester, Horicon and Schroom.



Trout Brook at Natural Stone Caves

Hudson River

The Hudson River in this 21-mile section varies from flatwater to rapids. The 13-mile section from North River to Riparius is rated as Level II-III. From North River to North Creek, the river picks up speed with two rapids with swift water in between. This upper section is good for those just learning how to paddle whitewater. The rapids become more difficult after passing under the bridge in North Creek. This section is appropriate for intermediate

paddlers. The 8-mile section between Riparius and the Glen is rated as level III has more challenging rapids with rock islands and hard surfing waves. The river depth in this location is reliable and rafting and tubing activities are not appropriate. Public Fishing Rights are established at various sites on a 2-mile stretch of the west bank of the Hudson River south of North River. These are permanent easements purchased by the NYSDEC from willing landowners that permit anglers the right to fish and walk along the bank (usually a 33' strip).

There are 3 kayak/canoe access points along this stretch-all on the west bank of the Hudson River. The most northerly is just north of the North Creek Train Station, followed by a site just below the Riparius Bridge, and just south of the Glen Bridge at the Chester/Warrensburg municipal boundary. There are no put in or put out sites on the Chester side of the river.



Riparius Bridge Pocket Park



Hudson River Canoe/Kayak Access Point at Johnsburg

Schroon River

The Schroon River begins south of the Schroon Lake State Boat Launch to the municipal boundary with Warrensburg. The 3-mile section south to Route 8 Bridge is a flatwater paddle. This section is also deep and wide enough for light motor boating. Upon reaching the Starbuckville Dam, paddlers can access the public take-out site on the east side of the Schroon River just south of the Route 8 Bridge. Class II rapids are found throughout the river between Starbuckville Dam and the South Horicon Bridge. The next put in is located on the Horicon side just south of the South Horicon Bridge. This section of river is more tranquil and is utilized by canoes, kayaks, rafters and fishermen. The next put in/take out is located on the River road just north of Riverbank (Exit 24) in the Town of Bolton.



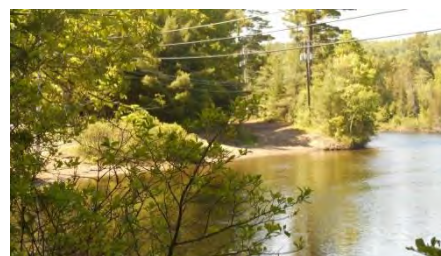
Starbuckville Dam



Starbuckville Dam



Kayak Access at South Horicon Bridge



Canoe/Kayak Access at Horicon South of Schroon Lake State Boat Launch

Needs and Opportunities

- The points of public access on both rivers are not well understood by the general public and are therefore underutilized. There are no public maps that accurately provide information on the points of public access. Few of the sites are marked, all are difficult to see from the water, and parking is underdeveloped. These points have been mapped on Figure 1, "Draft Inventory and Analysis Map."
- The Hudson River and Schroon River have highly varied use levels for canoeists, kayakers and tubers. A widely distributed blueway map for both rivers with access points and information on river use would be highly valuable.
- Trout Brook and Chester Brook are outstanding resources for intermittent canoeing and kayaking. The ability to utilize these streams is dependent on the depth of water available at any one time. Depending on weather, these streams can be very hazardous. Potential points of access and the use of Chester Creek for kayak/canoe use, at least in certain sections, should be identified.
- The spread of aquatic invasive species is an issue in all water bodies in the town. Loon Lake has an active program to manage aquatic invasive species. Eurasian watermilfoil is present throughout the lake with a concentration of moderate beds in the vicinity of the boat launch. The Town of Chester launched a mandatory boat inspection program in 2013.

Mountain Peaks Description

There are 22 known mountain peaks in the Town of Chester (see Figure 1, "Draft Inventory of Recreational Resources"). Most of these peaks are on private land however, several have become public with the State's purchase of Finch lands. The parcels known as the Upper Hudson River Lands are discussed in an earlier section of this chapter. Several more do not authorize formal public access but are used anyway. An inventory of the peaks, elevation, and assets can be found in the table below.

Mountain Name	Elevation (feet)	Access Status
Panther Mountain	1,506	Private
Tower Mountain	1,393	Private
Remington Mountain	1,300	Private
LGWF Mountain #1	1,500	Public
LGWF Mountain #2	1,000	Public
LGWF Mountain #3	1,300	Public
LGWF Mountain #4	1,500	Public
McCann Mountain	1,458	Private
Campground Mountain	1,100	Private
Huckleberry Mountain	1,250	Private
Vetter's Mountain	1,400	Private but open & free to the public
Round Top Mountain	1,654	Private
Meade Mountain	1,600	Private
Stewarts Mountain	1,272	Private
Kipp Mountain	1,612	Snowmobile access
Henderson Mountain	2,051	Private
Ethan Mountain	1,902	Private

Bibby Mountain	1,946	Private
Catamount Hill	1,637	Private but open for pay
Ledge Hill	1,750	Private but open for pay
Green Hill	2,123	Private but open for pay
Moxham Mountain	2,418	Public; Ledge rock area is private

Needs and Opportunities

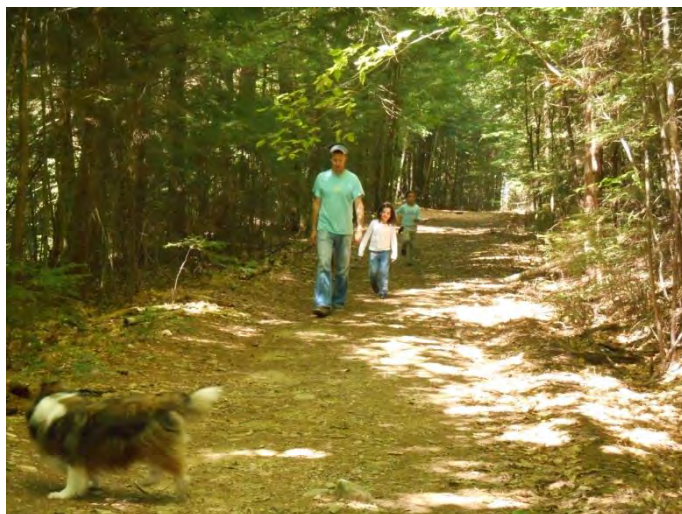
One strategy to enhance the public's interest in trails is to create a continuous trail system that connects Dynamite Hill to a trail network that leads to the 22 mountain peaks throughout the Town. It would be a public hiking and biking network comprised of a network of existing paths, trails, and on-street bicycle routes that connect existing trail hubs and provide connections between recreation sites, community parks, attractions, services, business districts, and land and water access points.



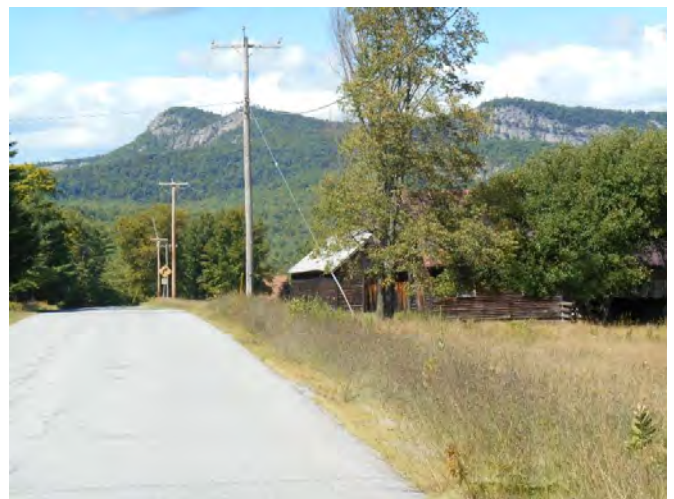
Jenks Swamp



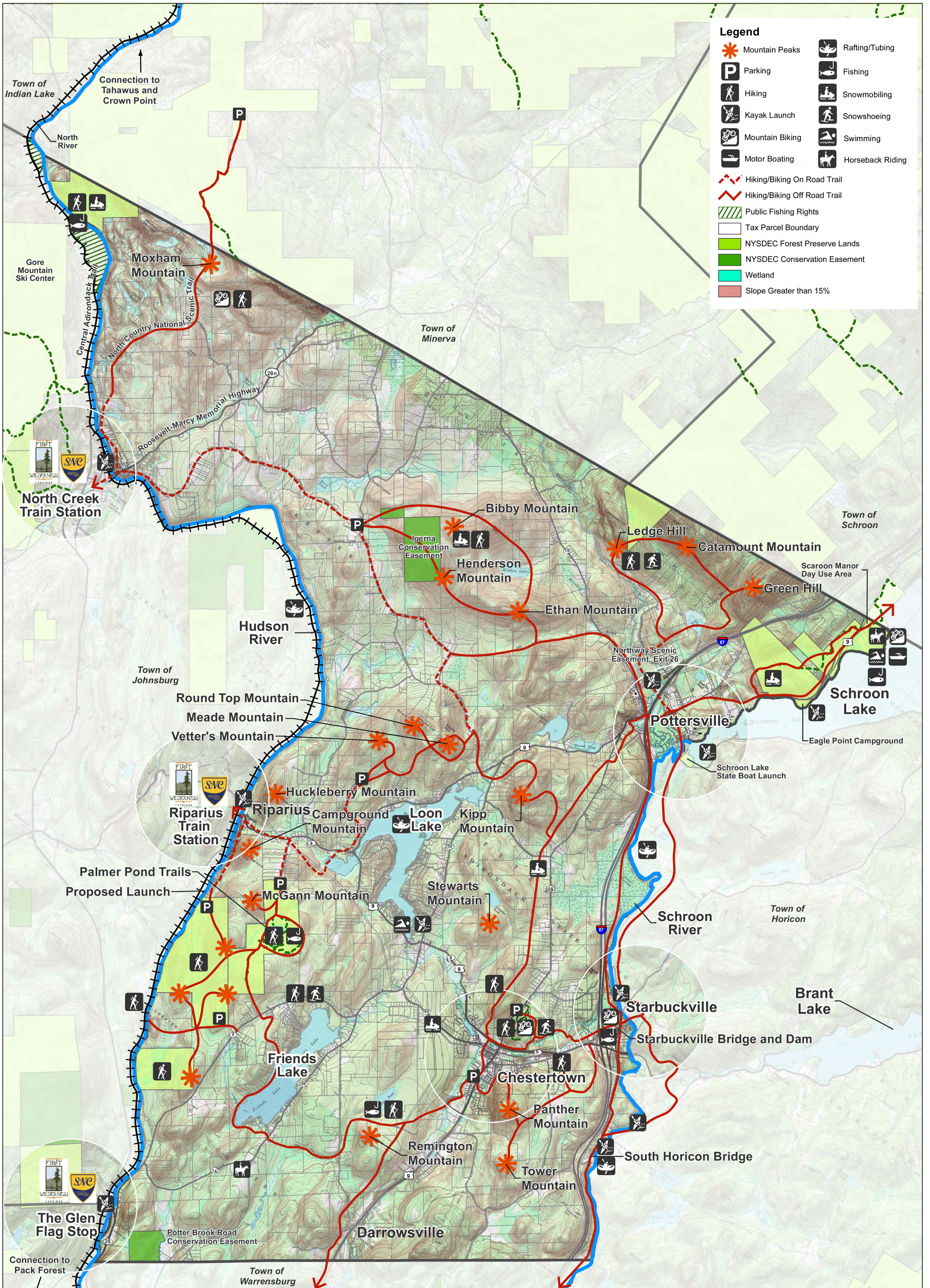
Kipp Mountain



Palmer Pond Trail



Moxham Mountain



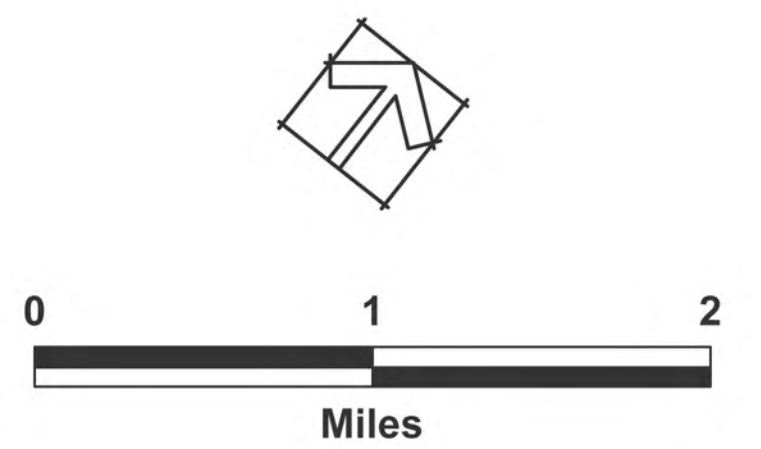
Chester Townwide Recreation Plan

Figure 2: Trail Concepts Map



Project: 201338
Date: 02/06/2015

This project is funded through the New York State Department of State with funds provided under Title 11 of the Environmental Protection Fund.



Chester Municipal Center

The Town of Chester owns a large property on State Route 9. Resources include the Chester Municipal Center, which includes town offices, library and museum; formal open public space for memorials, farmers markets and festivals; and a large natural area of forests and wetlands. Existing recreational resources include 2 basketball courts and 2 tennis/pickle ball courts. Approximately 5 acres located behind the building was retained by the North Warren Central School for playing fields.



Highlights

- Location:** State Route 9
- Length/Area:** 48+ acres
- Signage:** Historic marker
- Types of Uses:**
- Surface:** Concrete and grass
- Condition:** Good
- ADA Accessible:** Yes
- Availability of Restrooms:** Yes
- Parking Availability:** 100
- Amenities Available:** None
- Prohibited Uses:** None
- Special Landmarks:** None
- Unique Natural Features:** Chester Creek
- Scenic Views:** Chester Creek
- Water Access:** None
- Connections to Other Trails:** Chester Creek Trail
- Type of Ownership:** Town and School District

Needs and Opportunities

- Improve basketball court area and add amenities for both young and aging residents.
- Take advantage of the natural wetland and power line/snowmobile trail behind Town Hall.
- Provide indoor space for winter youth activities such as a basketball court and fitness room.
- Funding is available to build a small playground near the playing fields.
- Construct sidewalks down the west side of Main Street to Chester-Horicon Health Center and the east side to Rite Aid drug store.
- Provide a trail connection to the future site of new playing fields on Tannery Pond Road.
- Funds available for kiosk and trail signage.



Dynamite Hill Recreation Area

Dynamite Hill is Chestertown’s centerpiece for year-round family recreation. This site offers an exceptional variety of recreation and resources including: lighted tubing/sledding, downhill skiing, ice skating, x-country skiing, snowshoeing, and ice skating during the winter; and hiking, single-track bicycling, and picnicking during the rest of the year. The trail system is comprised of 2.6 miles of natural path which connects with the *Caroline Fish Memorial Trail* which has 6 miles of novice-intermediate cross country trails that can be accessed off Landon Hill Road. The North Warren Chamber of Commerce also shares space at Dynamite Hill and compliments the site by providing visitors with key information about the region.



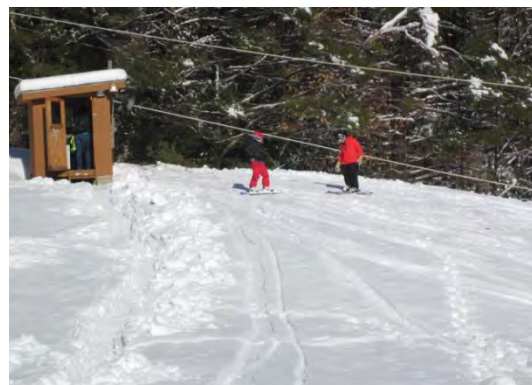
Highlights

- Location:** State Route 8
- Length/Area:** 120 acres/2.6 miles
- Signage:** Information Kiosk & Trailhead
- Surface:** Trails are Natural Surface
- Condition:** Well Maintained
- ADA Accessible:** Building Only
- Availability of Restrooms:** Yes
- Parking Availability:** 60 vehicles
- Amenities Available:** Warming Hut; Snack Bar
- Prohibited Uses:** Motorized Uses
- Special Landmarks:** None
- Unique Natural Features:** None
- Scenic Views:** Yes-
- Water Access:** None
- Connections:** Chester Creek Trail
- Ownership:** Town



Needs and Opportunities

- A playground would encourage visitors off Rt. 8.
- Trails should be expanded for mountain biking.
- A lit cross-country ski trail from the warming hut would encourage winter use of the trails.
- Interpretive signage and geocaching would make it more interesting for families.
- The upper parking lot is a gravel surface. A paved surface would help with winter maintenance and better manage parking.
- Access to the trail from the entry road needs to be more visible.
- Bike racks and benches would make the park more user-friendly.
- The ice rink should be expanded to allow for more users.
- The 1962 rope tow is in poor condition and should be replaced.
- A formalized path to the pedestrian crossing at the SR 8/9 intersection would encourage walking and biking from downtown.



Memorial Park (Future)

The Town owns 22.75 acres that includes the Chester Town Cemetery near Little Tannery Road. Approximately 8 acres of land on the south side of the cemetery has been set aside for recreation to serve residents in this part of the community.

A concept plan developed for the Town Board for this site illustrates a Little League baseball field, regulation soccer field, fitness trail, playground, and parking for 39 vehicles.



Highlights

Location: State Route 9 & Little Tannery Loop
Length/Area: 8 acres
Signage: Historic marker
Surface: Grassy field
Condition: NA
ADA Accessible: None Developed
Availability of Restrooms: None Developed
Parking Availability: None Developed
Amenities Available: None Developed
Prohibited Uses: None Developed
Special Landmarks: Historic Town Cemetery
Unique Natural Features: None
Scenic Views: None
Water Access: None
Connections to Other Trails: Chester Creek Trail
Type of Ownership: Town

Needs and Opportunities

- A need for additional playing fields in the community has been identified by the Recreation Commission.
- The site is low and tends to stay wet for extended periods. A significant amount of fill is required to make the space useable for fields.



Pottersville Town Park

The Town owns this parcel located on Route 19 across from the Word of Life Fellowship. This was a playground once associated with the school that has been repurposed into a recreational area for Town residents. The site has a playground, full basketball court, picnic tables, and an ATV trail.



Highlights

Location: Route 19-Olmsteadville Road
Length/Area: 2.5 acres
Signage: Minimal
Surface: Sand, grass, gravel
Condition: Fair
ADA Accessible: No
Availability of Restrooms: No
Parking Availability: 15 vehicles
Amenities Available: None
Prohibited Uses: None
Special Landmarks: None
Unique Natural Features: None
Scenic Views: None
Water Access: None
Connections to Other Trails: None
Type of Ownership: Town

Needs and Opportunities

- The playground equipment is not in safety compliance and needs to be replaced.
- The basketball courts would be of more value to the community if they were lighted.
- The site is underutilized since many residents and visitors believe it is part of the Word of Life building across the street.
- Signage needs improvement.
- Steep drop off on north side.



Gambles Park

Formerly known as Gambles Beach, Gambles Park more adequately describes the nature of this resource. This area is for passive use. There is a picnic shelter, restrooms and a large grassy area for sitting. The Town owns frontage on Trout Brook and visitors enjoy wading, fly fishing and tubing. Trout Brook winds through Pottersville eventually flowing directly into the Schroon River. The nearest take out is near the State Boat Launch approximately 1.25 mile away.



Highlights

Location: Gambles Beach Road off County Route 19
Length/Area: 2.32 acres
Signage: None
Surface: Grass
Condition: Good
ADA Accessible: Yes
Availability of Restrooms: Yes
Parking Availability: 4 vehicles
Amenities Available: Picnic Pavilion
Prohibited Uses: Swimming
Special Landmarks: None
Unique Natural Features: Trout Brook
Scenic Views: None
Water Access: 520 linear feet
Connections to Other Trails: Trout Brook to Schroon River
Type of Ownership: Town

Needs and Opportunities

- This park is underutilized. There is only a small street sign identifying it as Gambles Beach Road
- The bed of Trout Brook is normally very shallow in this location during the summer season and the gravel bed of the stream does not always lend itself to the launching and movement of canoes and kayaks.
- No life guard is provided. Water is now too shallow in this location for swimming.



Loon Lake Park

This pocket park is located in the southwestern corner of Loon Lake. The small dock is for fishing or dropping off people by boat. Launching for non-motorized boats is not permitted at this site due to the mandatory requirement that all boats be inspected and launched only through the Town Boat Launch.



Highlights

Location: State Routes 8 and 9
Length/Area: 0.2 acre
Signage: None
Surface: Grass
Condition: Good
ADA Accessible: Yes
Availability of Restrooms: No
Parking Availability: 2 vehicles
Amenities Available: Picnic Tables & Grill
Prohibited Uses: Launching
Special Landmarks: None
Unique Natural Features: None
Scenic Views: None
Water Access: Small Dock
Connections: Loon Lake
Type of Ownership: NYSDOT

Needs and Opportunities

- Signage is needed to re-direct car top boats to the boat launch where they have to undergo mandatory inspection.
- Parking needs to be better defined.



Loon Lake Town Beach and Boat Launch

The public beach at Loon Lake is located in the southeastern corner of the lake adjacent to the dam that releases water into the Chester Creek. There are a number of existing amenities on the site and the installation of a picnic pavilion is budgeted for 2015.

This boat launch is located on the east side of the dam just east of the Town Beach. All boats launching in Loon Lake are subject to mandatory inspection for aquatic invasive species. All boats that do not meet the standard of Clean-Drain-Dry are required to be washed. A boat wash station with an inspector is stationed at the site throughout the boating season.



Highlights

- Location:** State Route 8
- Length/Area:** 6.45 acres
- Signage:** Yes
- Surface:** Sand Beach/Gravel Parking
- Condition:** Very Good
- ADA Accessible:** Yes
- Availability of Restrooms:** Yes
- Parking Availability:** 20 vehicles
- Amenities Available:** Small Playground
- Prohibited Uses:** Open Dawn to Dusk
- Special Landmarks:** Dam
- Unique Natural Features:** Loon Lake
- Scenic Views:** Yes
- Water Access:** Yes
- Connections to Other Trails:** None
- Type of Ownership:** Loon Lake Park District/Town

Needs and Opportunities

- State Route 8 is an unsafe crossing for pedestrians coming from the campground across the street.
- Because there is no buffer between the Route 8 and the park, it can be noisy and unsafe for children.
- Non-motorized boats are also required to launch here and undergo a mandatory inspection for invasive species. The lack of a dedicated space for launching kayaks and canoes makes it difficult for them to launch at this site.



Riparius Pocket Park

This pocket park offers a bench to quietly enjoy the Hudson River. A sidewalk over the bridge leads to a parking lot and picnic table with a view of and direct access to the Riparius Train Station.



Highlights

Location: State Route 8 & East Hudson River Road
Length/Area: 0.1 acres
Signage: Historic marker
Surface: Concrete
Condition: Excellent
ADA Accessible: Yes
Availability of Restrooms: No
Parking Availability: 2 vehicles
Amenities Available: Bench
Prohibited Uses: None Developed
Special Landmarks: Historic Riparius Train Station
Unique Natural Features: Hudson River
Scenic Views: North and South
Water Access: Southwest side of Riparius Bridge
Connections to Other Trails: First Wilderness Heritage Trail
Type of Ownership: State of New York

Needs and Opportunities

- There is a lack of signage to orient visitors about the connection between Chestertown and Saratoga-North Creek Railway.
- Undefined parking area.



Starbuckville Dam

This gravity dam controls the water level of Schroon Lake. It is owned by Schroon Lake Park District, a tax district of 2,250 properties with an appointed board with representatives from the towns of Chester, Horicon and Schroon. It is 13 feet high and 220 feet long. A fish ladder provides a 4.3-foot elevation lift allowing the upstream migration of trout and salmon into Schroon Lake. A stepped spillway reduces water turbulence below the dam and makes it safer for fishing and boating in the river. The site is a popular fishing spot as well as a place to simply watch the water and have a picnic.



Highlights

Location: County Route 64/Schroon River Road
Length/Area: 6.57 acres total; 2.5 waterside
Signage: None
Surface: Pavement
Condition: Fair
ADA Accessible: No
Availability of Restrooms: No
Parking Availability: 6 vehicles
Amenities Available: Picnic Table
Prohibited Uses: None Posted
Special Landmarks: Starbuckville Dam
Unique Natural Features: Schroon River
Scenic Views: Numerous
Water Access: North of Dam
Connections to Other Trails: Snowmobile Trail
Type of Ownership: Schroon Lake Park District

Needs and Opportunities

- There are safety and accessibility issues related to fishing from the dam
- There is no identification of what the site is and what it can be used for.
- The site has the potential as a gathering point for bicycle groups and families looking for flat, scenic riding routes.



School Parks and Lands: North Warren Central School

North Warren School District resources that are available to the public include a fenced-in playground, sports fields, tennis courts, basketball courts, nature trail, and community garden. The School District also owns the playing fields just west and adjacent to the Chester Municipal Center.



Highlights

Location: State Route 8
Length/Area: 105.5 acres
Signage: None
Surface: Natural
Condition: Poor
ADA Accessible: No
Availability of Restrooms: No
Parking Availability: 75 vehicles
Amenities Available: Community Garden
Prohibited Uses: Unknown
Special Landmarks: None
Unique Natural Features: Wooded Areas
Scenic Views: None
Water Access: None
Connections to Other Trails: Crossing to Dynamite Hill Recreation Area
Type of Ownership: North Warren School District

Needs and Opportunities

- The Nature Trail behind the school is not well maintained. It has the potential to serve as a community walking area as well as link into the Panther Mountain trail system.
- There is no parking near the playground which is likely a deterrent for families.
- There is no safe off-road running route to Dynamite Hill for the cross-country team.



State Parks and Lands: Eagle Point Campground

Eagle Point, located on the western shoreline of Schroon Lake, is a state-owned campground with opportunities for day use and overnight tent or RV camping. The one-mile of shoreline is mostly rocky. Portions that are sandy are dedicated to a public bathing beach and an informal area for the launching of boats. This site is classified as Intensive Use under the State Land Classification System.



Highlights

Location: State Route 9
Length/Area: 305.5 acres
Signage: Minimal Aquatic Invasive Species
Surface: Pavement, Sand and Gravel
Condition: Good
ADA Accessible: No
Availability of Restrooms: Yes
Parking Availability: 80 vehicles
Amenities Available: 72 camp sites; Picnic Area
Prohibited Uses: None
Special Landmarks: None
Unique Natural Features: Schroon Lake
Scenic Views: Numerous
Water Access: Schroon Lake
Connections to Other Trails: None
Type of Ownership: State of New York



Needs and Opportunities

- There is good opportunity for walking and biking throughout the park however they are along roads shared with vehicles.
- The north end of the park is conducive for linking to the Route 9 shoulder.
- The south end is steep and would take more effort to make the Route



Scaroon Manor Day Use Area

This facility is located on Schroon Lake along the northern boundary of the Town of Chester. Prior to acquisition by New York State in 1967, the site was a private resort of the wealthy and offered a broad range of facilities and activities which included golf, swimming, canoeing, boating, sailing, water skiing, bowling, handball, baseball, basketball, tennis, hiking, hunting, fishing, horseback riding and roller skating. Informational panels describing the history of the site are located in kiosks throughout the campground. This site is classified as Intensive Use under the State Land Classification System.

The facility has 60 tent and RV campsites, beach, 18 rental dock slips, fishing pier, cartop boat launch, and picnic shelter. The network of roads also serves as active walking and biking trails for visitors. There is a separate network of footpaths in the northern portion of Scaroon Manor that connect to the Cayuga Primitive Camping Area which has been developed as a rustic campground with picnic tables, fire rings, tent sites, and potable water.



Highlights

- Location:** State Route 9
- Length/Area:** 299 acres
- Signage:** Historic markers
- Surface:** Paved Roads; Natural Surface Trails
- Condition:** Excellent
- ADA Accessible:** Yes, Universal Design Facility
- Availability of Restrooms:** Yes
- Parking Availability:** 50+ vehicles
- Amenities Available:** Boat Docks, pavilions; dog beach
- Prohibited Uses:** Non Known
- Special Landmarks:** Historic Scaroon Manor Resort
- Unique Natural Features:** Schroon Lake
- Scenic Views:** Numerous
- Water Access:** 1,200 feet of shoreline
- Connections to Other Trails:** None
- Type of Ownership:** State of New York

Needs and Opportunities

- The inner roads are not safe for walking and biking during the season.
- The north and south end of the site is conducive for linking to the State Route 9 north shoulder for pedestrians and bicyclists.
- Scaroon Manor and Eagle Point are separated from each other by two privately owned parcels which have the potential to provide additional family-based recreation opportunities, including hiking and bicycling.



Palmer Pond Trails

The Palmer Pond Trail is located on state land that is part of the Lake George Wild Forest. The site is comprised of a trail system and 31-acre Palmer Pond which is managed as a coldwater fishery with native and introduced trout species. Access to the trailhead is at the end of Palmer Pond Road, off state Route 8. Palmer Pond Road is 1 mile east of the Hudson River at Riparius and 1 mile west of the intersection of state Route 8 and Route 9, west of Chestertown. A parking area is available at the barrier gate at 0.8 miles where Palmer Pond Road transitions into the trail. The trail itself is appropriate for a light hiking experience with opportunities to view wildlife or go fishing. There are a number of scenic vistas throughout the site, especially along some of the trail spurs on either side of Palmer Pond. Handicap access is available upon notice into the site.



Highlights

Location: Palmer Pond Road off State Route 8

Length/Area: 1.5 mile trail; 342 acres

Signage: Minimal

Surface: Natural

Condition: Fair

ADA Accessible: Upon DEC request; rustic access

Availability of Restrooms: No

Parking Availability: 5 vehicles

Amenities Available: No

Prohibited Uses: No motorized vehicles

Special Landmarks: None

Unique Natural Features: Palmer Pond

Scenic Views: None

Water Access: Yes - rustic conditions

Connections to Other Trails: Informal to Friends

Lake Inn and adjacent state lands

Type of Ownership: State of New York

Needs and Opportunities

- The present trail ends at the boundary of a private property. There is the opportunity to extend the trail and loop back into the existing trail system on public land.
- Handicapped access into the site is permitted through access by a dirt road. Permission must be sought through NYSDEC who unlock the gate. While this option is available, the entire site is primitive and minimally maintained.



Hudson Riverside and Ice Meadows State Land Parcels

This parcel was recently sold to the state to be incorporated into the Lake George Wild Forest. These lands include 1.5 miles of the Hudson River shoreline and have a direct link to the Palmer Pond state lands. The State will revise the Draft Lake George Wild Forest Unit Management Plan to include this area after the Adirondack Park Agency makes a determination as to its state land use classification. The portion of this land along the Hudson River is part of the Ice meadow community, providing habitat for eight rare plant species and one of the few natural grasslands in the state. The upper elevations contain several trails going north-south and one east going towards Palmer Pond. There are two deeded ROWs that came with the property- one from Palmer Pond and one from Friends Lake Road. An additional easement is from East Hudson River Road.

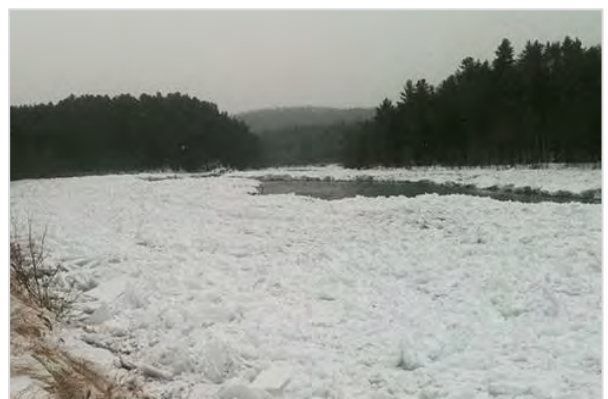


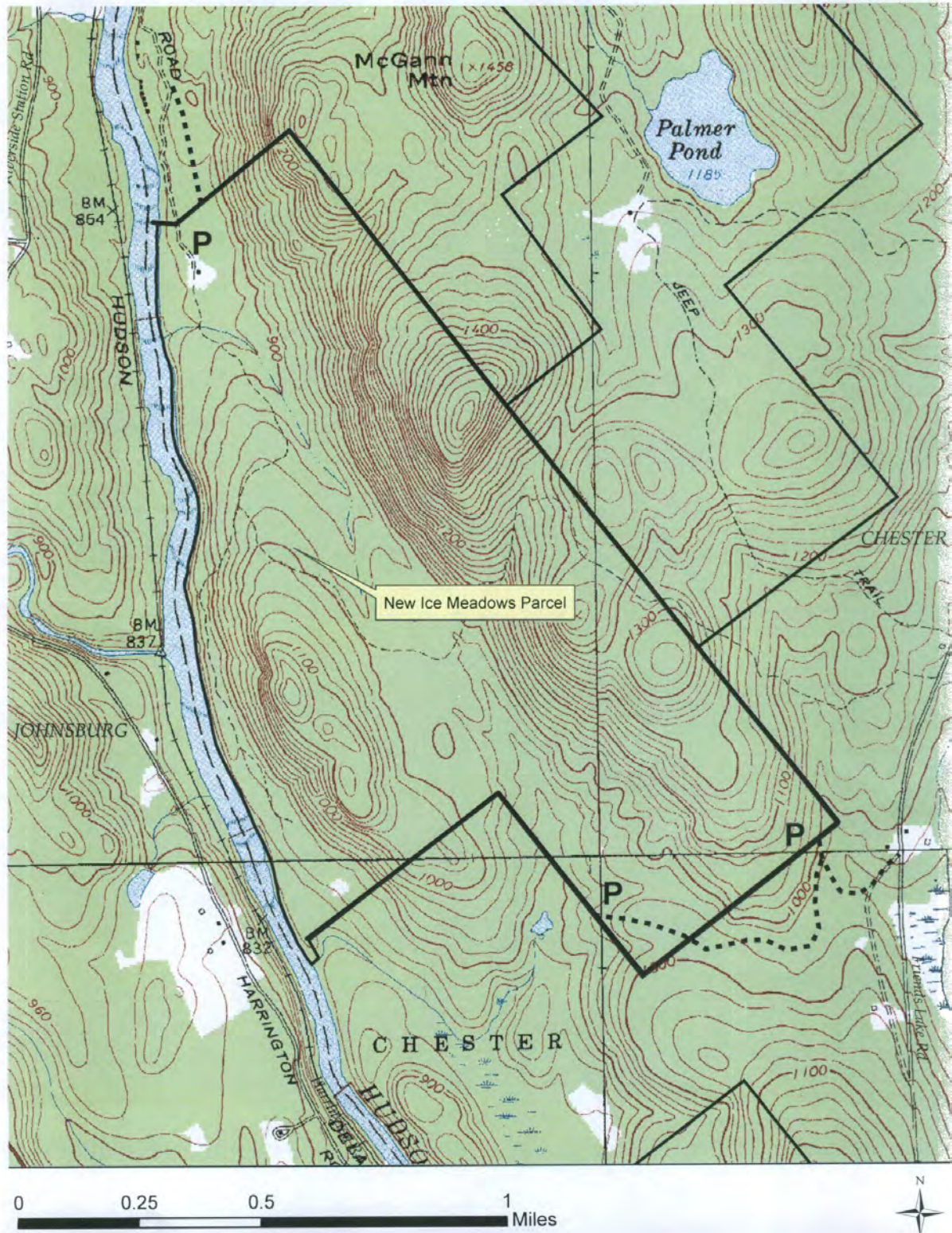
Highlights

- Location:** South End of East Hudson River Road
- Length/Area:** 760 acres
- Signage:** None
- Surface:** Logging roads throughout
- Condition:**
- ADA Accessible:** No
- Availability of Restrooms:** No
- Parking Availability:** None
- Amenities Available:** None
- Prohibited Uses:** None Developed
- Special Landmarks:** None
- Unique Natural Features:** None
- Scenic Views:** Good views from mountain peaks
- Water Access:** None developed
- Connections to Other Trails:** First Wilderness Heritage Trail
- Type of Ownership:** State of New York

Needs and Opportunities

- Old logging roads crisscross the land and can provide the outline for a trail system.
- Connections to the Palmer Pond trail system would provide a more extensive trail system with varied levels of hiking and terrain.
- A connection could be made between North Creek Train Station and these parcels via the Riparius Bridge and East Hudson River Drive to the point of public access.
- Fragile plant life along the Hudson River will need to be protected.
- Private property needs to be respected by posting appropriate signage.





New Ice Meadows Parcel of Lake George Wild Forest (NYSDEC)

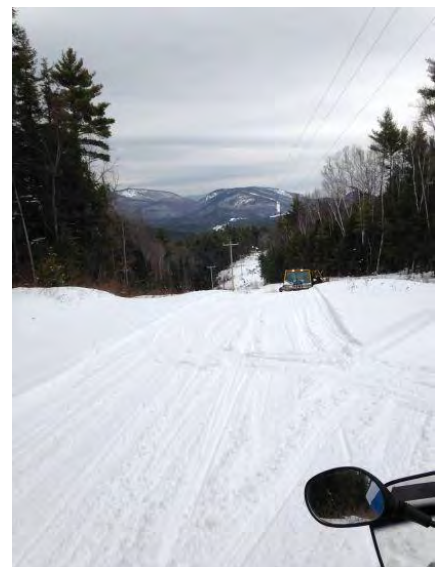
Snowmobile Trail Network

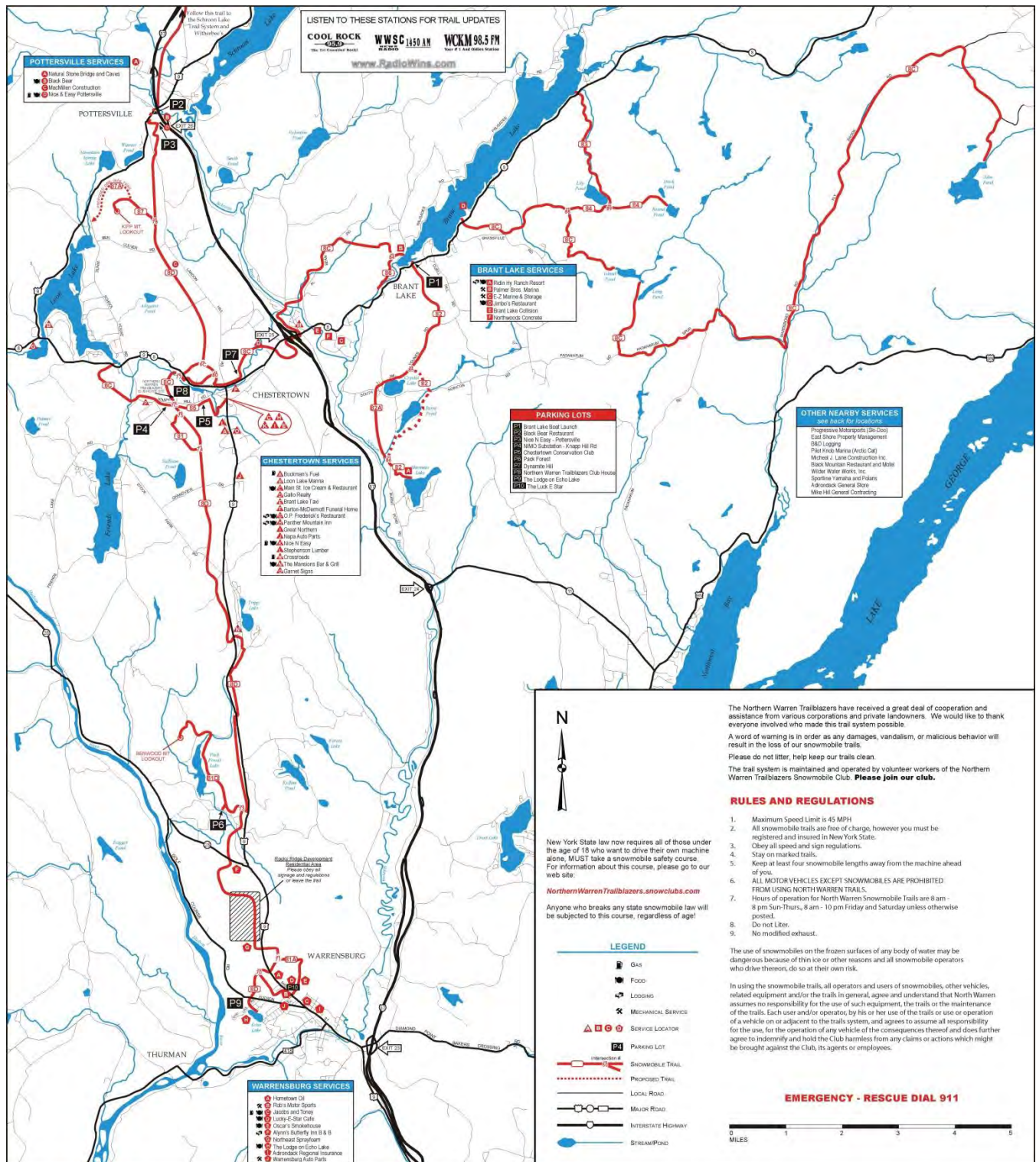
The snowmobile trail network in Chester consists primarily of a north-south trail under the National Grid power line along the west side of Route 9 from Warrensburg to Pottersville. The North Warren Trailblazers snowmobile club developed this formal trail system and they maintain more than 80 miles of groomed trails. Side trail loops of this system include destinations to Loon Lake, Brant Lake. Regional connections are available to the Lake George region, and into Essex County and the Adirondack Mountains.



Needs and Opportunities

- The snowmobile trail terminates in Pottersville where there is presently no safe way to continue north into the Schroon Lake Trail system.
- A route north into Minerva is needed to connect to the greater Adirondack snowmobile network at Newcomb. Such a link would boost snowmobile use in Chestertown.
- The Vanderwhacker Mountain Wild Forest lands west of Scaroon Manor have multiple opportunities for the establishment of a network of trails appropriate for hiking and mountain hiking during the summer months and





North Warren Trailblazers Snowmobile Club 2015 Trail Map

Pedestrian and Bicycle Network

Bicycle facilities in Warren County consist of on-road designated routes and multiuse trail systems. The Warren County Bikeway is the primary off-road bike facility which extends 16 miles from the City of Glens Falls to the Village of Lake George. This paved trail is the critical link to other bike networks to the south and provides the potential to continue a north-south dedicated bike path through the Town of Chester and beyond to the Schroon Lake bike network.

The Warren County Safe and Quality Bicycle Organization promotes bicycling throughout Warren County. One of their concentrations is on establishing safe road routes, recommending or making road and signage improvements, establishing and developing mountain bike trails, and establishing multi-use trail interconnections. WCS&QBO is actively working with state, county, and local governments, other bicycling groups, residents, and visitors. WCS&QBO established one main bicycle route through Chestertown and several loops that go into other towns. The Three Lakes Ride is a 33 mile tour along the shores of Brant Lake, Loon Lake and Schroon Lake through the hamlets of Brant Lake, Starbuckville, Chestertown, Pottersville, and Adirondack. Several resources were utilized to assess the conditions and needs of pedestrians and bicyclists in Chester. The Town completed a Healthy Community Mapping Project sponsored by the Creating Healthy Places to Live, Work & Play (CHP2LWP) program of Glens Falls Hospital in 2014. A Public Places Audit was used to assess how well the pedestrian environment connects destinations in the Hamlet of Chestertown along Main Street, Theriot Avenue, and Panther Mountain Road. A full description of the Public Places Audit can be found in Appendix F.

To complement the Healthy Community Mapping Project, a transportation assessment of the County Route 8 Corridor, State Route 9/Main Street Corridor and State Route 9/County Route 8 at the Loon Lake Town Beach was completed as part of the Townwide Recreation Plan. The transportation assessment complements the Town's adopted Complete Streets Policy and is intended to strengthen the findings in the Townwide Recreation Plan. The complete Transportation Memo can be found in Appendix B.

The following areas were identified through committee discussion, public input and field visits as needing pedestrian and bicycle improvements:

- The introduction of pedestrian amenities and improvements will generally create a safer pedestrian and bicycle environment. The Town of Chester adopted a Complete Streets policy on February 12, 2013. Complete Streets are streets that provide safe, comfortable and convenient access for users of all abilities and all modes including pedestrians, bicyclists, motorists and transit riders.
- The Warren County Bikeway provides an opportunity to continue a north-south dedicated bike path through the Town of Chester.
- The WCS&QBO provides support and resources to make improvements to the cycling network.
- State Route 8 corridor from the Route 9 intersection east to Dynamite Hill Recreation Center and the North Warren Central School District (NWCS).
- State Route 9/Main Street Corridor. The focus area of the Route 9/Main Street corridor is approximately 0.8 miles, beginning at the Route 8 intersection moving south to the Hudson Headwaters Health Facility.
- State Route 9/ County Route 8 at the pedestrian crossing at the Loon Lake Town Beach.



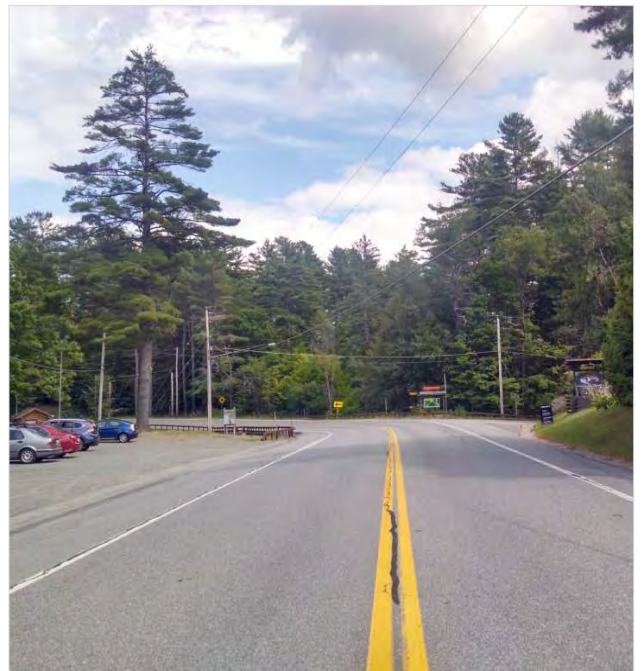
Route 8 Shoulder near Dynamite Hill Recreation Area



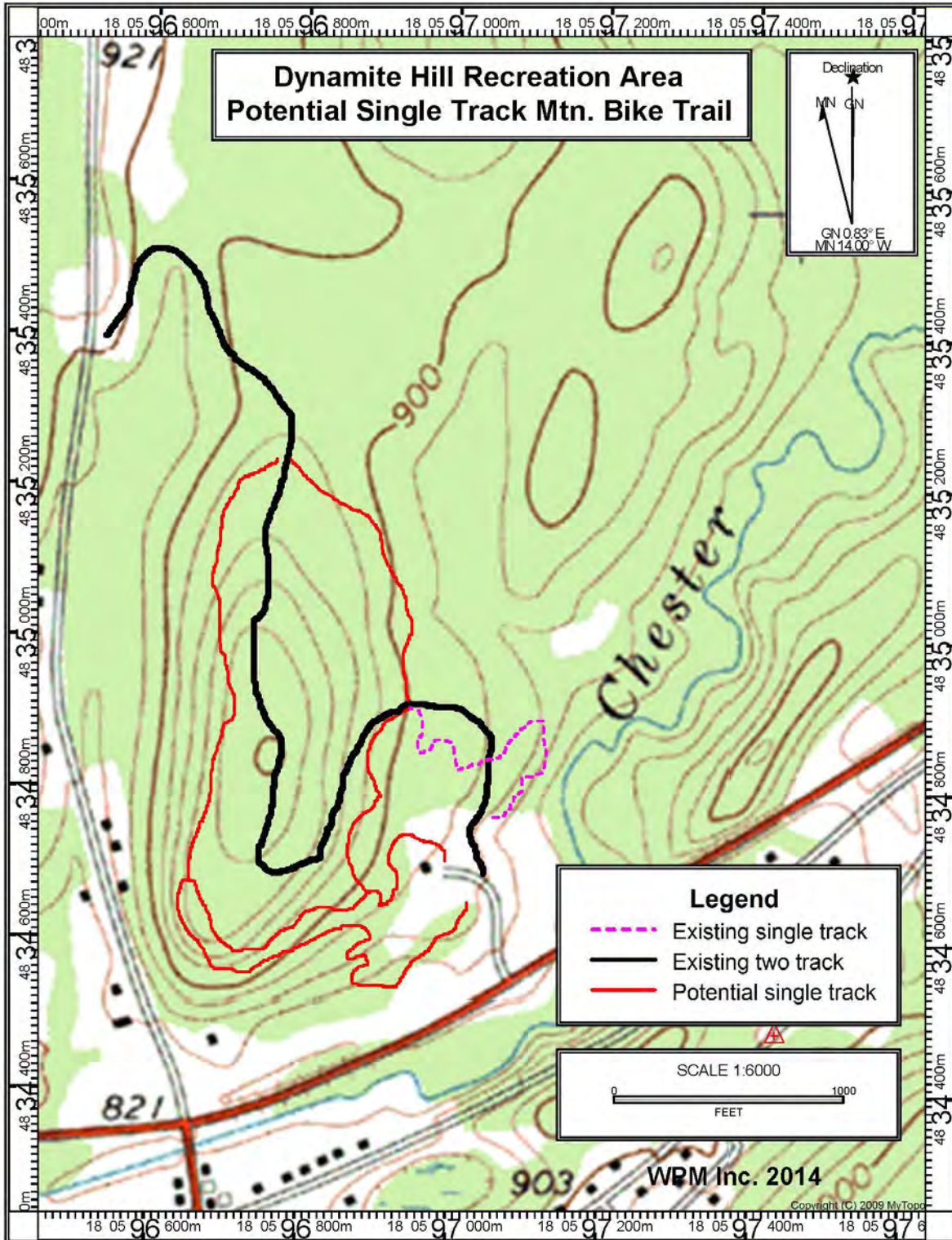
Path near Dynamite Hill Recreation Area



Bicyclists on Rough Shoulder of Route 8



Route 8 Crossing at Loon Lake Town Beach



Proposed Concept for Extended Mountain Bike Trail at Dynamite Hill Recreation Area (Steve Ovitt 2014)

Chapter Four: Recommended Projects and Implementation

Overview

The vision for the recreation plan is to create the planning foundation for quality recreational destinations that is linked to the greatest extent possible by public trails. The intent is also to grow the Town as a destination for recreation by increasing the opportunities for mountain climbing for all abilities, enhancing the interface between land and water use, and building a relationship between the scenic train and Chestertown. The Advisory Committee carefully considered the ideas garnered during the public participation process and understood the call to get some aspects of the project underway for 2015.

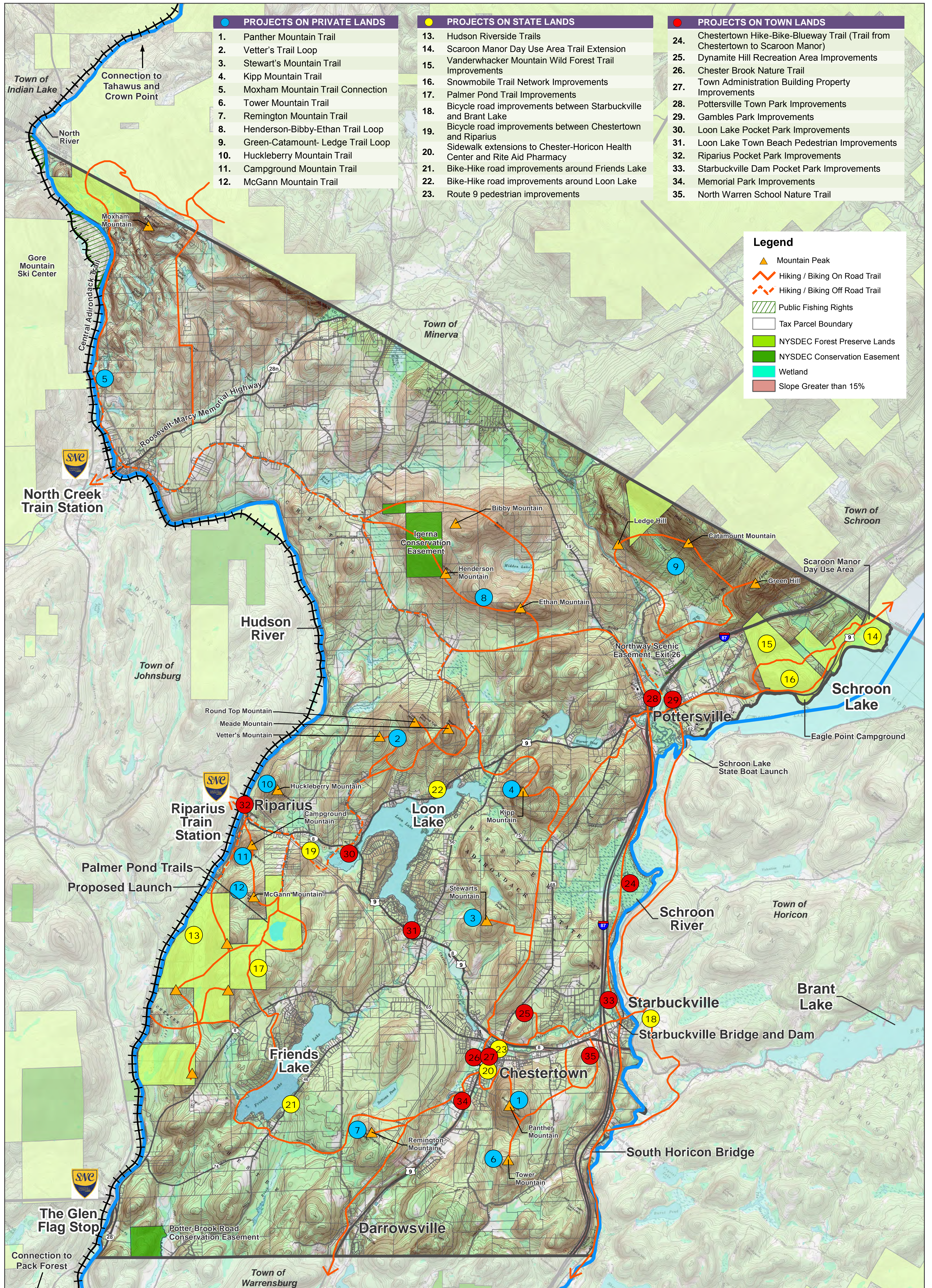
To set priorities, the Advisory Committee organized the recommended projects by utilizing a set of criteria linked to the feasibility of implementation. The criteria used to rank projects included:

- Project readiness
- Potential for volunteer contribution
- Demonstrated need
- Core values
- Population served
- Safety concerns
- Development constraints
- Project connections
- Collaborative opportunity
- Revenue potential
- Level of community support
- Potential for funding assistance

The Town is enthusiastic about getting started immediately implementing the recommendations in the plan. Therefore, project readiness and the potential to complete a project with community volunteers were stated as the most important criteria.

Costs for the implementation of the Recreation Plan fall into three categories. Administrative costs, capital costs (labor and materials) and maintenance costs. Administrative costs are those costs associated with the Town's efforts to manage and oversee the implementation of the Recreation Plan. Capital costs reflect the costs incurred in completing specific projects. Projects such as these are generally funded through state or federal grants, many of which require partial matching either in dollars or in-kind services. Possible sources for these grants are identified in the Project Implementation Chart at the end of this chapter. Potential grant resources are detailed in Appendix H.

The Draft Projects Map on the following page indicates the location of the recommended projects.



Chester Townwide Recreation Plan

Figure 3: Projects Map

Recommended Projects

Projects 1-12 Townwide Public Trail System

Develop an all-season public trail system that utilizes existing trails, paths, logging roads, low volume roads, snowmobile trails and other means. This trail system will seek to provide connections between mountain peaks, individual trail preserves, parks, waterways and state land areas. Conservation easements or other means will be sought for trails that are on private land or in areas that are not presently open to the public. Permission will be sought from National Grid for use the off-winter use of the power line corridors that presently have agreements with the Northern Warren Trailblazers snowmobile club. The trail system will also seek to provide the visitor various levels of difficulty and types of terrain. The Draft *Trails Concepts Map* illustrates how the trail resources would be linked as a continuous system of trails. The following narrative outlines the mountain peaks with the highest potential for trail development and the actions required to locate a trail system. There are five trails that have the potential to be up and operational by 2015. These include: Panther Mountain, Vetter’s Mountain, Kip Mountain, Stewarts Mountain and Moxham Mountain. Specific mountain access and trail improvements are as follows:

1. Panther Mountain Trail (highest priority)

The highest priority for increasing public hiking opportunities is Panther Mountain. This is due to its proximity to the Chestertown business district, its familiarity among the public, an existing network of trails on the mountain, and willing property owners. There are three potential routes to the peak, all of which are on private land. All three would be useful since two of the trails could create two access points. A second trail off a driveway and cell phone tower off Starbuck Hill Road could serve as handicap access to the view point. This section would need only minor improvements and a way to limit access to only those who cannot walk the trail from the regular trailhead points. A parking lot and trailhead would be established at the end of Panther Mountain Drive Extension. The trail would conceivably proceed past the historic water tower and loop around to the top where there is an expansive view of Gore Mountain. An alternate trail would be developed from the end of Spring Street off Theriot Avenue or directly off Theriot Avenue. GPS waypoints have been established for these trails.

Action Needed	Responsible Party	Estimated Cost
Obtain public access easements	Town of Chester	Variable but minimal
Construct Trails	Town with volunteers	Minimal
Install trail markers and signage	Town with volunteers	Minimal
Connect trail to Tower Mountain	Town with volunteers	Variable but minimal

2. Vetter’s Trail Loop (Vetter’s Mountain, Round Top Mountain and Meade Mountain) (highest priority)

The Vetter’s Mountain parcel is known as Bonnie Belle Farm. It is owned by the Vetter family that developed a system of trails and dedicated them for public use. The family has expressed interest in establishing a formal trail easement with the Town. A system of logging roads exists throughout the Vetter property that has the capacity to connect to nearby Round Top Mountain and Meade Mountain. Views of Gore Mountain are available from the top. Permission will have to be sought from Frances Beckman for access to his land which is immediately adjacent to the Vetter parcel.

Action Needed	Responsible Party	Estimated Cost
Obtain public access easements	Town of Chester	Variable but minimal
Improve existing trails	Town with Volunteers	Minimal for trail markers and signage
Provide trail connections between three mountains	Town with Volunteers	Minimal for trail markers and signage

3. Stewart’s Mountain Trail (highest priority)

Private landowners have been approached and are affirmative in their interest to establish an easement to permit the public to utilize their property for access. There is currently a trail that is utilized by those with permission.

Action Needed	Responsible Party	Estimated Cost
Obtain public access easements	Town of Chester	Variable but minimal
Construct Trail	Town with Volunteers	Minimal for trail markers and signage

4. Kipp Mountain Trail (highest priority)

Obtain public access easements and construct trail to peak. There is an existing snowmobile trail off the power ROW that descends down to Schoolhouse Road on the east side of Loon Lake.

Action Needed	Responsible Party	Estimated Cost
Obtain Public Access Easements	Town of Chester	Variable but minimal
Construct Trail	Town with Volunteers	Minimal for trail markers and signage

5. Moxham Mountain Trail Connector (highest priority)

Moxham Mountain is an outstanding mostly state-owned resource that straddles the border with the Town of Minerva. The existing DEC trail originates from the Town of Minerva and ends at the mountain's peak in the Town of Chester. It has been built to accommodate four-season use. The decent along the rock face and side is owned by a single landowner. There is an opportunity to develop a continuous trail from North Creek across the bridge, north up Old River Road, and across private lands to meet the existing trail section at the top of Moxham Mountain. This section of trail would be part of the new North Country National Scenic Trail which is likely to be routed along Old River Road.

Action Needed	Responsible Party	Estimated Cost
Obtain public access easements	Town of Chester	To be determined
Construct trail	Town with Volunteers	Minimal for trail markers and signage
Wayfinding Signage	Town of Chester	\$1,500 North Country National Scenic Trail

6. Tower Mountain Trail

Tower Mountain is a private peak south and within walking distance of Panther Mountain. A trail that would provide a longer and more challenging hike would be established linking the two peaks.

Action Needed	Responsible Party	Estimated Cost
Obtain public access easements	Town of Chester	Variable but minimal
Construct trail to peak	Town with volunteers	\$3,000 Trail construction, markers and signage

7. Remington Mountain Trail

Remington Mountain is located just north of Stock Farm Road and south of Sullivan Pond. Many logging and other trails appear to exist in this area making it an optimal for public hiking. In addition, the north-south National Grid power corridor is located nearby which would provide the trail link into the Chestertown business district. A nearby parcel is presently for sale and may become available to the public for hiking and fishing at some point in the future. The Sullivan Pond parcel is an outstanding natural resource consisting of mostly wooded 341-acres located just southwest of the Chester Municipal Center and east of Friends Lake. It is currently privately-owned and for sale. Access is from Ferris Road. These lands have the potential as a community forest and recreation area suitable for hunting, fishing, hiking, and canoeing. Options for acquiring the land are to receive it as a gift, create a public-private partnership to purchase and maintain the lands, or purchase conservation easements through the Town or some other entity.

Action Needed	Responsible Party	Estimated Cost
Obtain public access easements	Town of Chester	Variable but minimal
Construct Trail	Town with Volunteers	Minimal for trail markers and signage
Connect Trail to National Grid corridor	Town with Volunteers	Minimal due to existing roads/trails
Purchase the Sullivan Pond Parcel	Town with Volunteers	\$250,000

8. Henderson-Bibby-Ethan Trail Loop

These three mountains are clustered on private land near the northern border with the Town of Schroon. There appears to be many existing trails throughout these lands. Access is potentially available from Byrne's Corners off Igerna Road in the south and from Hidden Lake in the north. There are known property owners willing to provide trail easements.

Action Needed	Responsible Party	Estimated Cost
Obtain public access easements	Town of Chester	Variable but minimal
Construct Trails	Town with Volunteers	Minimal for trail markers and signage
Link all trails with connectors	Town with Volunteers	To be determined

9. Green-Catamount-Ledge Trail Loop

These three peaks are located on lands within privately owned Natural Stone Bridge and Caves. There are exceptional views along these ridges that overlook Schroon Lake and the Adirondack Mountains. Public access by pay is available through Natural Stone Bridge and Caves. Guided hikes by foot and snowshoe are also available.

Action Needed	Responsible Party	Estimated Cost
Establish public paid and guided use of trails to peaks.	Natural Stone Caves	Variable

10. Huckleberry Mountain Trail

Huckleberry Mountain is located just north of Riparius on Route 8 and has views of the Hudson River and mountains to the west. Preferred access would be available from Moffitt Road off Vanderwalker Road.

Action Needed	Responsible Party	Estimated Cost
Obtain public access easements	Town of Chester	Variable but minimal
Construct trail	Town with Volunteers	Minimal for trail markers and signage
Connect trail to Tower Mountain	Town with Volunteers	To be determined

11. Campground Mountain Trail

Campground Mountain is on private land located just south of Route 8 at Riparius. There appears to be an existing trail off E. Hudson River Drive and possibly from Route 8. Other trail access could be established from the Palmer Pond trail system.

Action Needed	Responsible Party	Estimated Cost
Obtain public access easements	Town of Chester	Variable but minimal
Construct or improve existing trails	Town with Volunteers	Minimal for trail markers and signage

12. McGann Mountain Trail

This peak appears to have access through an existing trail on state lands at Palmer Pond. Some of the mountain appears to be on private land therefore permission for public access will have to be sought or signage posted to illustrate where the state land ends.

Action Needed	Responsible Party	Estimated Cost
Obtain public access easements	Town of Chester	Variable but minimal
Construct trail	Town with Volunteers	Minimal for trail markers and signage
Provide connect trail to Tower Mountain	Town with Volunteers	To be determined

13. Hudson Riverside Trails

There are four peak scattered along a ridge on several parcels in the Lake George Wild Forest along the Hudson River. There are many logging roads throughout these two parcels and there is an opportunity to link them via a network of trails with multiple points of public access. Public access has been established at the end of East Hudson River Drive and through state lands associated with Palmer Pond. The Hudson Riverside Parcel is a recent acquisition that lies adjacent to the Palmer Pond parcel. The Ice meadows parcel is just south with one private owner between. The existing system of logging roads will provide a foundation for an extensive trail network leading to four main mountain peaks. These lands are linked to the trails at Palmer Pond and have the capacity to accommodate many levels of hiking ability. Specific recommendations include:

- a. Construct interconnected hiking trails to three peaks on these new public lands.
- b. Establish trailheads, parking areas, kayak access and signage, camp sites and interconnected trail system for hikers and mountain biking to Palmer Pond and access to Hudson River.
- c. Recommend trailheads utilizing existing old logging trails as part of a trail system and deeded right-of-ways and easements for public access.
- d. Develop minimal but adequate signage and sign-ins at trailheads.
- e. Connect trails to Palmer Pond trail system.
- f. Establish trailheads, parking areas, kayak access and signage, camp sites and access to Hudson River.
- g. Construct interconnected hiking trails to three peaks on these new public lands.
- h. Develop interpretive program for the Ice Meadows.

Action Needed	Responsible Party	Estimated Cost
Develop interconnected trail system with signage	NYSDEC with Town representatives	\$5,000
Work with DEC to establish a marked trail system	NYSDEC with Town representatives	Minimal for trail markers and signage
Improve existing trails	NYSDEC with volunteers	\$ 10,000

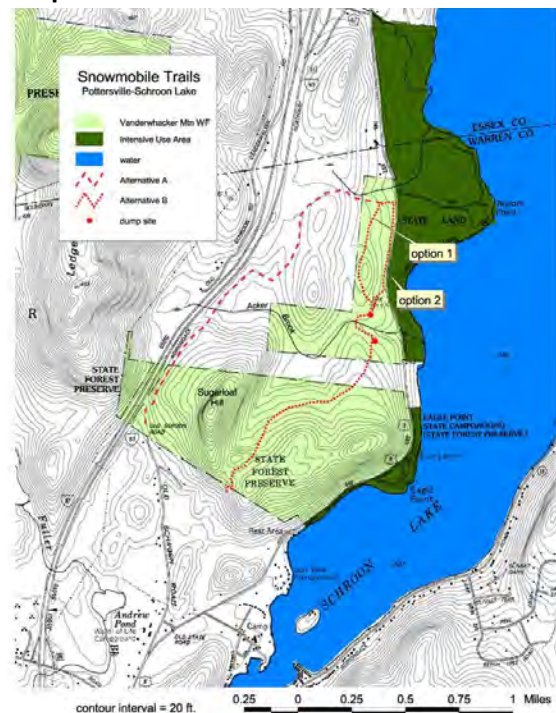
Project 14 Scaroon Manor Day Use Area Trail Extension

These public lands are reserved for intensive uses such as camping and boating. There is an existing trail system that begins in the northern end of the site, winds around the waterfront and into the open space next to the waterfront. The remainder of the site has paved roads that weave through it giving access to the camping and RV areas. These roads are frequented by families with young children walking and riding bikes. This can create traffic conflicts and issues with safety during the summer months. A dedicated paved trail for universally-accessible walking and biking throughout the campground portion of the site should be developed. To the south, Eagle Point Campground also has shared use roads for pedestrian access. A trail entrance from the northern end at Route 9 would be feasible. A trail outlet at the south end would be difficult due to extremely grade changes. Therefore, it would more feasible to continue the trail in the state right-of-way off Route 9 while accommodating a pedestrian entrance from the north and at the main gate.

Action Needed	Responsible Party	Estimated Cost
Construct universally-accessible trail	NYSDEC	\$200,000
Informational and wayfinding signage	NYSDEC	\$2,500

Project 15 Vanderwhacker Mountain Wild Forest Trail Improvements

Vanderwhacker Mountain Wild Forest is made up of numerous state-owned parcels throughout Essex and Warren Counties. These lands include two isolated parcels adjacent to and west of Scaroon Manor Day Use Area and Eagle Point Campground yet have virtually no connection for trails and other public uses. The Unit Management Plan for the Vanderwhacker Mountain Wild Forest recognizes that these lands are underutilized and have the potential for expanded snowmobile and hiking trail use but are generally too wet and too rough to be suitable for mountain bikes.



- Designate and construct a snowmobile trail providing access between the hamlets of Pottersville and Schroom Lake.
- Reopen the Vanderwhacker trail to snowmobiles. Add DEC snowmobile markers.
- Develop hiking trail network on state lands on the west side of Route 9.
- Post “Wild Forest” signs at the points where the Schroom Lake snowmobile trails enter State land. Add DEC snowmobile markers to these sections of trail, as well.
- Construct snowmobile trail to facilitate access between Pottersville and Schroom Lake. Reach agreements with private property owners.

Action Needed	Responsible Party	Estimated Cost
Undertake recommended signage improvements	NYSDEC	\$500
Construct snowmobile trail between Pottersville and Schroom Lake	NYSDEC	\$15,000

Project 16 Snowmobile Trail Network Improvements

The snowmobile network primarily consists of a south to north trail that runs just west and parallel to Route 9 and north to Pottersville. Several short dead end side trails exist including a trail leading into Chestertown from Brant Lake area and ending at the southeastern bay of Loon Lake. The trail link between Pottersville and the Town of Schroon is unsigned and not maintained. Property owner issues must be resolved to strengthen this link. A new connection into the Town of Minerva needs to be established for snowmobilers to gain access into the heart of the Adirondacks. Recommended improvements include:

- a. Designate and construct a snowmobile trail which will provide snowmobile access between the hamlets of Pottersville and Schroon Lake, using a combination of existing trails and new trail construction on public and private land as outlined in the Vanderwhacker Mountain Wild Forest Unit Management Plan.
- b. Reopen Vanderwhacker trail in Vanderwhacker Mountain Wild Forest to snowmobiles reclaiming the existing old road network.
- c. Formally extend the trail from where it ends at Loon Lake Beach west across the Riparius Bridge and north along the existing snowmobile trail in Johnsburg.
- d. Establish an official snowmobile crossing over the Hudson River at Riparius or North Creek.
- e. Establish a snowmobile connection north into Minerva.

Action Needed	Responsible Party	Estimated Cost
Construct snowmobile trail between Pottersville and Schroon Lake	North Warren Trailblazers snowmobile club with NYSDEC	\$14,000
Provide snowmobile connection into Minerva	North Warren Trailblazers snowmobile club with NYSDEC	Variable

Project 17 Palmer Pond State Land Area

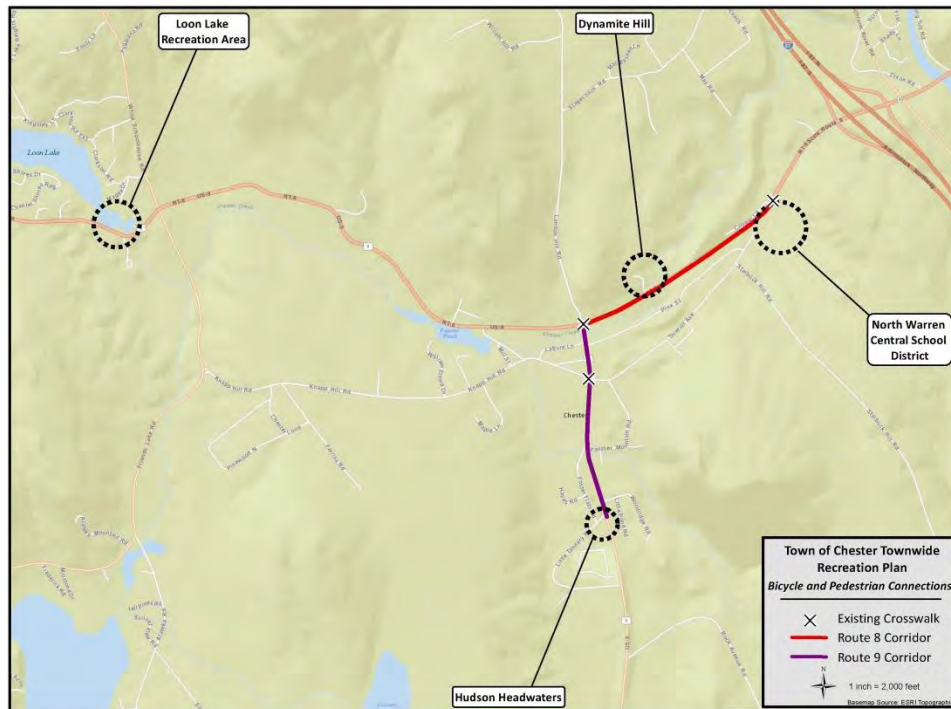
Palmer Pond is a 241-acre state land parcel with a large pond that can be reached by an easy and scenic walk from the parking area at the end of Palmer Pond Road, off state Route 8. This area is particularly good for family hiking with small children. It just needs to be discovered. There are a number of opportunities to take advantage of scenic views and for connections to other trail systems and recreation areas. This would provide a more attractive hiking and skiing experience for users. Palmer Pond is Side trails provide a variety of attractive vistas.

- a. Develop a trail loop around Palmer Pond as a ski trail.
- b. Work on establishing partner outlets for parking and access with Friends Lake Inn.
- c. Establish official trail links to new state land parcels known as Ice Meadow and Upper Hudson River Lands.
- d. Make improvements for accessibility into the site.
- e. Add informational and wayfinding signage.
- f. Develop an informal accessible launch for canoes and kayaks

Action Needed	Responsible Party	Estimated Cost
Provide informational and wayfinding signage	NYSDEC	\$1,500
Establish trail loop around Palmer Pond	NYSDEC	\$10,000
Construct accessible launch for canoes and kayaks	NYSDEC	\$1,000

Project 18 Bicycle Pedestrian Improvements

There are currently no designated bikeways, walking paths or sidewalks along any of State Route 8 and most of State Route 9. Cycling and walking trends are causing there to be many more people walking, running and bicycling along these roads despite the lack of dedicated facilities to these recreational activities. Also, increased recreational opportunities at Dynamite Hill Recreation Area are drawing pedestrians to and from the North Warren School, Dynamite Hill Recreation Area, nearby residential neighborhoods and the general business district along the high speed traffic on Route 8. The following recommendations target this issue with the goal of making the community a safer and more enjoyable experience for pedestrians and cyclists.



- a. State Route 8
 - Develop the current path utilized as a snowmobile trail into a formal trail for pedestrians.
 - Develop bicycle connection between Starbuckville and Brant Lake hamlet by increasing the width of the shoulders where appropriate and marking the road shoulders for bicycle use on both sides of Route 8.
 - Formalize the existing trail heading east from Dynamite Hill and enhance with signage and appropriate safety measures at the Chester Creek crossing. Where the trail ends near the large grassy hill, it should continue east along the northern right-of-way of Route 8. The intersection with the existing school crossing should be integrated with this trail and the existing striped and signed crossings should continue to be utilized.
 - Develop bicycle connection between Riparius and Chestertown. Increase the shoulders where appropriate and mark the road shoulders for bicycle use.
 - Conduct spot road improvements to improve conditions for cyclists:
 - Install grate openings that are a “bike-friendly” pattern or run perpendicular to the travel direction.

- Ensure that the seam of the pavement does not occur in the middle of the shoulder, or is properly feathered, will provide a smooth, regular surface for cyclists.
- Undertake targeted road sweeping to reduce the potential hazards from sand and gravel accumulation.
- Provide bike racks in locations near public buildings and in public parking areas and encourage racks at all retail establishments.

b. State Route 9

- Mark the road shoulders for bicycle use on both sides of Route 9 from the Town of Warrensburg north to the Town of Schroom.
- Extend the existing sidewalk on the southbound side to Chester-Horicon Health Center. Where the sidewalks end, continue south on Foster Flats Road which would connect pedestrians directly to the Health Center facility entrance drive. A shared use path or bicycle boulevard could be a potential design alternative.
- Extend the existing sidewalk on the northbound side to Rite Aid Pharmacy.
- Develop an access management plan that would seek to reduce access points and curb cuts to create a better defined path for vehicles and increase safety for pedestrians and cyclists.
- Improve traffic and pedestrian flow at the intersection of Route 9/Riverside Drive/Theriot Avenue by reducing pavement widths and better define movement patterns.
- Conduct spot road improvements to improve conditions for cyclists:
 - Install grate openings that are a “bike-friendly” pattern or run perpendicular to the travel direction.
 - Ensure that the seam of the pavement does not occur in the middle of the shoulder, or is properly feathered, will provide a smooth, regular surface for cyclists.
 - Undertake targeted road sweeping to reduce the potential hazards from sand and gravel accumulation.
 - Provide bike racks in locations near public buildings and in public parking areas and encourage racks at all retail establishments.

c. Friends Lake Road and Loon Lake Road

- Improve road conditions for hiking-biking loop around Friends Lake. Study right-of-way, easements and other access options to widen road shoulders. Mark the road shoulders for bicycle-pedestrian use.
- Improve road conditions for hiking-biking loop around Loon Lake. Study right-of-way, easements and other access options to widen road shoulders. Mark the road shoulders for bicycle-pedestrian use.

Action Needed	Responsible Party	Estimated Cost
Bicycle road share improvements between Starbuckville and Brant Lake	Town of Chester and NYSDOT	\$350,000
Bicycle road share improvements between Chestertown and Riparius	Town of Chester and NYSDOT	\$200,000
Extend the existing sidewalk on the southbound side to Chester-Horicon Health Center and on the northbound side to Rite Aid Pharmacy	Town of Chester and NYSDOT	\$300,000

Bike-hike road improvements around Friends Lake	Town of Chester and NYSDOT	\$100,000
Route 9 Bike and Pedestrian Improvements <ul style="list-style-type: none"> ▪ Improve intersection of Route 9/Riverside Drive/Theriot Avenue ▪ Mark the road shoulders for bicycle use on both sides of Route 9 from the Town of Warrensburg north to the Town of Schroon ▪ Develop access management plan 	Town of Chester and NYSDOT	\$10,000 \$20,000 \$15,000
Bike-hike road improvements around Loon Lake.	Town of Chester and Warren County	\$100,000

Project 24 Chestertown Bike-Hike-Blueway Trail

This project is to develop a feasibility study for a 10.7-mile bike-pedestrian path between the hamlet of Chestertown and Scaroon Manor Day Use Area. The bike – pedestrian path would utilize mostly public lands along existing informal paths, low use roads, road shoulders, utility right-of-ways, and snowmobile trails. The kayak-canoe trail would run parallel to the bike-pedestrian path and utilize Chester Creek, Schroon River and Trout Brook. The goal of the project is to develop a path for families that links the public and private campgrounds with recreational resources and access points along the Schroon River. The project seeks to build upon on the strategies in the First Wilderness Corridor Heritage Plan and expand tourism and economic development in the corridor by leveraging the variety and quality of recreation trails and other facilities.

The following presents an outline of the elements to be included in the feasibility study: Rights-of-way inventory; existing public trails inventory (north and south connectors); existing public and private roadways and trails condition and use assessment; adjoining or intervening lands ownership and land-use analysis; wetlands and other protected waters overview; historical and archeological resources overview; potential easements and land transfer needs assessment; summary of federal, state and local permitting requirements; summary of involved and interested agencies, organizations, non-profits; conceptual trail plan alternatives; phasing plan; feasibility study narrative; long form EAF; and preliminary construction cost estimate.

The specific trail sections are as follows:

- Chestertown Town Hall to Dynamite Hill Recreation Area to the N. Warren School - 0.9 miles
- Dynamite Hill Recreation Area to Starbuckville Dam - 1.2 miles
- Starbuckville Dam to Pottersville - 4.7 miles
- Pottersville to Scaroon Manor - 3.9 miles

Action Needed	Responsible Party	Estimated Cost
Implement Feasibility Study for Hike-Bike-Blueway: Chestertown to Scaroon Manor	Town of Chester	\$41,400 (Grant request \$20,700 plus Town match \$20,700) NYSDOS LWRP grant awarded 12/10/14



PLAYGROUND, PARKING, AND CIRCULATION IMPROVEMENTS

DYNAMITE HILL RECREATION AREA

NORTH WARREN CHAMBER OF COMMERCE

NORTH WARREN CENTRAL SCHOOL

CROSSWALK

NY 8 / US 9

PRIMARY FUTURE TRAIL CIRCULATION OPTION

MAIN ST

TOWN HALL COMPLEX

NATURE TRAIL LOOP

SIDEWALK EXTENSIONS

PRIMARY FUTURE TRAIL CIRCULATION OPTION

US 9

SOUTHERN TRAIL HUB AT MEMORIAL PARK

I-87

ADIRONDACK NORTHWAY

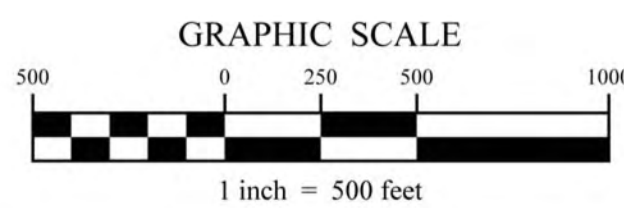


Figure 4: Conceptual Plan for Chestertown Pedestrian Circulation Improvements

CHESTER TOWNWIDE RECREATION PLAN

FEBRUARY 2015



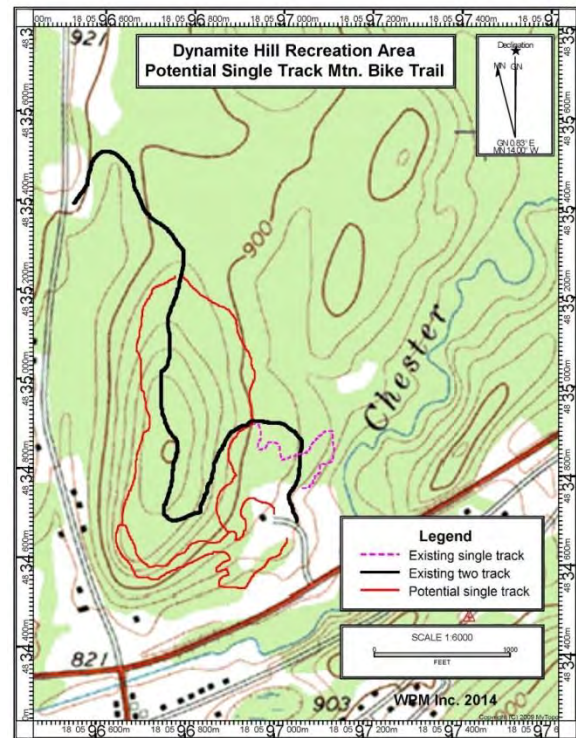
This document was prepared for the New York State Department of State with funds provided under Title 11 of the Environmental Protection Fund



Project 25 Dynamite Hill Recreation Area Improvements

Improvements to Dynamite Hill are comprehensive with the intention to upgrade infrastructure and make the park more accessible and attractive year round for visitors and residents. Specific projects are as follows:

- a. Design and Construction of a dedicated Single Track Mountain Bike Trail has been designed for intermediate and expert single-track mountain bike riders. This new trail will add significant distance to the single and two track trails that currently exist as part of the system. The trail is laid out by utilizing natural topographic features along with turns and grade fluctuations to maximize the aesthetic and recreational experience of the users. A map of the proposed trail locations is found below. The difficulty ratings for the trails and the associated standards will be in accordance with International Mountain Bicycling Association blue square and black diamond designations (see Appendix E). Construction standards for the trails are listed in Appendix E.
- b. Improve three trailheads with consistent welcoming and wayfinding signage. Recommendations can be found in Appendix C. Add magnetic trail counter for tracking use of the trail system.
- c. Develop a long-term trail maintenance plan that would utilize a committed core of volunteers with specific tasks at regular intervals during the year.
- d. Establish a lighted cross-country trail loop that would begin from the trailhead at the warming hut providing increased opportunities for families near the center of the ski area.
- e. Purchase and install a new Mighty Might handle downhill ski tow.
- f. Develop and install a new playground designed for children under the age of 12. Locate the playground between the parking lot and the Little League field in an area that is visible from Route 8 (see Concept Plan A).
- g. Install First Wilderness Heritage Corridor Kiosk provided by Warren County. Locate the kiosk near the North Warren Chamber of Commerce.



Action Needed	Responsible Party	Estimated Cost
Construct mountain bike trail	Town of Chester with Steve Ovitt & volunteers	\$23,500 materials and supervision
Install signage at trailheads	Town of Chester	\$15,000
Develop long-term trail maintenance plan	Town with volunteers	None
Purchase and install new Mighty Might handle downhill ski tow	Town of Chester	\$32,000
Purchase and install new playground	Town of Chester with North Warren Chamber	\$60,000 – 75,000
Develop and install First Wilderness Heritage Corridor Kiosk	Warren County Planning Department	\$10,000

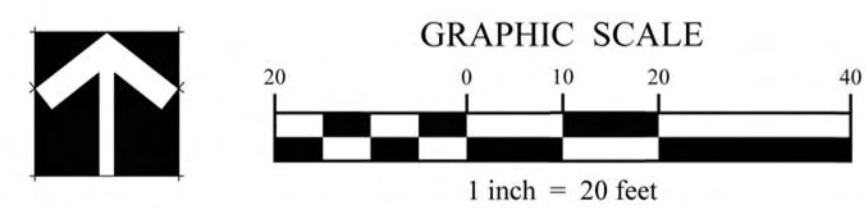


Figure 5: Conceptual Plan for Dynamite Hill Recreational Area Improvements
 CHESTER TOWNWIDE RECREATION PLAN
 FEBRUARY 2015



This document was prepared for the New York State Department of State with funds provided under Title 11 of the Environmental Protection Fund



Project 26 Chester Brook Nature Trail

There is an outstanding opportunity to develop a walking trail behind the Chester Municipal Center that introduce and orient people to the Chester Creek and the greater snowmobile trail system that exists along the adjacent north-south National Grid power line corridor. This path is on Town land and could be constructed with minimal effort and cost. It has the capacity to become an integral part of the outside recreation facilities and easily be connected to other recreation areas at the Chester Municipal Center and south to Memorial Park adjacent to the cemetery. The feasibility of continuing the trail along the snowmobile trail to Loon Lake at Route 8 should also be investigated.

Action Needed	Responsible Party	Estimated Cost
Plan and construct nature trail along Chester Creek	Town of Chester with volunteers	No cost if constructed with volunteers
Make repairs to foot bridge over Chester Creek	Town of Chester with volunteers	No cost if constructed with volunteers
Link path to the north-south power right-of-way corridor	Town of Chester with volunteers	No cost if constructed with volunteers
Prepare and install signs, benches and trail markers	Town of Chester with volunteers	\$2,500

Project 27 Town Administration Building Property Improvements

The exterior public spaces around the Chester Municipal Center and School playing fields require upgrades to meet the changing needs of the year round and seasonal populations. This area represents the main place for young people to “hang out”, play and watch sports. The building and grounds serve as the community center and the growing seasonal and year round retirement community also requires space for passive recreation and socialization at this site. The School District has allocated a 25’ x 75’ area for installation of a playground behind the basketball courts.

Action Needed	Responsible Party	Estimated Cost
Install new playground	North Warren Central School District	\$20,000 volunteers to install
Provide outdoor lighting, bike rack, benches at basketball courts	Town of Chester	Outdoor lighting: \$14,500
Identify and develop greenspace for picnicking, bocce, horseshoes, disc ball	Town of Chester	Site Improvements: \$1,500 Sports equipment: \$200
Provide indoor space for winter exercise room	Town of Chester	To be determined

Project 28 Pottersville Town Park Improvements

The assets of this park are substantial but it is dire need of safety and maintenance upgrades. Improvements should focus on the playground area where there are stability and safety issues.

Action Needed	Responsible Party	Estimated Cost
Purchase clean fill	Town Crews	Minimal cost
Replace playground equipment	Town of Chester	\$25,000
Install basketball court lighting	Town of Chester	\$14,500
Develop maintenance plan for terrestrial invasive species.	Town Highway and Recreation Departments	No cost
Purchase and install park sign	Town of Chester	\$500

Project 29 Gambles Park Improvements

Gambles Park is a high quality destination with access on Trout Brook. It is for ideal for passive recreation like picnicking, fly-fishing, and wading. The site is generally underutilized and has opportunities for canoe/kayak access when the water is high.

Action Needed	Responsible Party	Estimated Cost
Design and install new sign	Town of Chester	\$250
Add park site to brochures and Town website	Town of Chester	No cost

Project 30 Loon Lake Pocket Park Improvements

Due to the transport of aquatic invasive species, the Town no longer permits the launching of small boats at Loon Lake Park. This pocket park maintains its charm as a site where up to two small boats can tie up and access the nearby restaurants or enjoy a BBQ or picnic by the lake.

Action Needed	Responsible Party	Estimated Cost
Install small sign that identifies it as a town-owned park designed for passive activities & no launching	Town of Chester	\$250

Project 31 Loon Lake Town Beach Pedestrian Improvements

This park is located at a busy Route 8 where there is a concentration of motels, RV campgrounds, and other small businesses located just across Route 8 from the Town Beach. At times this combination leads to an increased risk of accidents in this vicinity. The area was studied by transportation planners to determine potential traffic and pedestrian solutions for the site. See Appendix B for further details.

These improvements included:

- a. Provide a recommendation to NYSDOT for a new striped and signed pedestrian crosswalk across Route 8. Place crossing at the north end of the parking lot, before the guard rail begins on the north side of the road due to maximize sight distances and minimize potential conflict with vehicles entering and exiting the parking area. Installing pedestrian crossing warning signs to alert vehicles which do not have adequate sight distance along the curve.
- b. Create a natural buffer between the grass/beach area and the parking lot to improve aesthetics and filter stormwater runoff.
- c. Define traffic flow into and out of the parking area through curb cuts as to increase safety for motorists and pedestrians.
- d. Pave and stripe the existing parking area for the Loon Lake Public Beach.

Action Needed	Responsible Party	Estimated Cost
Provide new striped and signed pedestrian crosswalk	NYSDOT	\$2,500
Construct natural buffer between parking and beach areas	Town of Chester	\$2,000 for landscaping materials
Construct parking lot improvements	Town of Chester	\$5,000

Project 32 Riparius Pocket Park Improvements

The east side of the bridge has a passive pocket park (no parking) that looks south at the picturesque Hudson River. It presently has no signage that links it to the Riparius Train Station on the other side of the Hudson River or the state hiking trailhead down the Hudson River.

Action Needed	Responsible Party	Estimated Cost
Install kiosk with local and regional wayfinding and interpretive information	Town of Chester with Warren County	\$10,000

Project 33 Starbuckville Dam Pocket Park Improvements

This is a primarily passive park with some limited access for fly fishermen. The site is known for good fishing and, with some safety measures, could become a universally-accessible site for all fishermen. It also has the potential to become a central gathering point for bicycle groups and families. The addition of benches, bike racks, kayak/canoe put-in, an accessible fishing platform, and informational and interpretive signage would fully develop the site.

Action Needed	Responsible Party	Estimated Cost
Construct handicap-accessible fishing platform with small pavilion	Town of Chester	\$20,000
Construct Kayak/Canoe Put-In	Town of Chester with volunteers	\$10,000
Purchase and install signage	Town of Chester	\$1,000

Project 34 Memorial Park Improvements

This park is currently undeveloped and located on town-owned lands adjacent to the Chestertown Cemetery. A concept plan has been professionally developed for the site which calls for Little League playing fields, a playground and a fitness trail. There are substantial costs related to getting the site prepared including clean fill to bring the site up to grade. The Town is continuing to raise funds for the project with the goal of completing the project by 2016. A trailhead beginning at Memorial Park could be linked to the Chester Municipal Center via the Chester Creek Nature Trail.

Action Needed	Responsible Party	Estimated Cost
Purchase clean fill	Town of Chester	\$15,000
Construct soccer and Little League fields	Town of Chester	\$8,000
Purchase and install playground	Town of Chester with volunteers	\$8,000

Project 35 North Warren School Nature Trail

This trail was originally a community service project constructed by a local Boy Scout troop. While it currently serves primarily as a resource for the cross-country track team, the trail has become overgrown and is in need of maintenance. With some organized maintenance and appropriate signage, this walking path could become an important resource for the entire community.

- a. Cut and grub existing trail and construct a natural surface trail.
- b. Develop a management and maintenance plan.
- c. Install appropriate signage and make it known the trail is open and available to the public.
- d.

Action Needed	Responsible Party	Estimated Cost
Prepare trail for public use	North Warren School District	\$500 for wayfinding and interpretive signs

Chapter Four: Project Implementation Chart

The following chart summarizes the projects recommended throughout the Recreation Plan. The blue indicates the highest priority projects – meaning those that can be accomplished at no to low cost. The brown indicate the next important layer of projects to implement, and the purple are projects that are still important, will take substantial effort to accomplish.

PROJECT 1-12		TOWNWIDE PUBLIC TRAIL SYSTEM		HIGHEST PRIORITY
Action Needed		Responsible Party	Estimated Cost	Funding Sources
1. Panther Mountain Trail *Highest Priority				
Obtain public access easements		Town of Chester	Variable but minimal	Town with donations
Construct trails		Town with volunteers	Minimal	Town with donations
Install trail markers and signage		Town with volunteers	Minimal	<i>Creating Healthy Places to Live, Work and Play Program</i>
Connect trail to Tower Mountain		Town with volunteers	Variable but minimal	Town with donations
2. Vetter’s Trail Loop (Vetter’s/Round Top/ Meade Mountains)				
Obtain public access easements		Town of Chester	Variable but minimal	Town with donations
Improve existing trails		Town with Volunteers	Minimal for trail markers and signage	Town with donations
Provide trail connections between three mountains		Town with Volunteers	Minimal for trail markers and signage	Town with donations
3. Stewart’s Mountain Trail				
Obtain public access easements		Town of Chester	Variable but minimal	Town with donations
Construct trail		Town with Volunteers	Minimal for trail markers and signage	Town with donations
4. Kipp Mountain Trail				
Obtain public access easements		Town of Chester	Variable but minimal	Town with donations
Construct trail		Town with Volunteers	Minimal for trail markers and signage	Town with donations
Provide trail connection to Tower Mountain		Town with Volunteers	Variable	Town with donations
5. Moxham Mountain Trail Connector				
Obtain public access easements		Town of Chester	To be determined	Town with donations

Construct trail	Town with Volunteers	Minimal for trail markers and signage	Town with donations
Install wayfinding signage	Town of Chester	\$1,500	North Country National Scenic Trail Program
6. Tower Mountain Trail			
Obtain public access easements	Town of Chester	Variable but minimal	Town with donations
Construct trail to peak	Town with volunteers	\$3,000 Trail construction, markers and signage	Town with donations
7. Remington Mountain Trail			
Obtain public access easements	Town of Chester	Variable but minimal	Town with donations
Construct trail	Town with Volunteers	Minimal for trail markers and signage	Town with donations
Provide connector trail to National Grid corridor	Town with Volunteers	Minimal due to existing roads/ trails	Town with donations
8. Henderson-Bibby-Ethan Trail Loop			
Obtain public access easements	Town of Chester	Variable but minimal	Town with donations
Construct trails	Town with Volunteers	Minimal for trail markers and signage	Town with donations
Link all trails with connectors	Town with Volunteers	To be determined	Town with donations
9. Green-Catamount-Ledge Trail Loop			
Establish public paid and guided use of trails to peaks	Natural Stone Caves	Variable	Natural Stone Caves
10. Huckleberry Mountain Trail			
Obtain public access easements	Town of Chester	Variable but minimal	Town with donations
Construct trail	Town with Volunteers	Minimal for trail markers and signage	Town with donations
Provide connector trail I to Tower Mountain	Town with Volunteers	To be determined	Town with donations
11. Campground Mountain Trail			
Obtain public access easements	Town of Chester	Variable but minimal	Town with donations
Construct or improve existing trail	Town with Volunteers	Minimal for trail markers and signage	Town with donations
12. McGann Mountain Trail			
Obtain public access easements	Town of Chester	Variable but minimal	Town with donations

Construct trail	Town with Volunteers	Minimal for trail markers and signage	Town with donations
Provide connector trail to Tower Mountain	Town with Volunteers	To be determined	Town with donations
PROJECT 13 HUDSON RIVERSIDE TRAILS MEDIUM PRIORITY			
Action Needed	Responsible Party	Estimated Cost	Funding Sources
Develop interconnected trail system with signage	NYSDEC	\$ 5,000	NYSDEC
Work with DEC to establish a marked trail system	NYSDEC with Town representatives	Minimal for trail markers and signage	NYSDEC
Improve existing trails	NYSDEC with volunteers	\$ 10,000	NYSDEC
PROJECT 14 SCAROON MANOR DAY USE AREA TRAIL EXTENSION LOWEST PRIORITY			
Construct universally-accessible trail	NYSDEC	\$200,000	NYSDEC
Provide informational and wayfinding signage	NYSDEC	\$2,500	NYSDEC
PROJECT 15 VANDERWHACKER MOUNTAIN WILD FOREST TRAIL IMPROVEMENTS LOWEST PRIORITY			
Undertake recommended signage improvements	NYSDEC	\$500	NYSDEC
Construct snowmobile trail between Pottersville and Schroon Lake	NYSDEC	\$15,000	NYSDEC
PROJECT 16 SNOWMOBILE TRAIL NETWORK IMPROVEMENTS HIGHEST PRIORITY			
Construct snowmobile trail between Pottersville and Schroon Lake	NYSDEC	\$14,000	NYSDEC
Provide snowmobile connection into Minerva	Snowmobile Clubs with DEC	To be determined	Trailblazers Snowmobile Club
PROJECT 17 PALMER POND TRAIL IMPROVEMENTS MEDIUM PRIORITY			
Provide informational and wayfinding signage	NYSDEC	\$1,500	NYSDEC
Establish trail loop around Palmer Pond	NYSDEC	\$10,000	NYSDEC
Establish trailhead from Friends Lake Road	NYSDEC	\$2,500	NYSDEC
Construct accessible launch for canoes and kayaks	NYSDEC	\$1,000	NYSDEC
PROJECTS 18-23 BICYCLE PEDESTRIAN IMPROVEMENTS MEDIUM PRIORITY			
18. Bicycle road share improvements between Starbuckville and Brant Lake	Town of Chester and NYSDOT	\$350,000	NYSDOT

19. Bicycle road share improvements between Chestertown and Riparius	Town of Chester and NYSDOT	\$200,000	NYSDOT
20. Extend the existing sidewalk on the southbound side to Chester-Horicon Health Center and on the northbound side to Rite Aid Pharmacy	Town of Chester and NYSDOT	\$300,000	NYSDOT
21. Bike-hike road improvements around Friends Lake	Town of Chester and Warren County	\$100,000	NYSDOT
22. Bike-hike road improvements around Loon Lake	Town of Chester and Warren County	\$100,000	NYSDOT
23. Route 9 Bike and Pedestrian Improvements			
▪ Improve intersection of Route 9/Riverside Drive/Theriot Avenue	Town of Chester/NYSDOT	\$10,000	NYSDOT/AGFTC
▪ Mark the road shoulders for bicycle use on both sides of Route 9 from the Town of Warrensburg north to the Town of Schroom	Town of Chester/NYSDOT	\$20,000	NYSDOT/AGFTC
▪ Develop access management plan	Town of Chester/NYSDOT	\$15,000	NYSDOT/AGFTC
PROJECT 24 CHESTERTOWN HIKE-BIKE-BLUEWAY TRAIL HIGHEST PRIORITY			
Action Needed	Responsible Party	Estimated Cost	Funding Sources
Implement Feasibility Study for Hike-Bike-Blueway: Chestertown to Scaroon Manor	Town of Chester Warren County's <i>First Wilderness Heritage Corridor Program</i>	\$41,400 (Grant request \$20,700 plus Town of Chester match \$20,700)	NYSDOS LWRP grant: Awarded 12/10/14
PROJECT 25 DYNAMITE HILL RECREATION AREA IMPROVEMENTS HIGHEST PRIORITY			
Construct mountain bike single track trail	Town of Chester with Steve Ovitt & volunteers	\$23,500 materials and supervision	NYSDOS LWRP
Install welcoming and wayfinding signage at trailheads	Town of Chester	\$15,000	<i>First Wilderness Heritage Corridor Program</i>
Develop long-term trail maintenance plan	Town with volunteers	None	None required
Purchase and install Mighty Might handle downhill ski tow	Town of Chester	\$32,000	Warren County Occupancy Tax/DOS Grant
Purchase and install new playground	Town of Chester with North Warren Chamber	\$60,000-75,000	Donations and KaBoom Grant

Install <i>First Wilderness Heritage Corridor</i> Information Kiosk	Warren County Planning Department	\$15,000	Warren County NYSDOS grant
PROJECT 26 CHESTER BROOK NATURE TRAIL HIGHEST PRIORITY			
Plan and construct nature trail along Chester Creek	Town of Chester/ volunteers	No cost if constructed with volunteers	None required
Make repairs to foot bridge over Chester Creek	Town of Chester/ volunteers	No cost if constructed with volunteers	None required
Link path to the north-south power right-of-way corridor	Town of Chester/ volunteers	No cost if constructed with volunteers	None required
Prepare and install signs, benches and trail markers	Town of Chester/ volunteers	\$2,500	<i>Creating Healthy Places to Live, Work and Play Program</i>
PROJECT 27 TOWN ADMINISTRATION BUILDING PROPERTY IMPROVEMENTS MEDIUM PRIORITY			
Action Needed	Responsible Party	Estimated Cost	Funding Sources
Install new playground	North Warren School District	\$20,000 Volunteers to install	<i>Creating Healthy Places to Live, Work and Play Program</i>
Provide outdoor lighting, bike rack, benches at basketball courts	Town of Chester	Outdoor lighting: \$14,500	<i>Creating Healthy Places to Live, Work and Play Program</i>
Identify and develop greenspace for picnic tables, bocce, horseshoes, disc ball	Town of Chester	Site Improvements: \$500 Sports equipment: \$200	<i>Creating Healthy Places to Live, Work and Play Program</i>
Provide indoor space for winter exercise room	Town of Chester	To be determined	Town of Chester
PROJECT 28 POTTERSVILLE TOWN PARK IMPROVEMENTS MEDIUM PRIORITY			
Purchase clean fill	Town Crews	Minimal	Town of Chester
Replace playground equipment	Town of Chester	\$25,000	Seek funding from grants
Install basketball court lighting	Town of Chester	\$14,500	Town of Chester
Develop maintenance plan for terrestrial invasive species.	Town of Chester Highway and Recreation Departments	No cost	Town of Chester
Purchase and install park sign	Town of Chester	\$500	Town of Chester
PROJECT 29 GAMBLES PARK IMPROVEMENTS LOWEST PRIORITY			
Design and install a new sign	Town of Chester	\$250	Town of Chester
Add park to brochures and Town's website	Town of Chester	\$250	Town of Chester

PROJECT 30 LOON LAKE POCKET PARK IMPROVEMENTS LOWEST PRIORITY			
Install small sign that identifies it as a town-owned park designed for passive activities & no launching	Town	\$250	Town of Chester
PROJECT 31 LOON LAKE TOWN BEACH PEDESTRIAN IMPROVEMENTS MEDIUM PRIORITY			
Action Needed	Responsible Party	Estimated Cost	Funding Sources
Provide new striped and signed pedestrian crosswalk	NYSDOT	\$2,500	Town of Chester
Construct natural buffer between parking and beach areas	Town of Chester	\$2,000 for landscaping materials	Town of Chester
Construct parking lot improvements	Town of Chester	\$5,000	Town of Chester
PROJECT 32 RIPARIUS POCKET PARK IMPROVEMENTS MEDIUM PRIORITY			
Install kiosk with local and regional wayfinding and interpretive information	Town of Chester with Warren county	\$10,000	Warren County NYSDOS grant
PROJECT 33 STARBUCKVILLE DAM POCKET PARK IMPROVEMENTS MEDIUM PRIORITY			
Construct handicap-accessible fishing platform with small pavilion	Town of Chester	\$25,000	DOS LWRP Grant (50%)
Construct Kayak/Canoe Put-In	Town of Chester with volunteers	\$10,000	DOS LWRP Grant (50%)
Purchase and install signage	Town of Chester	\$1,000	Town of Chester
PROJECT 34 MEMORIAL PARK IMPROVEMENTS MEDIUM PRIORITY			
Purchase clean fill	Town of Chester	\$15,000	Town of Chester
Construct soccer and Little League fields	Town of Chester	\$8,000	Potential in-kind contributor for trucking services.
Install new playground	Town of Chester with volunteers	\$8,000	Local fundraising
PROJECT 35 NORTH WARREN SCHOOL NATURE TRAIL MEDIUM PRIORITY			
Prepare trail for public use	North Warren School District	\$500 for signs	<i>Creating Healthy Places to Live, Work and Play Program and local Scout Troops</i>

Chapter Five: Implementation and Marketing Strategy

Overview

There are a number of strategies for Chestertown to employ that will assist in the implementation of the projects outlined in Chapter Four. There are five critical programmatic and marketing elements that need to be integrated into the present marketing and promotion efforts to making the Chestertown a successful destination for hiking and biking:

Designate a Townwide Trail Coordinator

Assign a person to focus on implementing the Townwide Recreation Plan. This person would report to the Town Board on a regular basis and seek partners able to assist in the planning, development and maintenance of the trail system.

Develop Family-Friendly Interactive Trail Programs

Make Chestertown the hike-bike gateway for beginner or novice hikers and bikers to become oriented in these sports before venturing out further into the Adirondacks. Brand the townwide trail system as the “Chester Trail Mix” to help the public to identify Chestertown as an all-season place for recreation.

Integrate the First Wilderness Heritage Corridor

Integrate the FWHC initiative into all existing and new recreation marketing initiatives. This program provides an inter-municipal revitalization strategy for the nine communities along the Upper Hudson River corridor and adjacent Delaware & Hudson rail line in Saratoga and Warren counties. It weaves recreational and heritage tourism experiences that encourage visitors to learn about the history, local landmarks, and cultural stories that make the area an interesting place to visit. <http://www.firstwilderness.com/chester>. This recommendation includes recognizing and supporting the development of the First Wilderness Heritage Trail. This 80 mile trail is designed as a hiking and mountain biking experience that connects the small and distinctive communities along this part of the Hudson River. The conceptual framework for a First Wilderness Heritage Trail – Corinth to Tahawus can be found in Appendix G.

Participate in the Adirondack Regional Economic Development Strategy

Actively participate with the Adirondack Trail Towns initiative by registering all trails and recreation sites on the *Adirondack Park Recreation Web Portal* - <http://visitadirondacks.com/recreation>. The Trail Town program is a consistent approach that capitalizes on the Adirondack Parks’ vast array of natural, historic, and cultural resources by connecting these assets through local, regional and statewide trail systems.

Implement a Comprehensive Signage Plan

Adopt the Comprehensive Signage Plan (see Appendix C) that includes a set of specific standards for both informational and wayfinding signage throughout the Town. A set of clean, simple graphical elements will serve to unify and connect the various recreation facilities and offerings. A unified interpretive and directional signage program will increase public awareness of the trail resources and build stewardship. Consistent signage along the corridor allows hikers and cyclists to track their progress and reinforces a sense of trail identity.

Several types of signage should be developed as part of the Comprehensive Signage Plan:

Gateway Signage - For viewing by passing vehicles entering the town, alerting travelers that they have arrived in Chestertown and for viewing by pedestrians or bicyclists who are at various hub recreation areas in the community such as the Chester Municipal Center. These signs would be large structures containing a full map and listing of all recreation destinations and trail facilities.



Wayfinding Signage – To direct recreationists to destinations using arrows and site names. These signs need to be placed at all decision points; and be scaled appropriately to mode of transportation taking place at the site (vehicle, bike, pedestrian, etc.).

Site Identification Signage – To reassure recreationists that they have arrived at the site they were looking for; and that the site is indeed part of the comprehensive recreation experience.

Trail Markers - To display useful information such as mileposts and distances to destinations and attractions along the trails.

Interpretive Signage - To provide a unique sense of place and be a destination park for a wide variety of users who will continue to return throughout the year. These might include strategic placement of kiosks; low profile exhibits; individual recreation site or trail system maps; plant/habitat identification signage; and historic site/cultural features informational signage.

Letterboxing and Geocaching Program – To provide an interactive element for families with children. Letterboxing is an educational adventure that begins with using the Internet to use clues to find the location of a specific letterbox. These clues, along with a personal stamp, personal log, and a compass are used to find a waterproof container filled with a special stamp and a log book. The letterboxer then stamps their personal log with the letterbox stamp, and uses their personal stamp in the log inside the letterbox container. Geocaching is similar but makes use of GPS units and coordinates to find their own treasure in waterproof containers. The difference is that the purpose of letterboxing is to "find a stamp, leave a stamp," whereas for geocaching a small object is placed in the cache, and the finder takes it and leaves an object of their own for the next finder. Integrate a creative QR Code system for geocaching and integrate interactive educational programs along appropriate trail sections.

