



www.feedercanal.org
 info@feedercanal.org
 (518) 792-5363

21 Thomson Ave, Suite 5
 Glens Falls, NY 12801

Feeder Canal Alliance



Walking Map & Trail Guide

Glens Falls Feeder Canal

About

The Feeder Canal Alliance, founded in 1987, is a nonprofit organization preserving, promoting and protecting the Glens Falls Feeder Canal and Towpath Trail through responsible recreation, environmental education and preservation of these historic places.

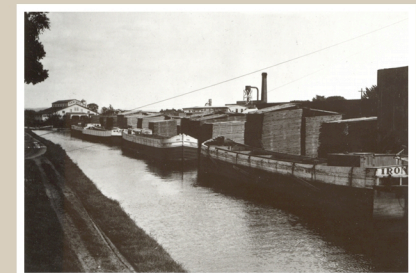
The canal and towpath today provide recreational opportunities for visitors and provide a glimpse into the past. The seven-mile Feeder Canal is the last remaining original canal in New York State. Enjoy using the parks and trails today!

Membership

If you canoe, kayak, run, walk or visit sites along the Glens Falls Feeder Canal, please consider joining our organization as a member or making a donation. Memberships start at \$20.

Individual	\$20	Lock Tender	\$50	Basin Master	\$250
Boatman	\$25	Weigh Master	\$100	Canal Boat Captain	\$500
				Fleet Owner	\$1,000

Visit www.feedercanal.org for details.



Kenyon Lumber, Hudson Falls

Events

Annual Clean Up
April

Glens Falls Brewfest
April

Membership Drive
April to June

Canoe/Kayak Race
& Recreational Paddle
First Saturday in June

Canal Splash
August

Pumpkin Painting for Kids
Late September

Annual Meeting
November



Visit www.feedercanal.org for exact dates.

Finding Your Way

Here is a list of access points. Parking is available at all of the below points. Docks for canoes and kayaks are located at Overlook Park, Murray Street, Shermantown Road and the Martindale Boat Basin. Motorized boats are not permitted. Dogs must be on a leash. Fishing is allowed but swimming is prohibited.

FEEDER DAM/OVERLOOK PARK (QUEENSBURY)
 From the Northway (I-87), take Exit 18. Go east on Main Street (Route 28). Take a right on Richardson Street at the traffic light. The park is at the end of Richardson Street.

MURRAY STREET (GLENS FALLS)
 From Main Street, turn south on Hudson Avenue to Murray Street. Turn right at the Post Office and follow Murray Street down the hill.

SHERMANTOWN ROAD (GLENS FALLS):
 Off Warren Street, across from East End Eatery.

WARREN STREET (HUDSON FALLS):
 Take a left off River Street, east of Watkins Garden Center.

Visit us online!



MURRAY PARK (HUDSON FALLS):
 At the corner of Melbourne Avenue and Route 4, north of the traffic circle.

HISTORIC COAL SILOS (HUDSON FALLS):
 Located on Pearl Street, east off Route 4.

FIVE COMBINES (HUDSON FALLS)
 Located on Burgoyne Avenue, half a mile south of the intersection of Route 196/Maple Avenue and Burgoyne Avenue.

NOTE:
 You must travel on streets for a short distance through Glens Falls. Follow the map to find your way.

Adopt A Trail!

Make a part of the Feeder Canal your own! Duties include reporting downed trees, graffiti and problems, tending and planting native gardens, raking the parks, picking up trash and debris and keeping your trail clean.

Call today for your free T-shirt with your two-year commitment: (518) 792-5363.

Map



Landmarks

A. Cooper's Cave	G. Warren County Bike Trail
B. Burger King	H. Stewart's
C. Glens Falls Civic Center	I. East End Eatery
D. Finch Paper	J. East Field Park
E. Go! Where Children Discover The World	K. Lehigh Paper
F. Hyde Collection	L. Jack & Jill's Ice Cream

Mileage

From Overlook Park to:

• Haviland Cove	0.5 mile
• Murray Street	1.5 miles
• Route 9	2 miles
• Shermantown Road	3 miles
• Murray Park, H.F.	5.5 miles
• Coal Silos	6 miles
• Five Combines	6.5 miles
• Fort Edward	9 miles

Legend

- Canal
- Trail
- Trail on road
- Park
- Hospital
- Warren Co. Bike Trail

Note:

Map not to scale!
Actual shape

This map was made possible with funds from
Glens Falls Hospital's program
Creating Healthy Places to Live, Work & Play
www.creatinghealthyplaces.wordpress.com



Designed by Advokate - www.advokate.net
Printed by Glens Falls Printing - www.gfprinting.com