

# STONY CREEK

## History

The small hamlet of Stony Creek can be found along the Dude Ranch Trail Scenic Byway. Tanning, logging, and dude ranches were a principal of livelihood for the people of Stony Creek for many decades, and visitors today can still enjoy stepping back in time and embracing the peace and quiet with a variety of outdoor recreation activities, including swimming, canoeing, horseback riding, and fishing, in the town's thousands of acres of Wild Forest.

Like many of the smaller hamlets, Stony Creek was comprised of basic community necessities including a hotel, churches, general store, and post office in its early years. Tanning was a major industry during the beginning periods of this settlement.

Today, Stony Creek only has a couple amenities for residents including a restaurant, library, and post office.



## Planning Context

The Town of Stony Creek has not completed a Comprehensive Plan and has not adopted Town Zoning or Subdivision regulations.

# HAMLET OF STONY CREEK

## Town of Stony Creek



Population: ~100<sup>1</sup>

Land Area:  
166 acres



No Major Roads

No Major  
Waterbodies



Median  
household  
income:<sup>3</sup> \$47,986



Median value of a  
single  
family home:<sup>4</sup>  
\$153,450



Housing Units: 70



8

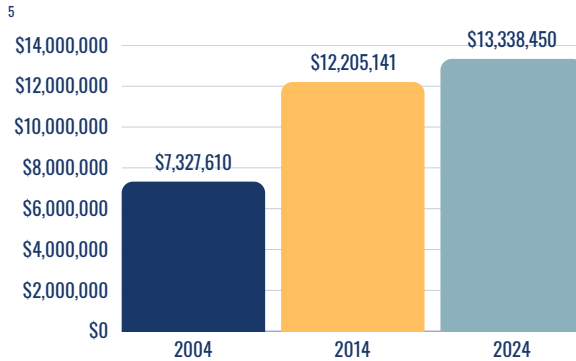
Vacant  
Parcels  
4 total acres

Adirondack Park Agency  
Approved Local Land  
Use Plan?

No



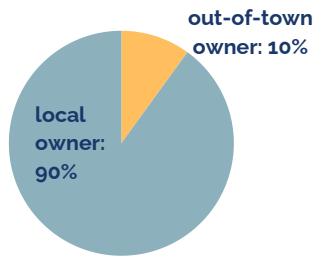
Full Market  
Value of  
All Parcels in  
Hamlet  
2004-2024  
adjusted for  
inflation



Acreege by Land Classification 2004-2024<sup>2</sup>



Parcel  
Ownership



## Community Services



Stony Creek  
Post Office



Hadley-Lake Luzerne  
Central School  
~10 miles away



No  
Fire and EMS



Stony Creek Free  
Library



No Grocery  
Store



No Pharmacy



No Medical



No Sewer District



No Water District



No Sidewalks



Streetlights



John O'Neill  
Green Meadows Park



No Trails



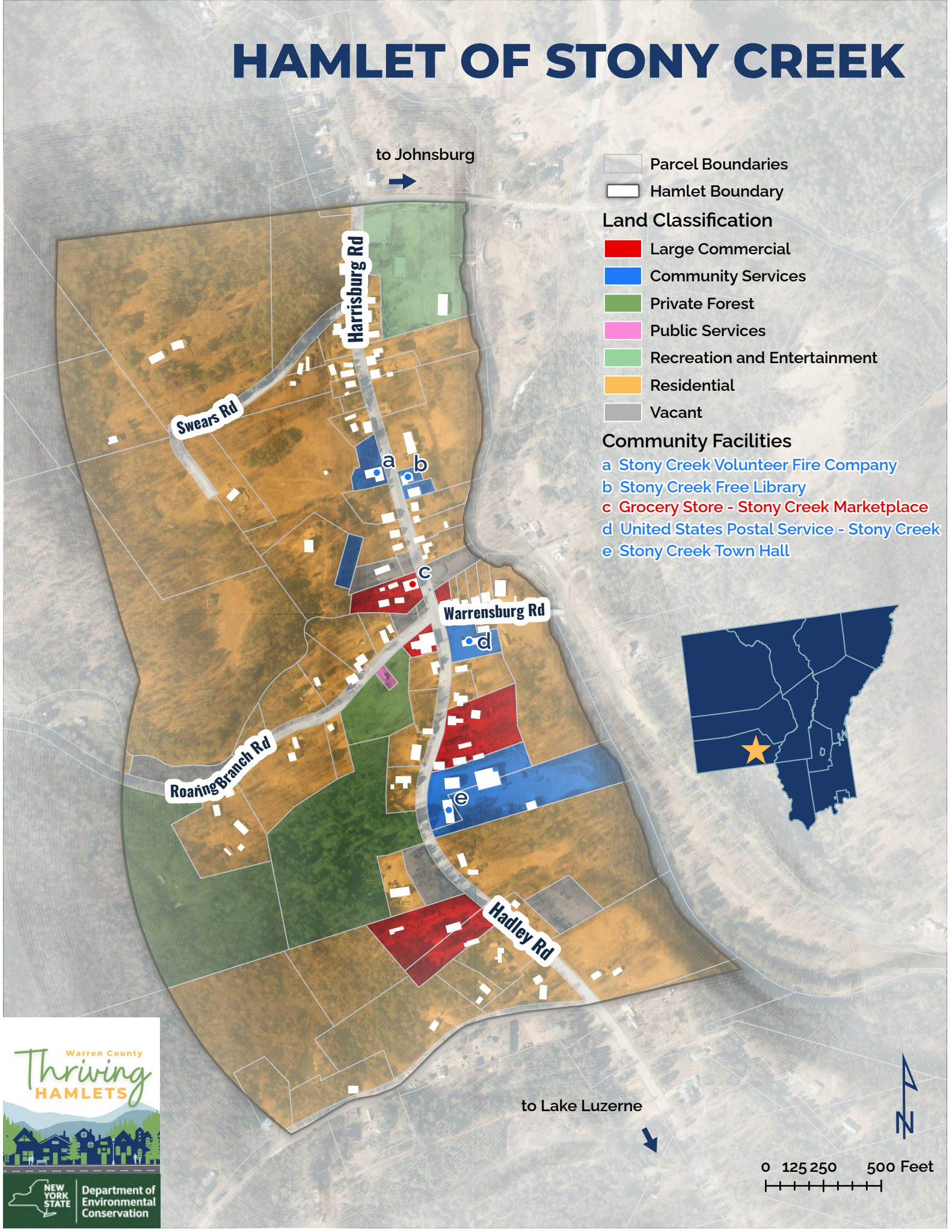
No Dog Park



No Community  
Garden

<sup>1</sup> population is estimated from 2020 decennial census. Census block boundaries do not align with hamlet boundaries so a best estimate was made based on building locations. <sup>2</sup> Land use averages are based on property class and do not include public rights of way. <sup>3</sup> ACS, 2023 5-year estimate for block group in which majority of the hamlet falls. <sup>4</sup> Data from NYS Real Property System, 2024 tax roll. Median year built and median value do not include mobile homes. <sup>5</sup> Data from NYS RPS, 2004, 2014, and 2024 tax rolls. Adjusted for inflation.

# HAMLET OF STONY CREEK



to Johnsborg



Parcel Boundaries

Hamlet Boundary

### Land Classification

Large Commercial

Community Services

Private Forest

Public Services

Recreation and Entertainment

Residential

Vacant

### Community Facilities

a Stony Creek Volunteer Fire Company

b Stony Creek Free Library

c Grocery Store - Stony Creek Marketplace

d United States Postal Service - Stony Creek

e Stony Creek Town Hall



Swears Rd

Harrisburg Rd

Roaring Branch Rd

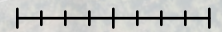
Warrensburg Rd

Hadley Rd

to Lake Luzerne



0 125 250 500 Feet



Warren County  
**Thriving  
HAMLETS**



NEW YORK STATE  
Department of Environmental Conservation