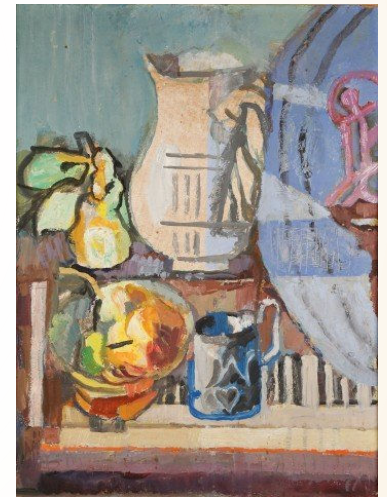


Glens Falls



1. *Weber Furlong*

Wilhelmina Weber Furlong (1878-1962) was a German-American artist and teacher. Among American's earliest avant-garde elite modernist painters, Weber Furlong was a major American artist who pioneered modern impressionistic still life painting at the turn of the twentieth century's American modernist movement. Some of her work is on display at the Hyde Collection in Glens Falls. Some examples of her artwork are below:



2. *Glens Falls Bay Street Cemetery*

Located on Bay Street in Glens Falls, visible from the road, easily accessible.

