

FIRST WILDERNESS TRAIL

Town of Corinth to the
Hamlet of Tahawus



Acknowledgments and Introductions

Chester Town Board/Advisory Committee

Craig R. Leggett, Town Supervisor

Michael Packer, Larry Turcotte, Councilman Karen Durose, Stephen Durkish



Project Sponsor

Warren County Planning Department

Contacts: Wayne LaMothe or Chris Belden



Project Funding Agency

New York State Department of State: This project is funded through the New York State Department of State with funds provided under Title 11 of the Environmental Protection Fund.

Project Consultants

The LA Group, P.C.

Contact: Tracey M. Clothier

Wilderness Property Management, Inc.

Contact: Steve Ovitt



Trail Identity



The Adirondacks was the first place Americans embraced the wilderness as a feature of civilization. The First Wilderness Corridor follows the Upper Hudson River from Saratoga Springs to North Creek. This wild and scenic river rolls through rapids, past dramatic cliffs of magnificent marble before it slows to flow easily through ice meadows, kept perpetually cleared of trees by the annual scouring of spring ice floes.



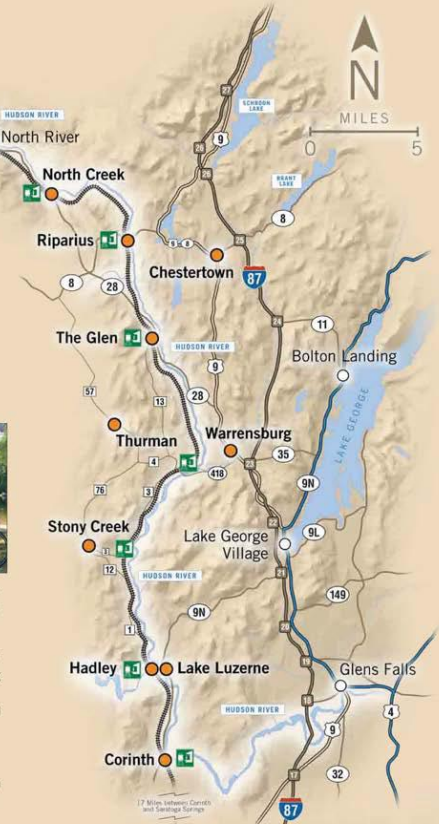
The land along the river first served as a hunting ground for Indian people, who established trails connecting the Mohawk Valley with the Champlain Valley. American and European soldiers followed these trails during the French and Indian War. Once fighting had subsided, the vast tracts of timber spurred the logging and tanning industries. Construction of a railroad just after the Civil War gave vacationers easy access to hotels and resorts, and Americans discovered the lure of nature to restore their lives.

Today, communities along the First Wilderness Corridor celebrate their shared history along this route into the heart of the Adirondack wilderness. Drive along the scenic byway, or paddle the river course to America's "First Wilderness."



WWW.FIRSTWILDERNESS.COM

Trail photo courtesy Doug Kilgus. Snowmobile photo courtesy Marissa Marking.



First Wilderness Trail Objectives

- ❖ **Create a standardized natural surface single-track trail within the FWHC which is publicly accessible for a majority of the year**
- ❖ Construct a designated trail for hiking and mountain biking
- ❖ **Provide views and access to the Hudson River and adjacent mountains**
- ❖ Provide wild river and forest experiences
- ❖ **Adhere to the principles of sustainable trails and use wilderness type concepts to limit the visual and environmental impact of trail work**
- ❖ Connect communities adjacent to the Hudson River
- ❖ **Utilize and connect to existing trail systems wherever feasible**

Trail Areas

9 Participating Trail Towns in 3 Counties

Saratoga County: 6 Miles

Village of Corinth – 0.5 miles

Town of Corinth – 5 miles

Town of Hadley – 0.5 miles

Warren County: 53 Miles

Town of Lake Luzerne – 9 miles

Town of Warrensburg – 20 miles

Town of Chester – 16 miles

Town of Johnsburg – 8 miles

Essex County: 30 Miles

Town of Minerva – 12 miles

Town of Newcomb – 18 miles

Trail Standards

- ❖ **Envisioned as a natural surface single-track wilderness type path within a 3- to 6-foot cleared opening**
- ❖ Surface to range from paved trails to woodland pathways
- ❖ **Use existing roadways and paths adjacent to the river**
- ❖ Many streets exceed sustainable trail grades and are therefore inappropriate for mountain biking and backcountry ski trails
- ❖ **Trail location is highly dependent on the environment**
- ❖ Implementation becomes an EVOLUTION OF OPPORTUNITY
- ❖ **Communities need to be actively engaged in trail building**

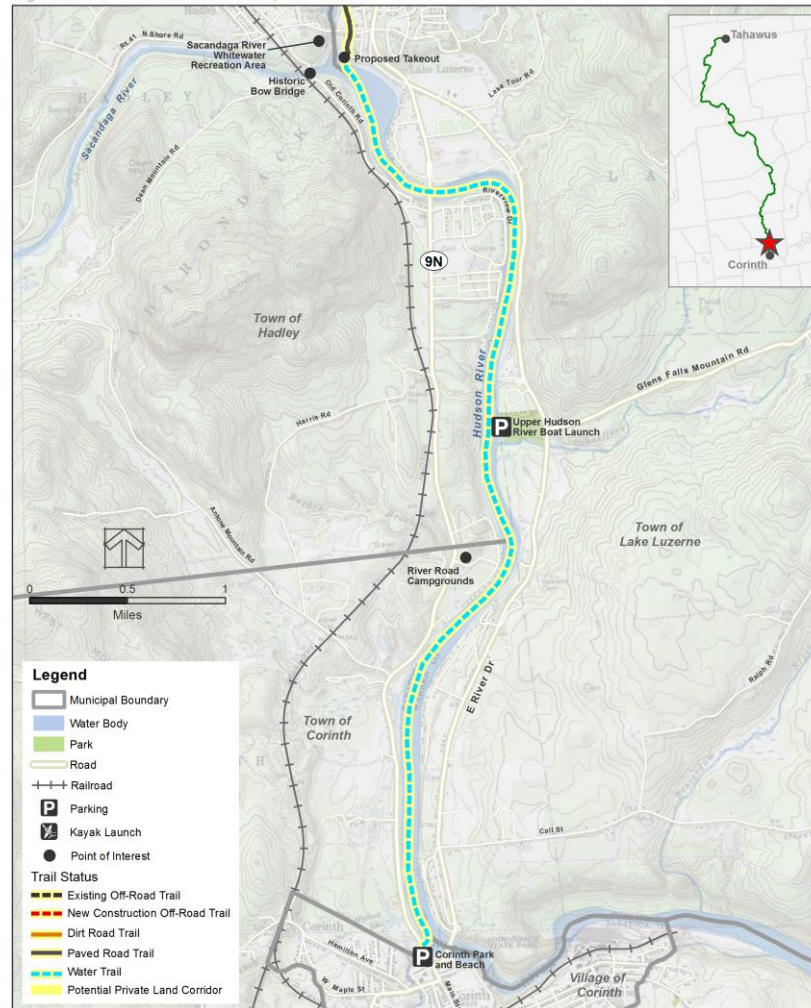
Trail Area 1

Town of Corinth to Town of Hadley/Lake Luzerne

FIRST WILDERNESS TRAIL

Trail Area 1: Town of Corinth to Town of Hadley/Lake Luzerne

Segment A: Corinth Park and Beach to Proposed Takeout



Trail Area 1

Town of Corinth to Town of Hadley/Lake Luzerne



Corinth Boat Launch



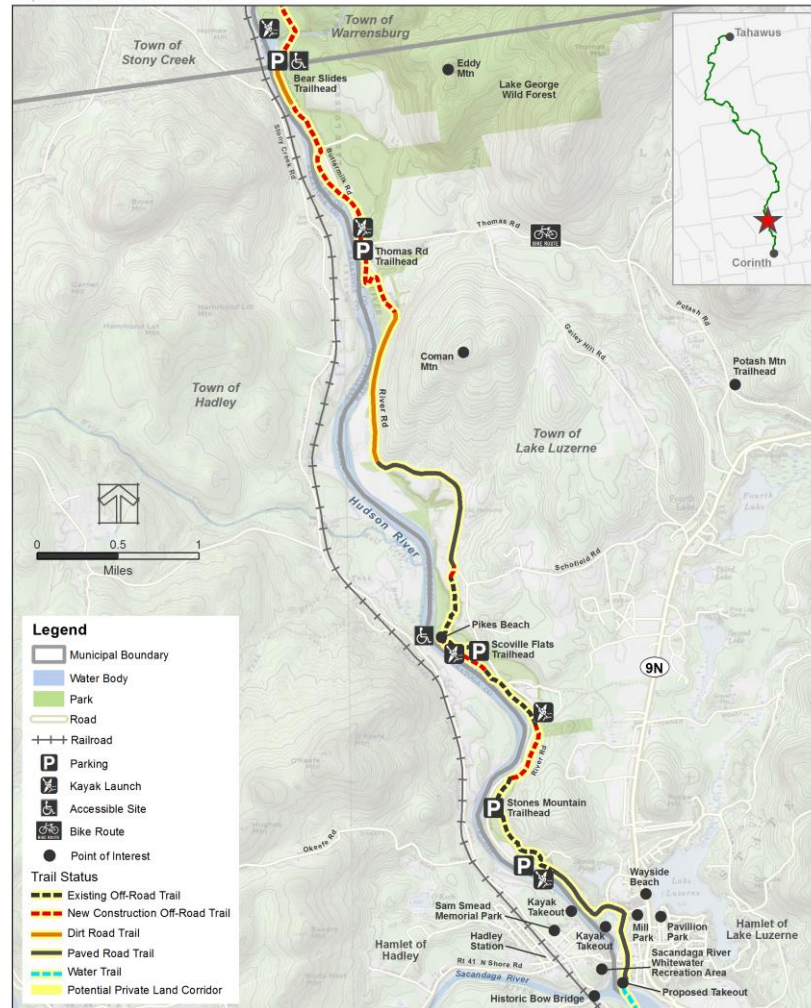
Upper Hudson River Boat Launch

Trail Area 2

Town of Hadley/Lake Luzerne to Town of Warrensburg

FIRST WILDERNESS TRAIL

Trail Area 2: Town of Hadley/Lake Luzerne to Town of Warrensburg
Proposed Takeout to Bear Slides Trailhead



Trail Area 2

Town of Hadley/Lake Luzerne to Town of Warrensburg



Eddy Mountain from River Road



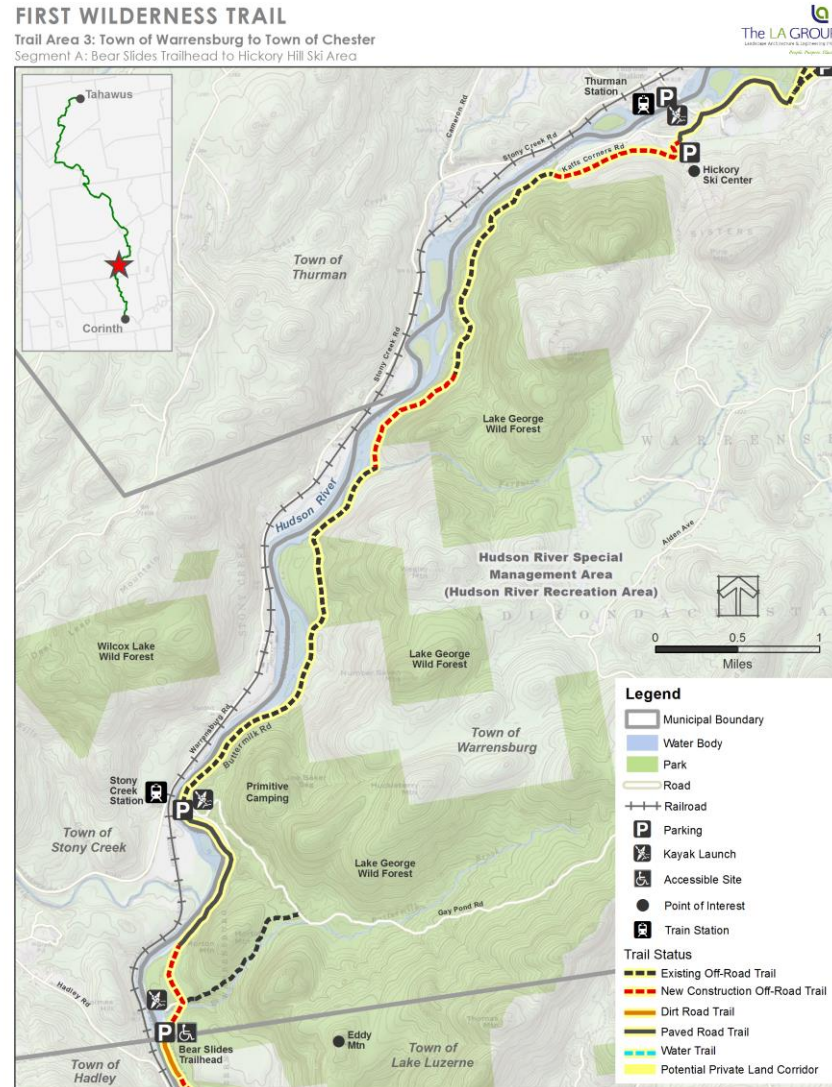
Hudson River at Luzerne
Recreation Area



View North on River Road

Trail Area 3 – Segment A

Town of Warrensburg to Town of Chester

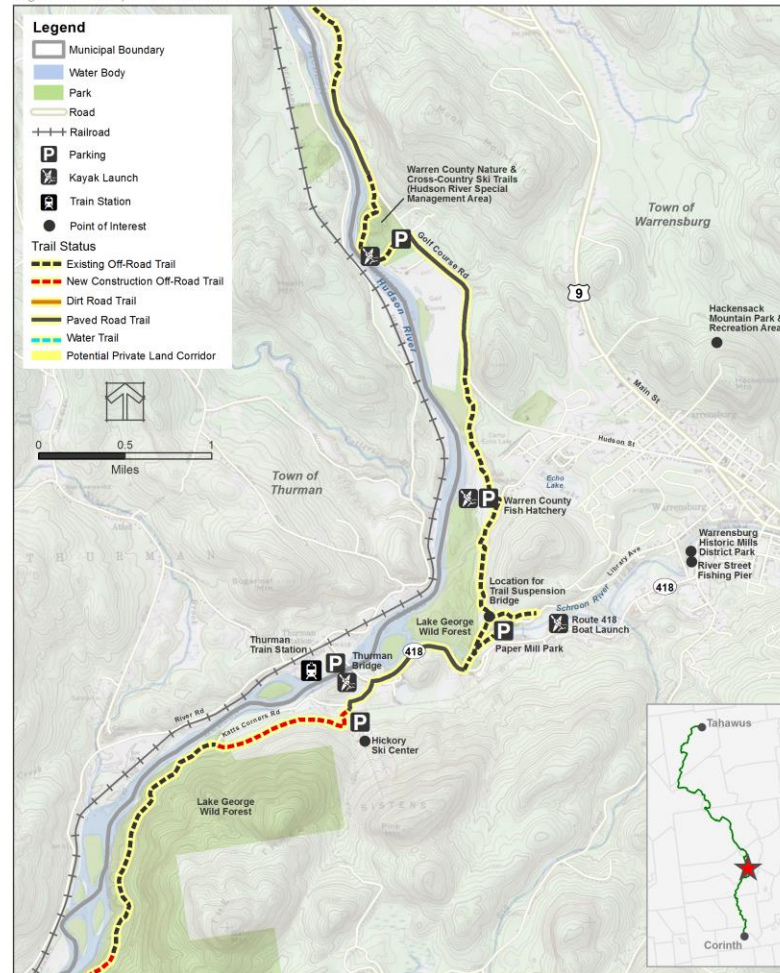


Trail Area 3 – Segment B

Town of Warrensburg to Town of Chester

FIRST WILDERNESS TRAIL

Trail Area 3: Town of Warrensburg to Town of Chester
Segment B: Hickory Hill Ski Area to Hudson River Nature Trails



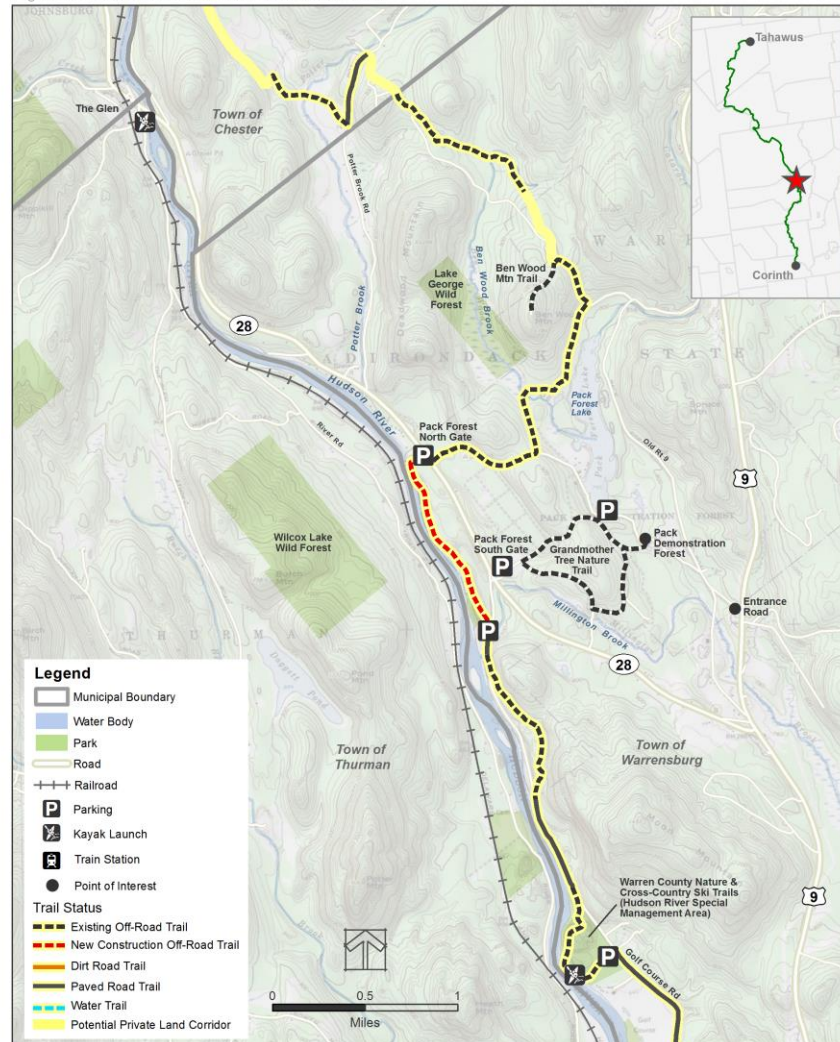
Trail Area 3 – Segment C

Town of Warrensburg to Town of Chester

FIRST WILDERNESS TRAIL

Trail Area 3: Town of Warrensburg to Town of Chester
Segment C: Hudson River Nature Trails to Potter Brook Road

The LA GROUP
LANDSCAPE ARCHITECTURE
PLANNING & DESIGN



Trail Area 3

Town of Warrensburg to Town of Chester



Schroon River Dam



Hudson River Ice Meadows



Pack Forest Trails

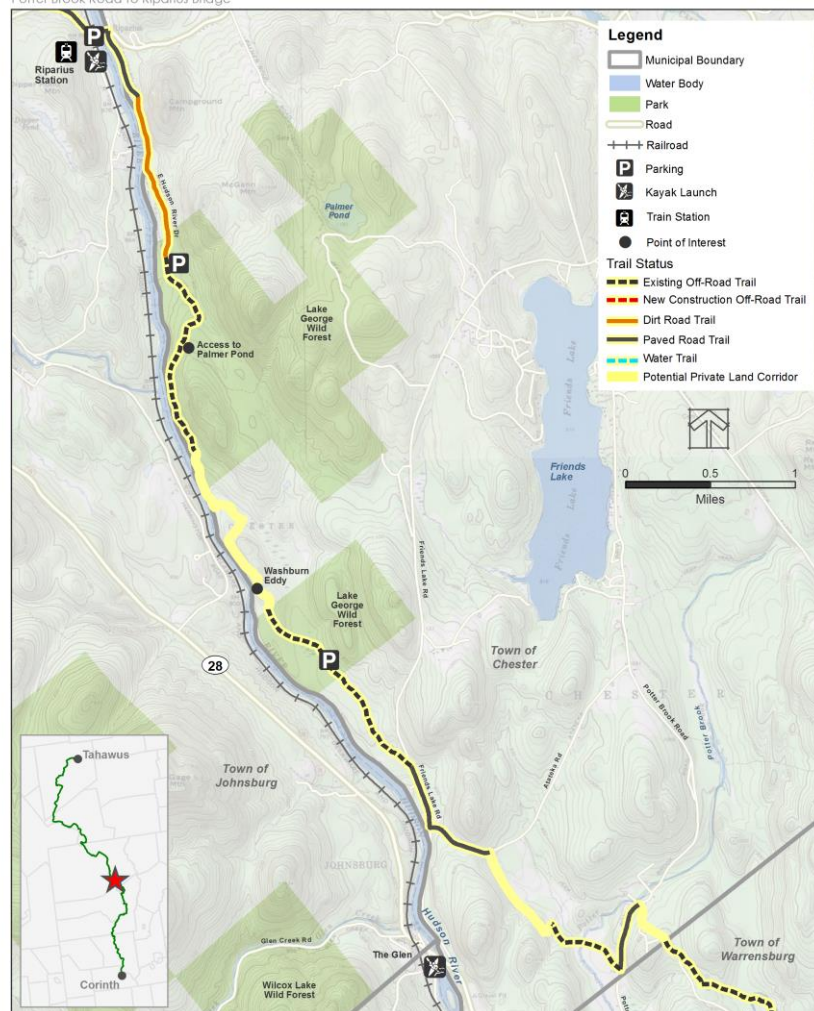
Trail Area 4

Town of Chester

FIRST WILDERNESS TRAIL

Trail Area 4: Town of Chester

Potter Brook Road to Riparius Bridge



Trail Area 4

Town of Chester



Lake George Wild Forest Trail



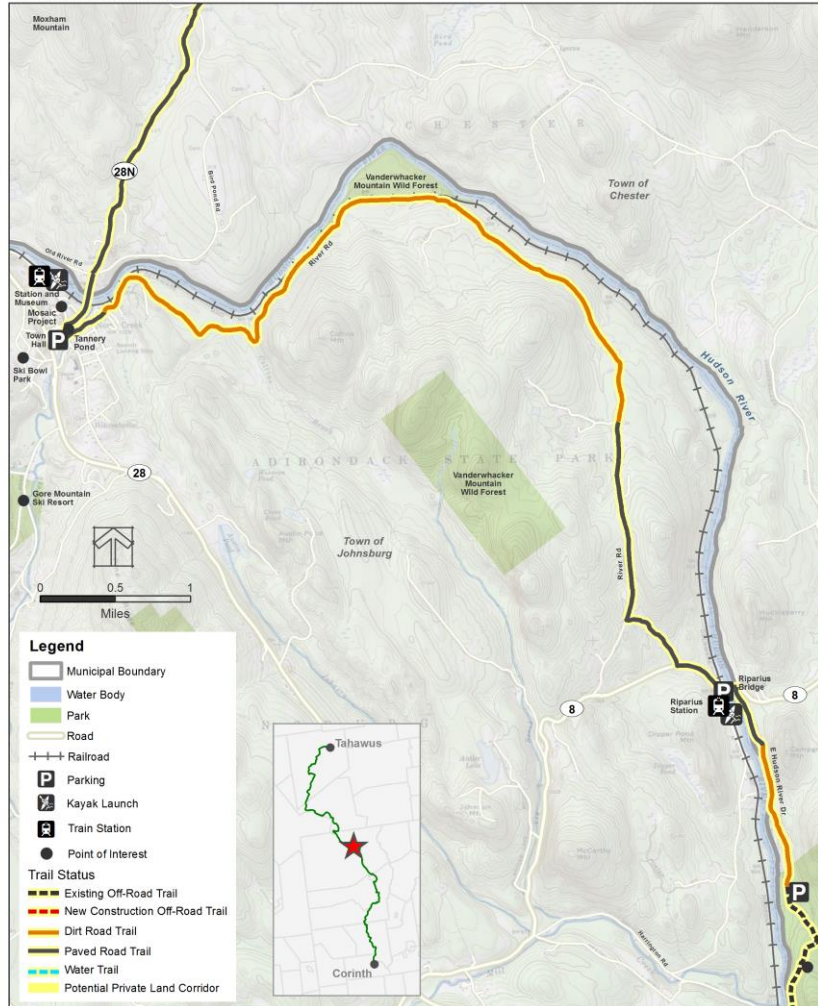
Hudson River by Riparius

Trail Area 5

Town of Johnsburg

FIRST WILDERNESS TRAIL

Trail Area 5: Town of Johnsbury
Riparius Bridge to Johnsbury Town Hall



Trail Area 5

Town of Johnsburg



Hudson River in North Creek



River Road



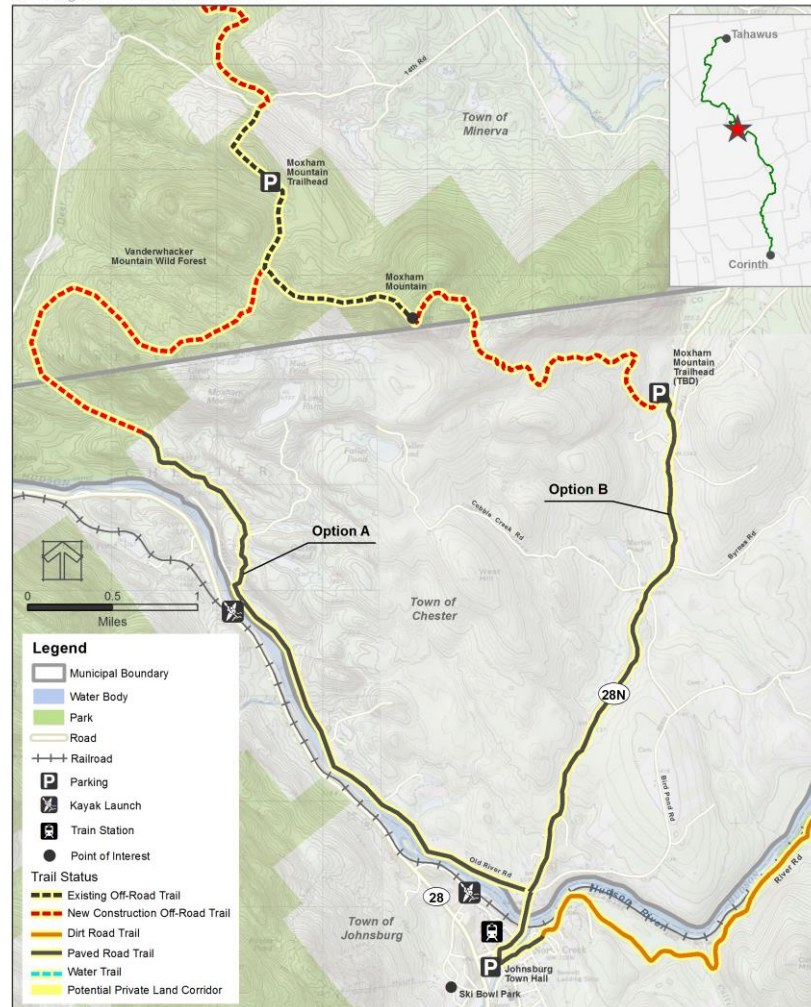
View West on the Riparius Bridge

Trail Area 6

Town of Chester to Town of Minerva

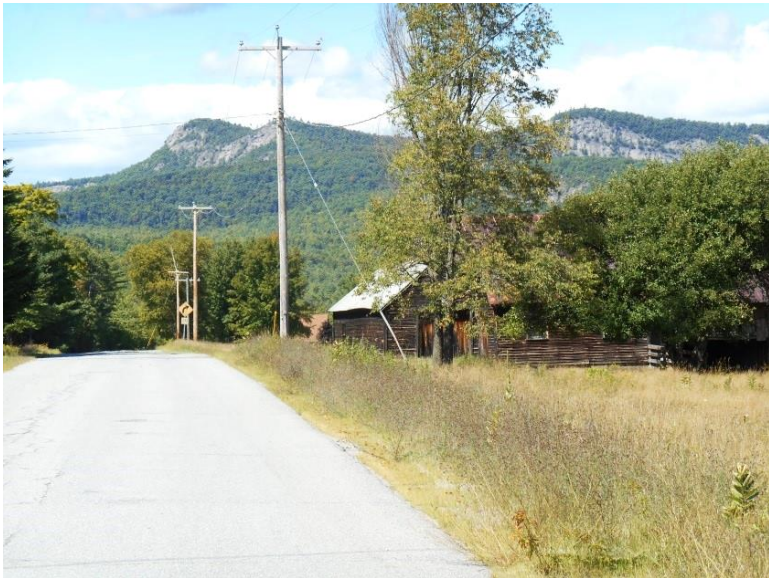
FIRST WILDERNESS TRAIL

Trail Area 6: Town of Chester to Town of Minerva
Johnsburg Town Hall to Moxham Mountain Trailhead



Trail Area 6

Town of Chester to Town of Minerva



View North on Cobble Creek Road



View from Moxham Mountain

Trail Area 7 – Segment A

Town of Minerva to Town of Newcomb

FIRST WILDERNESS TRAIL

Trail Area 7: Town of Minerva to Town of Newcomb

Segment A: Moxham Mountain Trailhead to Northwoods Club Road



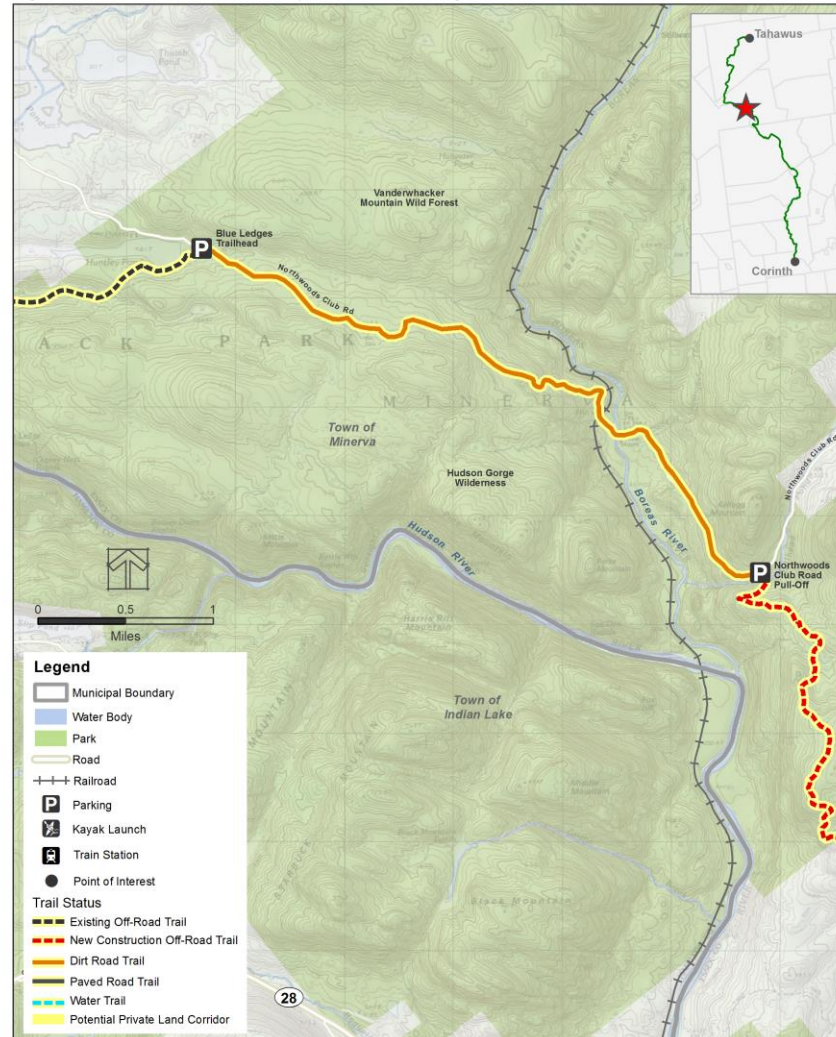
Trail Area 7 – Segment B

Town of Minerva to Town of Newcomb

FIRST WILDERNESS TRAIL

Trail Area 7: Town of Minerva to Town of Newcomb

Segment B: Northwoods Club Road to Huntley Pond and the Blue Ledges Trailhead



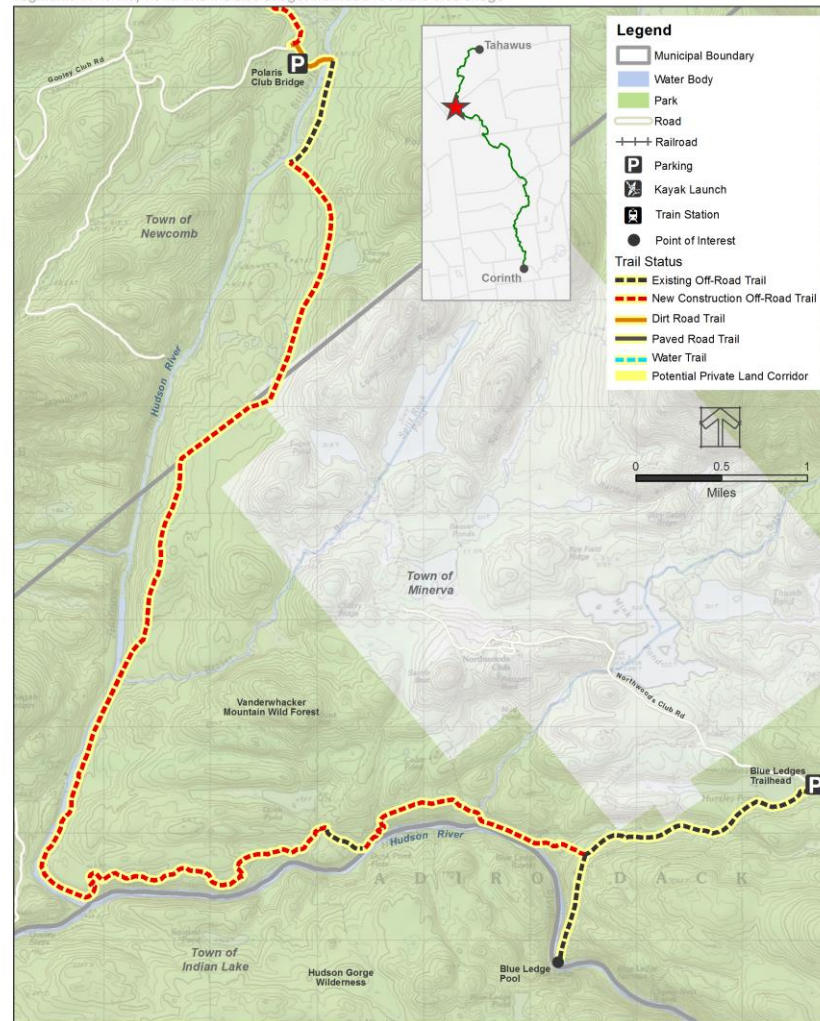
Trail Area 7 – Segment C

Town of Minerva to Town of Newcomb

FIRST WILDERNESS TRAIL

Trail Area 7: Town of Minerva to Town of Newcomb

Segments C: Huntley Pond and the Blue Ledges Trailhead to Polaris Club Bridge



Trail Area 7

Town of Minerva to Town of Newcomb



Hudson River at the Blue Ledges Trail



View of Vanderwhacker Mountain

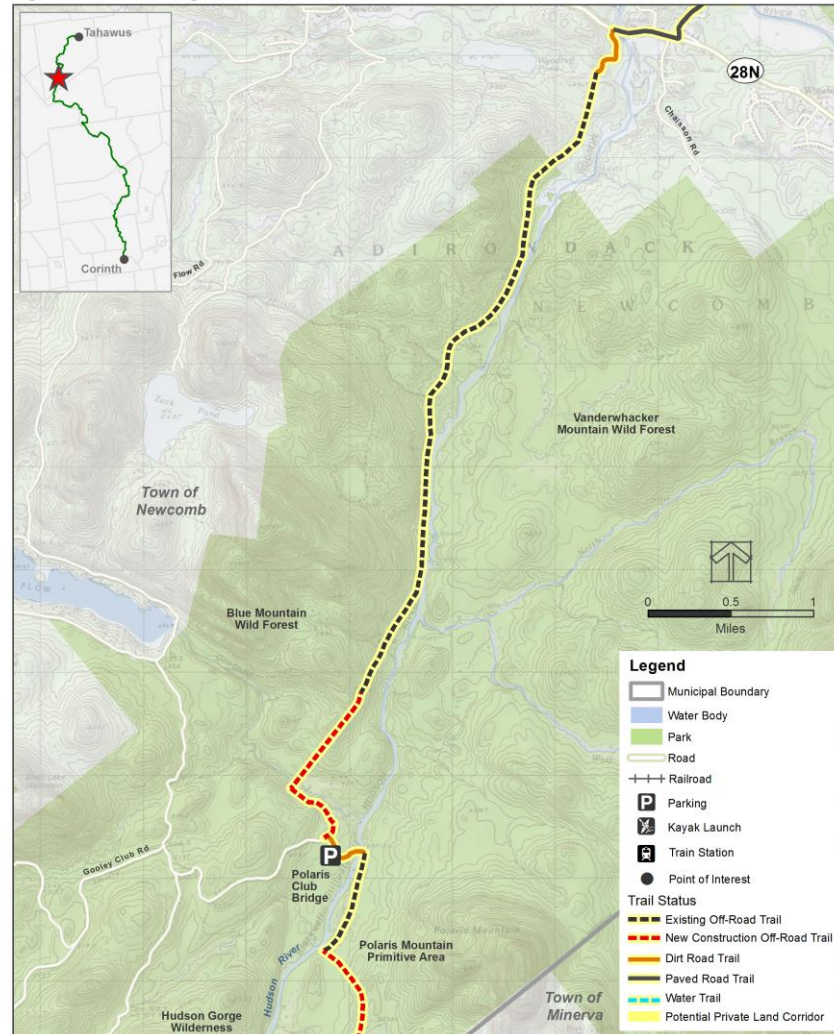
Trail Area 8 – Segment A

Town of Newcomb

FIRST WILDERNESS TRAIL

Trail Area 8: Town of Newcomb

Segment A: Polaris Club Bridge to State Route 28N



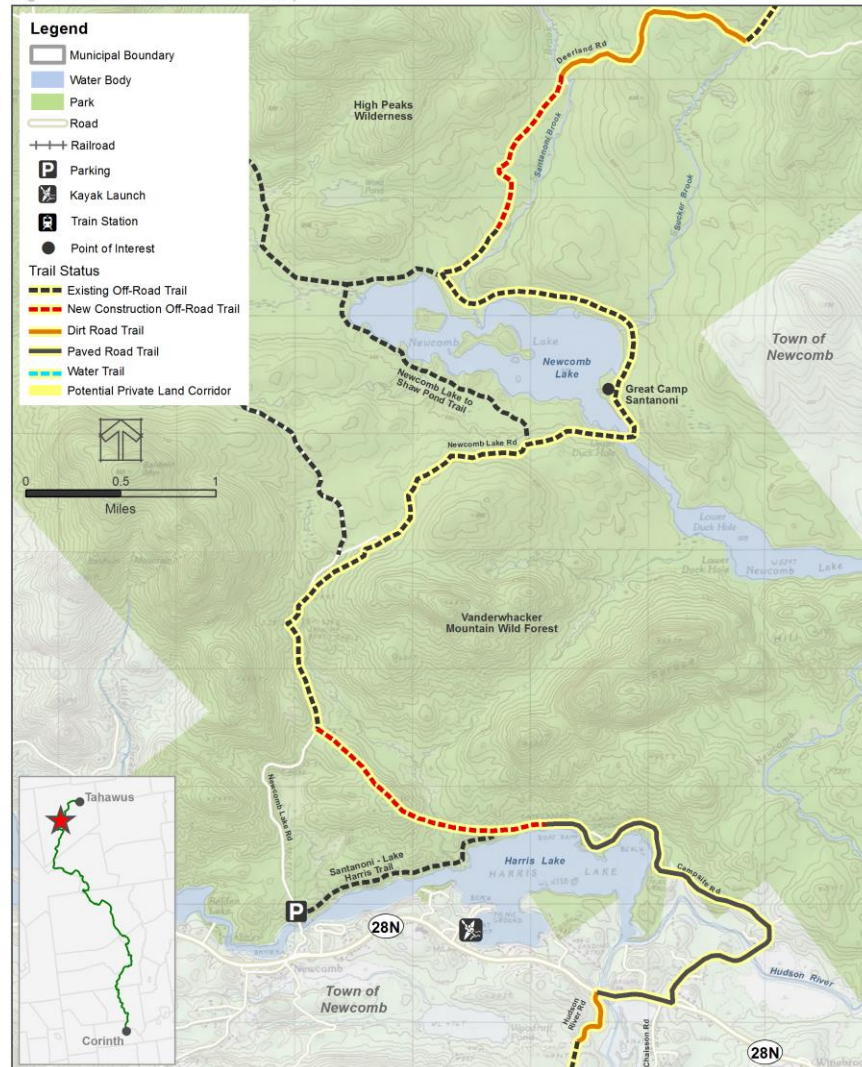
Trail Area 8 – Segment B

Town of Newcomb

FIRST WILDERNESS TRAIL

Trail Area 8: Town of Newcomb

Segment B: State Route 28N to Great Camp Santanoni



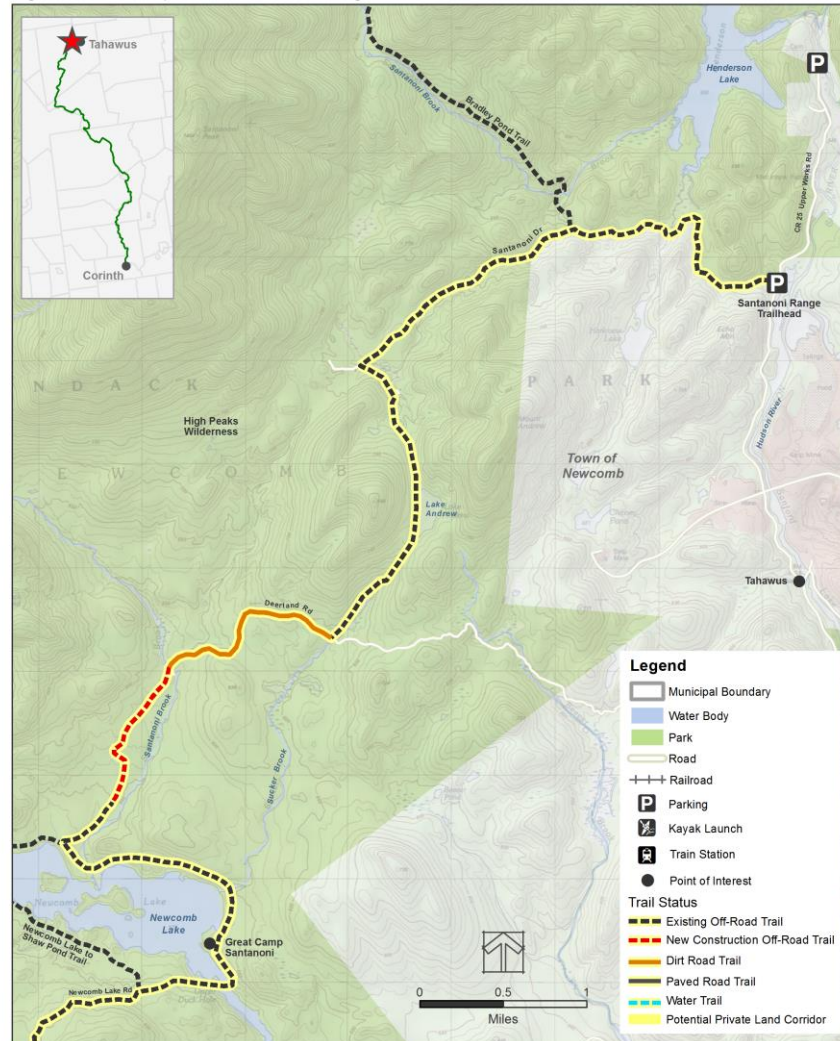
Trail Area 8 – Segment C

Town of Newcomb

FIRST WILDERNESS TRAIL

Trail Area 8: Town of Newcomb

Segment C: Great Camp Santanoni to Santanoni Range Trailhead



Trail Area 8

Town of Newcomb



Under the Polaris Club Bridge



Lake Andrew near Tahawus



Regional Trail Network

- Champlain Canalway Trail
- Feeder Canal Trail
- Empire State Trail
- Warren County Bikeway
- Northville-Placid Trail
- North Country National Scenic Trail



THANK YOU!

Contacts:

Tracey Clothier: The LA Group
tclothier@nycap.rr.com

Steve Ovitt: Wilderness Property Management
wildpropmang@gmail.com

Wayne LaMothe: Warren County Planning
lamothew@warrencountyny.gov