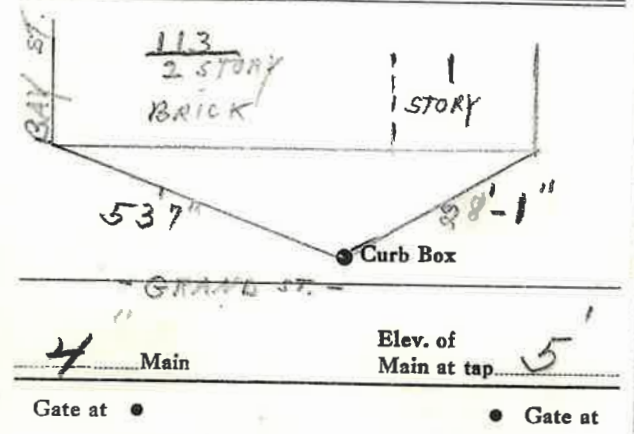


LABOR AND MATERIALS

1	Copper	} Connection	<u>3/4</u> "	\$	
	Lead			\$	
1	Curb	} Valve	<u>3/4</u> in.	\$	
				\$	
	T.S. & V.			\$	
1	Service box	} Short 3 1/2 x 4 1/2		\$	
	Old returned			} Long 4 1/2 x 5 1/2	\$
					} Buff or Rdway
20	Ft. <u>3/4</u> in.	} Copper	} Pipe at	\$	
				} C.I.	\$
					} C.I.
	Nipples	in. at		\$	
	Bushings	to in. at		\$	
	Red'g	} Coupl'gs	to in. at	\$	
	Inc'g			\$	
	Union	in. at		\$	
	Meter	in. at		\$	
	Lead Joints	at		\$	
	Compound Joints	at		\$	
	Maintenance Foreman			\$	
	Hrs. Water Maint. Man	1 at		\$	
	Hrs. Water Maint. Man	2 at		\$	
	Hrs. Garage Foreman	at		\$	
	Hrs. Labor	at		\$	
	Hrs. Compressor	at		\$	
	Compensation Ins. at \$	per C		\$	
	Trucking			\$	
	Pav't Patch			\$	
				\$	
				\$	
				\$	
	O'head			\$	
				\$	

BAY St. 113
 Ave. No. 113
 Name of Owner
 TAX ID # 302.16-17-32

Labor and Mat'l. Report 1950



4" Main Elev. of Main at tap 5'
 Gate at • Gate at •
 Tap-on GRAND ST. • Curb Box