

LABOR AND MATERIALS

1	Copper	Connection	3/4"	\$	2.71
1	Lead				
1	Curb	Cock Valve T. S. & V.	3/4 in.	\$	3.83
1	Service box	Short 3 1/2 x 4 1/2		\$	4.69
	Old returned	Long 4 1/2 x 5 1/2			
		Buff or Rdway			
13	Ft. 3/4 in.	Copper Pipe at	45	\$	5.85
		G.I.			
		C.I.			
	Nipples	in. at		\$	
	Bushings	to in. at		\$	
	Red'g				
	Inc'g	Coupl'gs to in. at		\$	
	Union	in. at		\$	
	Meter	in. at		\$	
	Lead Joints at			\$	2.93
	Compound Joints at			\$	
	Maintenance Foreman			\$	2.20
	Hrs. Water Maint. Man-1 at			\$	
3	Hrs. Water Maint. Man-2 at	12.4		\$	3.72
	Hrs. Garage Foreman at			\$	
17	Hrs. Labor at	1.13		\$	19.21
	Hrs. Compressor at			\$	
	Compensation Ins. at \$	4.29 per C		\$	98
	Trucking			\$	1.50
	Pav't Patch			\$	6.75
	Tap by Gifford			\$	
		12-1-55		\$	
	O'head			\$	
	Old Conn. during patch?			\$	49.24

Shut off at main: 42.49
 X 00 55.49

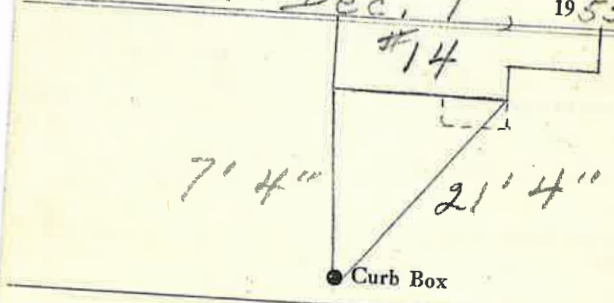
Birch

St. Pl. Ave. No. 14

Name of Owner

Casey

Labor and Mat'l. Report Dec. 1, 1955



4" Main

Elev. of Main at tap 7'

Gate at ●

● Gate at

TAX ID # 302.16-18-13

● Curb Box