

LABOR AND MATERIALS

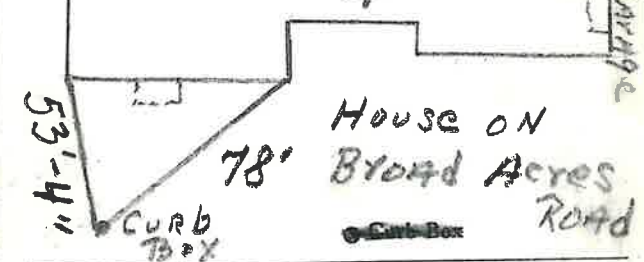
1	Copper	Connection	3/4"	\$
1	Curb	Cock Valve	3/4 in. (MARK II)	(OXISEN)
1	Service box	Short 3 1/2 x 1 1/2		\$
	Old returned	Long 4 1/2 x 5 1/2		\$
		Buff. or Redway		\$
30	Ft.	Copper	Pipe at	\$
	3/4 in.	3/4 in.		\$
		3/4 in.		\$
	Nipples	in. at		\$
	Bushings	to in. at		\$
	Red'g Inc'g	Coupl'gs to in. at		\$
	Union	in. at		\$
	Meter	in. at		\$
	Lead Joints	at		\$
	Compound Joints	at		\$
	Maintenance Foreman			\$
	Hrs. Water Maint. Man-1	at		\$
	Hrs. Water Maint. Man-2	at		\$
	Hrs. Garage Foreman	at		\$
	Hrs. Labor	at		\$
	Hrs. Compressor	at		\$
	Compensation Ins. at \$	per C		\$
	Trucking			\$
	Pav't Patch			\$
	TAP MADE BY ROCK			\$
	FOSMEY			\$
	MAY-7-1973			\$
	O'head			\$

30^{By City}
300' by Owner

Broad Acres Rd. Ave. No. 28

Name of Owner
Andrew Biondolilo

Labor and Mat'l. Report MAY 7 1973



Elev. of Main at tap 5'

Gate at • Gate at

● Curb Box
TAP ON 6" TRANSITE
MAIN ON QUEENSBURY?
NEAR END OF MAIN