

LABOR AND MATERIALS

1	Copper Lead	Connection	3/4"	\$
1	Curb	Cock Valve T.S. & V.	3/4" Oriseal	\$
1	Service box	Short 3 1/2 x 4 1/2	1' Exten.	\$
Old returned	Long 4 1/2 x 5 1/2	Buff. or Rdway		
30	Ft.	3/4 in.	Copper G.I. G.I.	Pipe at \$
	Nipples	in.	at	\$
	Bushings	to	in.	at \$
	Red'g Inc'g	Coupl'gs	to in.	at \$
	Union	in.	at	\$
	Meter	in.	at	\$
	Lead Joints	at		\$
	Compound Joints	at		\$
	Maintenance Foreman			\$
	Hrs. Water Maint. Man	1 at		\$
	Hrs. Water Maint. Man	2 at		\$
	Hrs. Garage Foreman	at		\$
	Hrs. Labor	at		\$
	Hrs. Compressor	at		\$
	Compensation Ins.	at \$	per C	\$
	Trucking			\$
	Pay't Patch			\$
	Tap by Gifford & Co.			\$
		10-1-64		\$
	O'head			\$

Lot-8

Rd.
St.
Pt.

Broad Acres

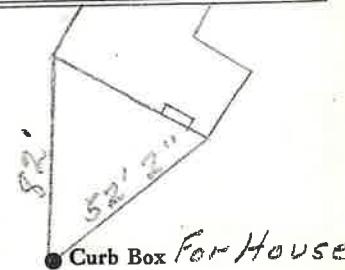
Ave. No. 39

Name of Owner

Jack Burrell

Labor and Mat'l. Report

Oct 29 1964



Transite - Hughes Ct.

6" Main

Elev. of Main at tap 5'

Gate at

Gate at

Tap on Hughes Ct.

Near End of main.

Curb Box For Thawing cable.

1964.

For #39

Broad Acres Rd.

19

LSM-5C-3-10-61

The wire cable measured from 70

Hughes Ct. # 20