

LABOR AND MATERIALS

1	Copper Lead	} Connection	3/4		\$ 1.35
1	Curb	{ Cock Valve T. S. & V.	3/4	in.	\$ 1.80
1	Service Box Old returned	{ Short 3 1/2 x 4 1/2 Long 4 1/2 x 5 1/2 Buffer Rdway			\$ 1.70
25	Ft.	3/4	in.	{ Copper Galv Iron Cast Iron	} Pipe at \$ 4.50
	Nipples	in.	at		\$
	Bushings	to	in.	at	\$
	Red'g Inc'g	{ Couplings	to	in.	at \$
	Union	in.	at		\$
	Meter	in.	at		\$
	Lead Joints	at			\$
	Leadite Joints	at			\$
	Hrs. Foreman	at			\$
3	Hrs. Chauffeur	at	6 1/2		\$ 1.80
8	Hrs. Tapper	at	"		\$ 5.00
8	Hrs. Labor	at	45		\$ 3.60
	Hrs. Labor	at			\$
	Hrs. Compressor	at			\$
	Compensation Ins.				\$ 33
	Trucking				\$
	Builders Use of Water	Patch			\$ 5
	Tap by Hesse!				\$
					\$
					\$
					\$
					\$
					\$ 26.16

123 1941

St.

69

Pl.

Ave. No.

57

Cherry

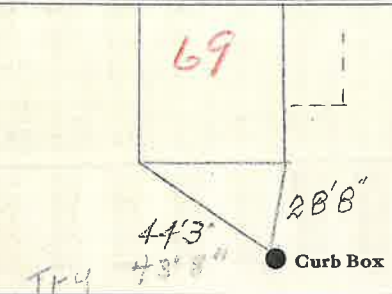
Name of Owner

Pat Donovan

Labor and Mat'l. Report

Oct 20

1941



4" Main

Elev. of

Main at tap

6"

Gate at ●

● Gate at

● Curb Box

H.