

### LABOR AND MATERIALS

1	Copper	Connection	3/4		
	Lead				\$ 2.87
1	Curb	Cock Valve	3/4	in.	\$ 3.62
		T. S. & V.			
1	Service box	Short 3/2 X 4 1/2			
	Old returned	Long 4 1/2 X 5 1/2			\$ 4.68
		Buff or Rdway			
10	Ft.	Copper	3/4	in.	
		C.I.			
		Pipe at	32		\$ 3.20
	Nipples	in. at			\$
	Bushings	to in. at			\$
	Red'g				\$
	Inc'g	Coupl'gs to in. at			\$
	Union	in. at			\$
	Meter	in. at			\$
	Lead Joints	at			\$
	Compound Joints	at			\$
5	Hrs. Water Maint. Man-1	at			\$
	Hrs. Water Maint. Man-2	at	1.12		\$ 5.60
1.4	Hrs. Labor-	at	91		\$ 12.74
	Hrs. Labor-	at			\$
2	Hrs. Compressor at		1.20		\$ 2.40
	Compensation Ins. at	\$ 2.18 per C.			\$ 1.45
	Trucking				\$ 2.00
	Pav't Patch				\$ 10.25
	<i>Tap &amp; Mfg</i>				\$
	O'head				\$
					\$ 47.81

95

Chester

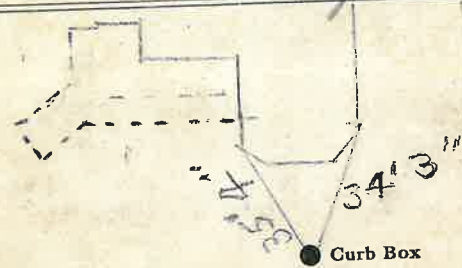
St. \_\_\_\_\_  
 Ph. \_\_\_\_\_  
 Ave. No. 18

Name of Owner

Alex Sherdell

Labor and Mat'l. Report

Sept 6 1949



10 Main

Elev. of Main at tap 8

Gate at ●

● Gate at

● Curb Box