

LABOR AND MATERIALS

Copper	} Connection	\$
Lead		\$
Curb	} Cock Valve T. S. & V. in.	\$
Service Box		} Short 3 1/2 x 4 1/2 Long 4 1/2 x 5 1/2 Buff for Rdway
Old returned			
3' 4' Ft.	} Copper Galv Iron Cast Iron	Pipe at	\$
1 3/4 in.			
Nipples in. at		\$
Bushings to in. at		\$
Red'g Inc'g	} Couplings 1" to 3/4" in. at	\$
Union	 in. at	\$
Meter in. at		\$
Lead Joints at		\$
Leadite Joints at		\$
Hrs. Foreman at		\$
Hrs. Chauffeur at		\$
Hrs. Tapper at		\$
Hrs. Labor at		\$
Hrs. Labor at		\$
Hrs. Compressor at		\$
Compensation Ins.		\$
Trucking		\$
Builders Use of Water		\$
Tap by Miller & Hessel		\$
		\$
		\$
		\$

Clayton

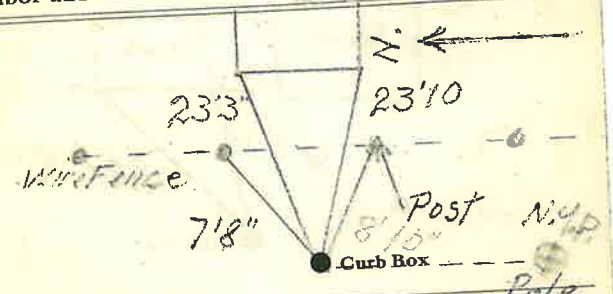
St. Pl. Ave. No. Ball Park

Name of Owner

Calons Falls Dept of School

Labor and Mat'l. Report

June 2 1941



6" C.I. Main
Elev. of Main at tap 5'4"

Gate at ● Gate at ●
● Curb Box