

LABOR AND MATERIALS

Copper / Lead	Connection		\$	
24	Curb	Cock Valve T. S. & V. { 3/4 in.	3.71	\$ 7.42
1	Service box Old returned	Short 3/2 X 4 1/2 } Long 4 1/2 X 5 1/2 } Buff or Rdway		\$ 5.90
26	Ft. 3/4 in.	Copper G. I. } Pipe at 30		\$ 7.80
1	Nipples	1 in. at Tee Sweet		
1	Bushings	to in. at		\$
1	Red'g Incl'g Coupl'gs	to in. at Tee Sweet		\$.37
1	Union Tee	in. at Tee Sweet		
	Meter	in. at		\$
	Lead Joints	at		\$
	Compound Joints	at		\$
	Hrs. Water Maint. Man-1	at		\$
6	Hrs. Water Maint. Man-2	at 91		\$ 5.46 4/6
5	Hrs. Labor-	at 80		\$ 4.00 2/4
	Hrs. Labor-	at		\$
	Hrs. Compressor	at		\$
	Compensation Ins.	at \$ per C		\$ 21
	Trucking			\$ 1.00
	Pav't Patch			\$
	Tee by Miller			\$
	1/2" Copper Fitting			\$
	O'head			\$
				\$ 32.72

115

Clayton
Avenue

St.

Pt.

Ave. No.

25

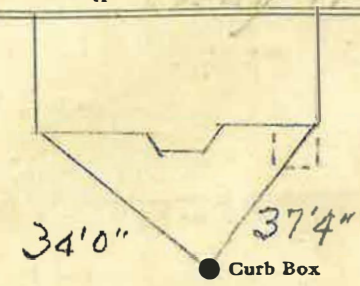
Name of Owner

Hammond

Labor and Mat'l. Report

Aug 11

1916



6" x

Main

Elev. of Main at tap

5' x

Gate at ●

● Gate at

TAX ID # 302.19-3-6

● Curb Box