

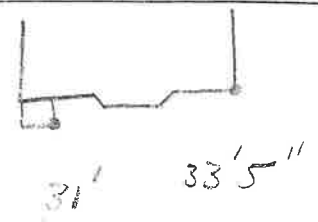
LABOR AND MATERIALS

1	Copper	}	Connection	3/4		\$
	Lead					
1	Curb	}	Cock Valve	3/4 in.		\$
			T.S. & V.			
1	Service box	}	Short 3 1/2 x 4 1/2			
	Old returned		Long 4 1/2 x 5 1/2			
11	Ft.	}	Copper			
	3/4 in.		C.I.	Pipe at		
			C.I.			
	Nipples		in. at			\$
	Bushings		to in. at			\$
	Red'g	}	Coupl'gs	to in. at		\$
	Inc'g					
	Union		in. at			\$
	Meter		in. at			\$
	Compound Joints		at			\$
	Maintenance Foreman					\$
	Hrs. Water Maint. Man-1		at			\$
	Hrs. Water Maint. Man-2		at			\$
	Hrs. Garage Foreman		at			\$
	Hrs. Labor		at			\$
	Hrs. Compressor		at			\$
	Trucking					\$
	Pav't Patch					\$
						\$
						\$
						\$
						\$
						\$

~~St.~~
~~Pl.~~
 Ave. No. 29

COOLIDGE
 Name of Owner
 DR. B.F. HAMMOND

Labor and Mat'l. Report JUNE 23 1937



● Curb Box

6" Main Elev. of Main at tap 5'
 Gate at ● ● Gate at

● Curb Box

OLD TAP SHUTOFF