

104-1750

Coolidge

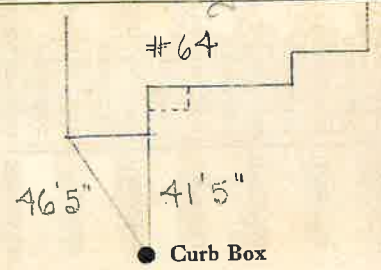
St. PT. Ave. No. 64

Name of Owner

Gold

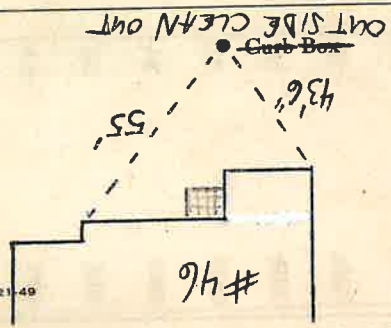
Labor and Mat'l. Report

July 14 19 50



6" Main Elev. of Main at tap 63'

Gate at ● Gate at ●



LSM-5C 10-21-49

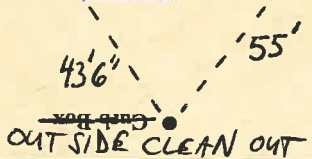
LABOR AND MATERIALS

1	Copper Lead	Connection	3/4"	\$	2.29
1	Curb	Cock Valve F.S. & V.	3/4 in.	\$	2.70
1	Service box Old returned	Short 3 1/2 x 4 1/2 Long 4 1/2 x 5 1/2 Buff or Rdway		\$	4.25
7	Ft. 3/4 in.	Copper G.I. C.I.	Pipe at 35	\$	2.45
	Nipples	in. at		\$	
	Bushings	to in. at		\$	
	Red'g Inc'g	Coupl'gs to in. at		\$	
	Union	in. at		\$	
	Meter	in. at		\$	
	Lead Joints at			\$	
	Compound Joints at			\$	
	Hrs. Water Maint. Man-1	at		\$	
2	Hrs. Water Maint. Man-2	at	1.02	\$	2.04
4	Hrs. Labor	at	91	\$	3.64
	Hrs. Labor	at		\$	
	Hrs. Compressor at			\$	
	Compensation Ins. at \$	per C.		\$	1.13
	Trucking			\$	1.00
	Pav't Patch			\$	6.75
	O'head			\$	
				\$	25.25

64

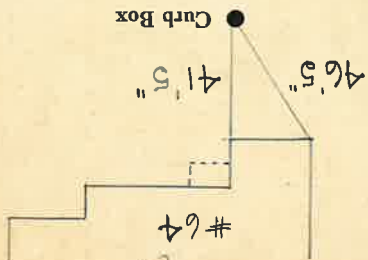
LSM-5C 10-21-49

#46



Gate at ● Gate at ●

6" Main Elev. of Main at tap 5'



Labor and Mat'l. Report July 14 1950

Gold

Name of Owner

St # Ave. No. 64

Geolidge

10-1-1950