

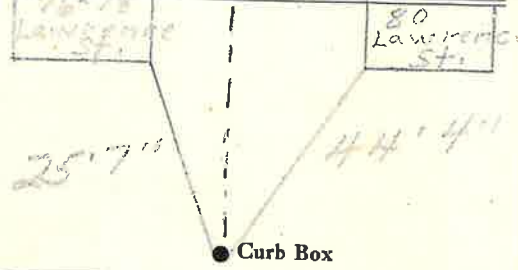
LABOR AND MATERIALS

Copper	} Connection		\$
Lead			
1 Curb	} 12" x 10"	Coek	\$
		Valve	\$
		T. S. & V.	\$
1 Service box	} Short 3 1/2 x 4 1/2		\$
Old returned		Long 4 1/2 x 5 1/2	\$
		Buff. or Rdway	\$
9 Ft. 10 in.	} Pipe at	Copper	\$
		C. I.	\$
Nipples	in. at		\$
Bushings	to in. at		\$
Red'g	} Coupl'gs. to in. at		\$
Inc'g			\$
Union	in. at		\$
Meter	in. at		\$
Lead Joints at			\$
Compound Joints at			\$
Maintenance Foreman			\$
Hrs. Water Maint. Man-1 at			\$
Hrs. Water Maint. Man-2 at			\$
Hrs. Garage Foreman at			\$
Hrs. Labor- at			\$
Hrs. Compressor at			\$
Compensation Ins. at \$ per C			\$
Trucking			\$
Pav't Patch			\$
2 - 12" Lead Joints			\$
1 - 10" "			\$
60-lbs. "			\$
O'head			\$

St. Pl. Ave. No. 41

Name of Owner
Tuxton Mfg. Co.

Labor and Mat'l. Report Oct. 5 1959



12" Main Elev. of Main at tap
Gate at • Gate at

● Curb Box
Tap for Sprinkler System on Lawrence St.

LABOR AND MATERIALS

4" Dresser Sleeve
 1 Copper Connection style 80 \$
 1 Lead }
 1 Wheel }
 Curb } Coek Valve } 2 in. \$
 T.S. & V. }
 1 Service box { Short 3 1/2 x 4 1/2 }
 Old returned { Long 4 1/2 x 5 1/2 }
 Buff or Rdway } \$
 10 Ft. 2 in. { Copper } Pipe at \$
 { G. I. }
 { G. I. }
 4 Nipples 2 in. at 2-6" - 2-4" \$
 Bushings to in. at \$
 3 Red'g } Elbows }
 Inc'g } Coupl'gs 90 to 2 in. at \$
 Union in. at \$
 Meter in. at \$
 Lead Joints at \$
 Compound Joints at \$
 Maintenance Foreman \$
 Hrs. Water Maint. Man-1 at \$
 Hrs. Water Maint. Man-2 at \$
 Hrs. Garage Foreman at \$
 Hrs. Labor at \$
 Hrs. Compressor at \$
 Compensation Ins. at \$ per C \$
 Trucking \$
 Pay't Patch \$
 1- 2" Galv Tee \$
 1- 2" " Street-L \$
 4" Cut A.P. Smith Team Machine \$
 O'head Top made by \$
 Bureau & Old Service \$
 Disconnected \$
 Aug 14 57

Cooper St. No. 41
 Name of Owner
 Tuxton Manufacturing Corp.
 Labor and Mat'l. Report Aug 14 1957
 Wheel Valve 8" 6"
 Road man
 Gate box Stock
 Boiler Room
 BRAZED
 1988
 ● Curb Box
 4" Main Elev. of Main at tap 6'
 Gate at ● Gate at
 ● Curb Box
 LSM-50-2-5 56