

LABOR AND MATERIALS

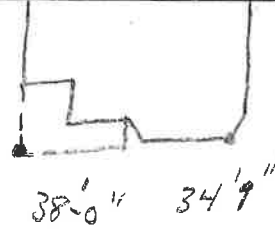
1	Copper Lead	Connection	$\frac{3}{4}$	\$	_____
1	Curb	Cock Valve T.S. & V.	$\frac{3}{4}$ in.	\$	_____
1	Service box Old returned	Short $3\frac{1}{2} \times 4\frac{1}{2}$ Long $4\frac{1}{2} \times 5\frac{1}{2}$		\$	_____
38	Ft. $\frac{3}{4}$ in.	Copper Pipe at		\$	_____
	Nipples	in. at		\$	_____
	Bushings	to in. at		\$	_____
	Red'g Inc'g	Coupl'gs. to in. at		\$	_____
	Union	in. at		\$	_____
	Meter	in. at		\$	_____
	Compound Joints	at		\$	_____
	Maintenance Foreman			\$	_____
	Hrs. Water Maint. Man	—1 at		\$	_____
	Hrs. Water Maint. Man	—2 at		\$	_____
	Hrs. Garage Foreman	at		\$	_____
	Hrs. Labor	at		\$	_____
	Hrs. Compressor	at		\$	_____
	Trucking			\$	_____
	Pav't Patch			\$	_____
				\$	_____
				\$	_____
				\$	_____
				\$	_____
				\$	_____

DIX

Ave. No. 182

Name of Owner

Labor and Mat'l. Report - JUNE 11 1934



● Curb Box

6" Main

Elev. of Main at tap 4'

Gate at ●

● Gate at

● Curb Box

NEW TAP OLD HOUSE
OLD TAP TO BE DUG UP

Labor and Materials

Copper } Connection.....	\$.....
Lead }	\$.....
Curb { Cock }	in. \$.....
{ Valve }	in. \$.....
{ T. S. & V. }	in. \$.....
Service Box { Short 3 1/2 x 4 1/2 }	\$.....
Old returned { Long 4 1/2 x 5 1/2 }	\$.....
{ Buff. or Rdway }	\$.....
Ft. 3/4 in. { Copper } Pipe at.....	\$.....
{ Galv. Iron }	\$.....
{ Cast Iron }	\$.....
Nipples..... in. at.....	\$.....
Bushings..... to..... in. at.....	\$.....
Red'g } Couplings..... to..... in. at.....	\$.....
Inc'g }	\$.....
Union..... in. at.....	\$.....
Meter..... in. at.....	\$.....
Lbs. Br. Stone at.....	\$.....
Lbs. Sand at.....	\$.....
Bags Cement at.....	\$.....
Paving Brick { Mack } at.....	\$.....
{ Red }	\$.....
{ Asphalt }	\$.....
Lead Joints at.....	\$.....
Leadite Joints at.....	\$.....
Hrs. Foreman at.....	\$.....
Hrs. Common Labor at.....	\$.....
Hrs. Common Labor at.....	\$.....
Hrs. Mason at.....	\$.....
Hrs. Mason's Helper at.....	\$.....
Hrs. Compressor at.....	\$.....
Compensation Ins.....	\$.....
Trucking.....	\$.....
Builders' Use of Water.....	\$.....
Total \$.....	

Lower Dix Ave.
 Labor and Material Report Sept. 22 1970

City of Glen Falls.
 Sewer Pumping Sta.

