

LABOR AND MATERIALS

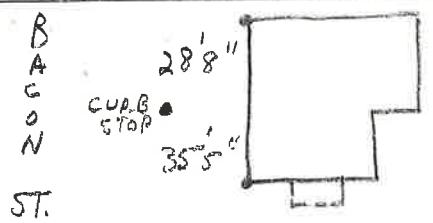
1	Copper Lead	Connection	$\frac{3}{4}$	\$
1	Curb	Cock Valve T.S. & W.	$\frac{3}{4}$ in.	\$
1	Service box Old returned	Short $3\frac{1}{2} \times 4\frac{1}{2}$ Long $4\frac{1}{2} \times 5\frac{1}{2}$		\$
9	Ft. $\frac{3}{4}$ in.	Copper Pipe		\$
	Nipples	in. at		\$
1	Bushings	$\frac{1}{2}$ to 20 in. at		\$
	Red'g Inc'g	Coupl'gs	to in. at	\$
	Union	in. at		\$
	Meter	in. at		\$
	Compound Joints	at		\$
	Maintenance Foreman			\$
	Hrs. Water Maint. Man-1	at		\$
	Hrs. Water Maint. Man-2	at		\$
	Hrs. Garage Foreman	at		\$
	Hrs. Labor	at		\$
	Hrs. Compressor	at		\$
	Trucking			\$
	Pav't Patch			\$
				\$
				\$
				\$
				\$

ELM

St. No. 55

Name of Owner

Labor and Mat'l. Report MAY 17 1932



6" Main

Elev. of Main at tap $4\frac{1}{2}'$

Gate at • Gate at •

• Curb Box

TAP ON BACON