

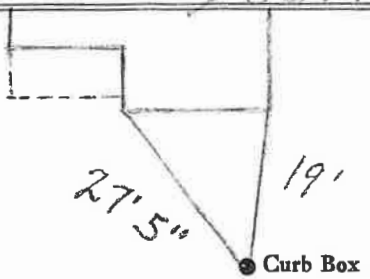
LABOR AND MATERIALS

1	Copper Lead	Connection	3/4"	\$
1	Curb	Cock Valve T.S. & V.	in.	\$
1	Service box Old returned	Short 3 1/2 x 4 1/2 Long 4 1/2 x 5 1/2 Buff or Rdway		\$
25	Ft. 3/4 in.	Copper G.I. C.I.	Pipe at	\$
	Nipples	in. at		\$
	Bushings	to in. at		\$
	Red'g Inc'g	Coupl'gs to in. at		\$
	Union	in. at		\$
	Meter	in. at		\$
	Lead Joints	at		\$
	Compound Joints	at		\$
	Maintenance Foreman			\$
	Hrs. Water Maint. Man-1	at		\$
	Hrs. Water Maint. Man-2	at		\$
	Hrs. Garage Foreman	at		\$
	Hrs. Labor	at		\$
	Hrs. Compressor	at		\$
	Compensation Ins. at \$	per C		\$
	Trucking			\$
	Pav't Patch			\$
	Tap by <i>Renovon & Co.</i>			\$
	<i>12-14-67.</i>			\$
	O'head			\$

Gape St. Ave. No. *24*

Name of Owner *Hodgins*

Labor and Mat'l. Report *Dec. 14 1967.*



4" Main Elev. of Main at tap *5'*

Gate at • Gate at •

TAX ID # 302.16-11-4

• Curb Box