

LABOR AND MATERIALS

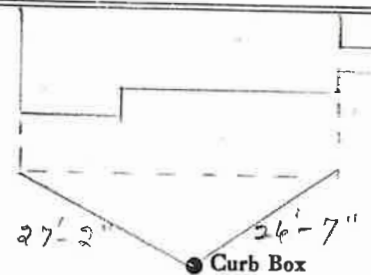
1	Copper	}	Connection $\frac{3}{4}$		\$
	Lead	}			
1	Curb	}	Cock Valve T.S. & V. } $\frac{3}{4}$ in.		\$
1	Service box	}	Short $3\frac{1}{2} \times 4\frac{1}{2}$		
	Old returned	}	Long $4\frac{1}{2} \times 5\frac{1}{2}$		
		}	Built or Rdway		\$
18	Ft. $\frac{3}{4}$ in.	}	Copper G.I. G.I.	Pipe at	\$
	Nipples		in.	at	\$
	Bushings		to	in. at	\$
	Red'g	}	Coupl'gs	to in. at	\$
	Ino'g	}			
	Union		in.	at	\$
	Meter		in.	at	\$
	Lead Joints			at	\$
	Compound Joints			at	\$
	Maintenance Foreman				\$
	Hrs. Water Maint. Man—1		at		\$
	Hrs. Water Maint. Man—2		at		\$
	Hrs. Garage Foreman		at		\$
	Hrs. Labor—		at		\$
	Hrs. Compressor		at		\$
	Compensation Ins. at \$		per C		\$
	Trucking				\$
	Pav't Patch				\$
					\$
					\$
					\$
	O'head				\$
					\$

St.
Pl.
Ave. No. 171

BAY

Name of Owner
TAX ID # 302.12-26-8

Labor and Mat'l. Report 19



6" Main Elev. of Main at tap 5'

Gate at ● ● Gate at

● Curb Box