

LABOR AND MATERIALS

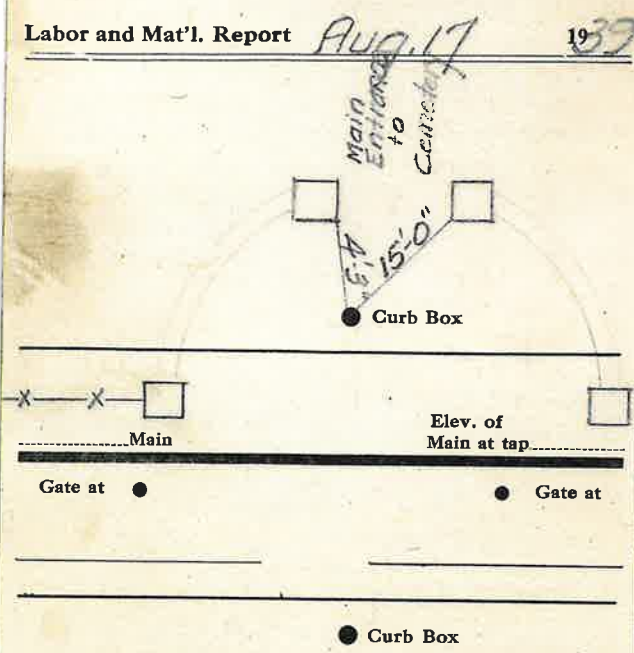
Copper	}	Connection	\$	
Lead			\$	
Curb	}	Cock Valve T. S. & V.	in. \$	
Service Box			}	\$
Old returned				
Ft. in.	}	Pipe at	\$	
Nipples			in. at	\$
Bushings			to in. at	\$
Red'g Inc'g			Couplings to in. at	\$
Union	in. at	\$		
Meter	in. at	\$		
Lead Joints	at	\$		
Leadite Joints	at	\$		
Hrs. Foreman	at	\$		
Hrs. Chauffeur	at	\$		
Hrs. Tapper	at	\$		
Hrs. Labor	at	\$		
Hrs. Labor	at	\$		
Hrs. Compressor	at	\$		
Compensation Ins.		\$		
Trucking		\$		
Builders Use of Water		\$		
		\$		
		\$		
		\$		
		\$		

St.

Bay St. Cemetery Pl. *178-218*
Ave. No.

Name of Owner

Labor and Mat'l. Report *AUG. 17* 19*39*



LABOR AND MATERIALS

1	Copper Lead	} Connection	<i>3/4</i>		\$ <i>2.80</i>
1	Curb	{ Clock Valve T. S. & V. }	<i>3/4</i>	in.	\$ <i>3.60</i>
1	Service box Old-returned	{ Short 3 1/2 X 4 1/2 Long 4 1/2 X 5 1/2 Buff or Rdway }			\$ <i>5.80</i>
70	Ft.	{ Copper Galv. Iron Cast Iron }	<i>3/4</i>	in.	Pipe at \$
1	Nipples	<i>3/4</i> in. at			\$ <i>Copper-Tulsa</i>
1	Bushings	<i>1/2</i> to <i>1 1/2</i> in. at			\$
1	Red'g In'g	{ Couplings	<i>3/4</i>	in. at	\$ <i>Copper</i>
1	Union Valve	in. at			\$ <i>1.75</i>
	Meter	in. at			\$
4	Lead Joints at	<i>9/16</i>			\$
3 1/2	Compound Joints at	<i>1/2</i> of <i>4" Pipe</i>			\$
	Hrs. Foreman at	<i>40</i> jobs			\$
2	Hrs. Chauffeur at	<i>91</i>			\$
6	Hrs. Tapper at	<i>91</i>			\$
11	Hrs. Labor at	<i>80</i>			\$
4	Hrs. Labor at	<i>SK Mech</i>			\$
2	Hrs. Compressor at				\$
	Compensation Ins.				\$
	Trucking				\$ <i>1.00</i>
	Builders Use of Water				\$
	Repairs 4" lead 2" T				\$
					\$
					\$
					\$
					\$

134- 47 ✓

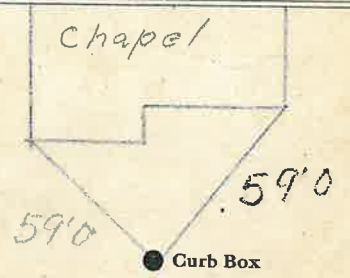
St. _____
Pl. _____
Aver. No. *178-218*

Bay

Name of Owner

Bay & Cemetery

Labor and Mat'l. Report *Oct 23* 19 *17*

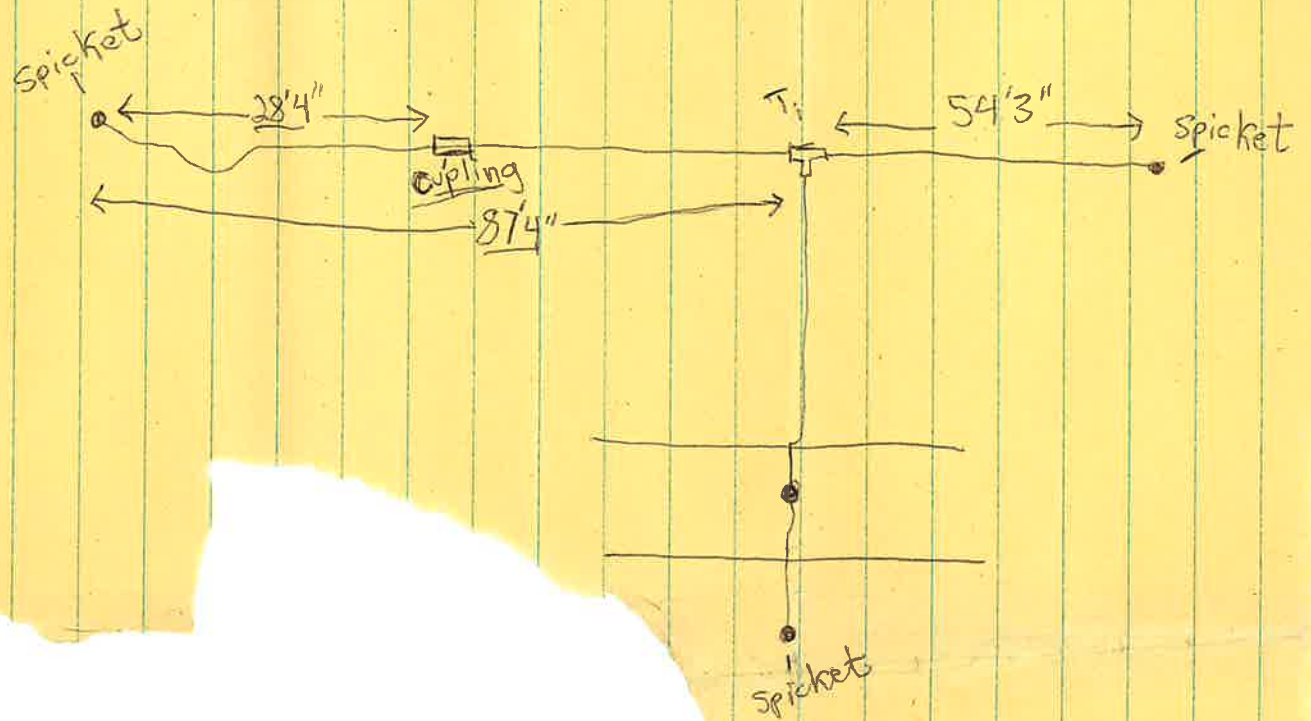


3 Main Elev. of Main at tap *6*

Gate at ● Gate at ●

● Curb Box

Cemetery Water Line



Cemetery Water Line

