

### LABOR AND MATERIALS

1	Copper Lead	} Connection	<u>3/4</u>		\$
1	Curb	} Cock Valve T.S. & V.	} <u>3/4</u> in.		\$
1	Service box Old returned	{ Short 3 1/2 x 4 1/2 Long 4 1/2 x 5 1/2 Buff or Rdway			\$
12	Ft.	in.	} <u>3/4</u> in.	Copper G.I. G.I.	} Pipe at \$
	Nipples	in.	at		\$
	Bushings	to	in.	at	\$
	Red'g Inc'g	Coupl'gs	to	in.	at \$
	Union	in.	at		\$
	Meter	in.	at		\$
	Lead Joints	at			\$
	Compound Joints	at			\$
	Maintenance Foreman				\$
	Hrs. Water Maint. Man-1	at			\$
	Hrs. Water Maint. Man-2	at			\$
	Hrs. Garage Foreman	at			\$
	Hrs. Labor	at			\$
	Hrs. Compressor	at			\$
	Compensation Ins.	at \$	per C		\$
	Trucking				\$
	Pav't Patch				\$
					\$
					\$
					\$
	O'head				\$
					\$

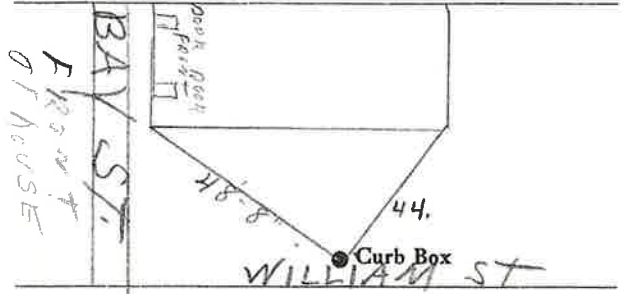
St.  
Pl. 129  
Ave. No. 129

BAY

Name of Owner TAP ON WILLIAM ST.

TAX ID # 302.16-15-29

Labor and Mat'l. Report 19



6" Main Elev. of Main at tap 5'

Gate at ● ● Gate at

● Curb Box