

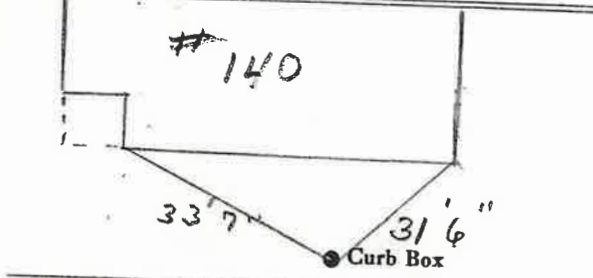
LABOR AND MATERIALS

/	Copper	}	Connection	/	"		\$	
/	Lead							
/	Curb	}	Cock	/	"		\$	
			Valve			in.		
			T.S. & V.					
/	Service box	}	Short $3\frac{1}{2} \times 4\frac{1}{2}$					
	Old returned		Long $4\frac{1}{2} \times 5\frac{1}{2}$					
			Buff or Rdway					\$
34	Ft.	}	Copper					
/	"		G.I.					
	in.		C.I.	Pipe at				\$
	Nipples		in. at				\$	
	Bushings		to in. at				\$	
	Red'g	}	Coupl'gs	to	in. at		\$	
	Inc'g							
	Union		in. at				\$	
	Meter		in. at				\$	
	Lead Joints at						\$	
	Compound Joints at						\$	
	Maintenance Foreman						\$	
	Hrs. Water Maint. Man—1 at						\$	
	Hrs. Water Maint. Man—2 at						\$	
	Hrs. Garage Foreman at						\$	
	Hrs. Labor— at						\$	
	Hrs. Compressor at						\$	
	Compensation Ins. at \$		per C				\$	
	Trucking						\$	
	Pay't Patch						\$	
							\$	
							\$	
							\$	
	O'head						\$	
							\$	

St.
 Pl.
 Ave. No. 140

BAY
 Name of Owner _____
 TAX ID # 302.16-12-14

Labor and Mat'l. Report 19



Elev. of Main at tap 5'

Gate at ● ● Gate at

● Curb Box