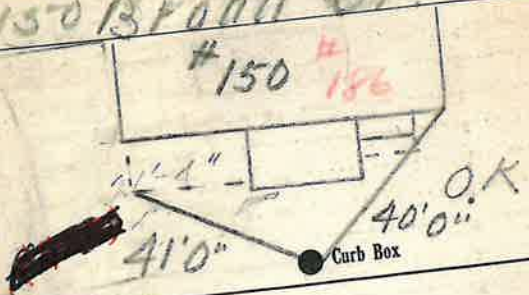


Labor and Materials

Copper } Connection.....	3	\$ 1.50
Lead } .....	4	\$ 1.70
Curb } Cock	3	\$ 1.94
} Wave		
} T.C. & V.		
Service Box } Short 3 1/2 x 4 1/2		\$ 1.95
Old returned } Long 4 1/2 x 5 1/2		
} Ben. or Rawer		
36 Ft. } in. } Copper		
} in. at } Galv. Iron		
} in. at } Cast Iron		
Nipples .....		
Bushings .....		
Red'g } Couplings.....		
Inc'g } to.....		
Union.....		
Meter.....		
Lbs. Br. Stone at .....		
Lbs. Sand at .....		
Bags Cement at .....		
Paving Brick } Mack		
} Red		
} Asphalt		
Lead Joints at .....		
Leadite Joints at .....		
5 Hrs. Foreman at .....	6.25	\$ 3.13
12 Hrs. Common Labor at .....	15.70 of 80	\$ 1.94
17 Hrs. Common Labor at .....	45	\$ 1.94
Hrs. Mason at .....		
Hrs. Masons Helper at .....		
Hrs. Compressor at .....		
Compensation Ins .....		
Trucking .....		
Builders Use of Water .....		
Measure by Hoquiam		
Total		\$ 18.51

62 34 July 27 1955  
 Labor and Material Report

150 BROAD ST



Main \_\_\_\_\_ Elev. of Main at tap \_\_\_\_\_  
 Gate at ● \_\_\_\_\_ Gate at ● \_\_\_\_\_

● Curb Box  
 Main tap to lot  
 from Suckman  
 Rollins & Co