

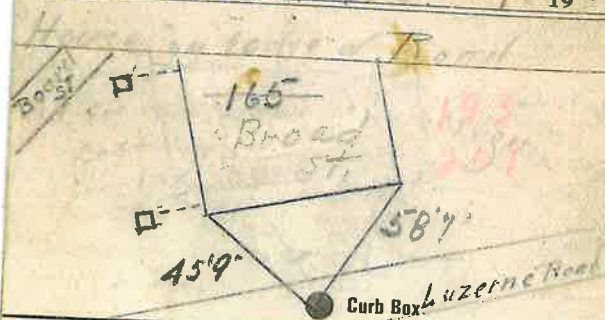
Labor and Materials

| | | |
|--|--|---------|
| Copper } Connection..... | | \$ 2.60 |
| Lead } | | |
| Curb } Cock Valve } in. 3/4 | | \$ 2.27 |
| } P-S & V. } | | |
| Service Box } Short 3/4x1 1/2 } | | \$ 1.38 |
| Old returned } Long 1 1/2x2 1/2 } | | |
| } Buff. or Rdway } | | |
| 1.0 Ft. in. } Copper } Pipe at 2/4 | | \$ 1.80 |
| } Galv. Iron } | | |
| } Cast Iron } | | |
| Nipples..... in. at..... | | \$ |
| Bushings..... to..... in. at..... | | \$ |
| Red'g } Couplings..... to..... in. at..... | | \$ |
| Inc'g } | | |
| Union..... in. at..... | | \$ |
| Meter..... in. at..... | | \$ |
| Lbs. Br. Stone at..... | | \$ |
| Lbs. Sand at..... | | \$ |
| Bags Cement 'at..... | | \$ |
| Paving Brick } Mack } at..... | | \$ |
| } Red } | | |
| } Asphalt } | | |
| Lead Joints at..... | | \$ |
| Leadite Joints at..... | | \$ |
| 2 Hrs. Foreman at..... | | \$ 1.25 |
| Hrs. Common Labor at..... | | \$ |
| Hrs. Common Labor at..... | | \$ |
| Hrs. Mason at..... | | \$ |
| Hrs. Mason's Helper at..... | | \$ |
| Hrs. Compressor at..... | | \$ |
| Compensation Ins..... | | \$.04 |
| Trucking..... | | \$ 1.- |
| Builders' Use of Water No. 100 (E.P.) | | \$ |
| Total \$ 10.24 | | |

32-4

Labor and Material Report

19



Main

Elev of Main at tap 48

Gate at ●

● Gate at

● Curb Box

Tap on Luzerne Road