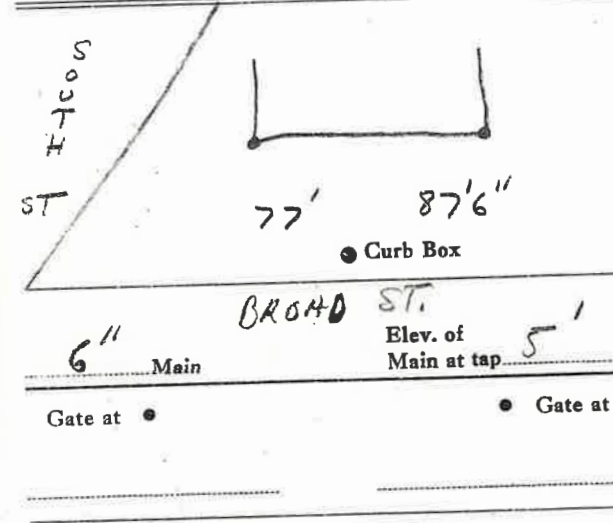


LABOR AND MATERIALS

1	Copper	} Connection	1 1/2"	\$
	Lead			
1	Curb	} Cock Valve T.C. & V.	1 1/2" in.	\$
1	Service box	} { Short 3 1/2 x 4 1/2 } Long 4 1/2 x 5 1/2 }		\$
	Old returned			
40	Ft. 1 1/2 in.	} { Copper } { Iron }	Pipe at	\$
	Nipples	in. at	\$	
	Bushings	to in. at	\$	
	Red'g	} Coupl'gs to in. at	\$	
	Inc'g			
	Union	in. at	\$	
	Meter	in. at	\$	
			\$	
	Compound Joints	at	\$	
	Maintenance Foreman		\$	
	Hrs. Water Maint. Man—1	at	\$	
	Hrs. Water Maint. Man—2	at	\$	
	Hrs. Garage Foreman	at	\$	
	Hrs. Labor—	at	\$	
	Hrs. Compressor	at	\$	
			\$	
	Trucking		\$	
	Pav't Patch		\$	
			\$	
			\$	
			\$	
			\$	

BROAD St. Ave. No. 10
 Name of Owner
 RITE AID

Labor and Mat'l. Report 1993



6" Main
 Gate at •
 Elev. of Main at tap 5'
 Gate at •

• Curb Box

TAX ID #309.28-5-4