

**Labor and Materials**

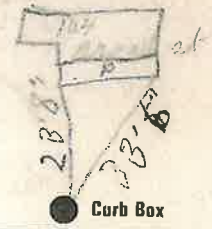
Copper } Connection.....	\$
Lead } .....	\$
1 Curb } Cock } 1 1/2 in. ....	\$
} Valve } .....	\$
} T.S. & V. } .....	\$
1 Service Box } Short 3/4x4 1/2 } .....	\$
Old-returned } Long 4 1/2x5 1/2 } .....	\$
} Buff. or Rdway } .....	\$
Ft. .... in. } Copper } Pipe at .....	\$
} Galv. Iron } .....	\$
} Cast Iron } .....	\$
1 Nipples. 3/4 in. at .....	\$
Bushings ..... to ..... in. at .....	\$
Red'g } Couplings..... to ..... in. at .....	\$
Inc'g } .....	\$
1 Union. 3/4 in. at .....	\$
Meter..... in. at .....	\$
Lbs. Br. Stone at .....	\$
Lbs. Sand at .....	\$
Bags Cement at .....	\$
Paving Brick } Mack } at .....	\$
} Red } .....	\$
} Asphalt } .....	\$
Lead Joints at .....	\$
Leadite Joints at .....	\$
Hrs. Foreman at .....	\$
Hrs. Common Labor at .....	\$
Hrs. Common Labor at .....	\$
Hrs. Mason at .....	\$
Hrs. Mason's Helper at .....	\$
Hrs. Compressor at .....	\$
Compensation Ins.....	\$
Trucking.....	\$
Builders' Use of Water .....	\$
<b>Total \$</b> .....	

**Labor and Material Report**

19 21

104 Broad St Repairs

136



Curb Box

Main

Elev of Main at tap

Gate at ●

● Gate at

● Curb Box

1994 - Disconnected -  
Bld. demolished

(over)