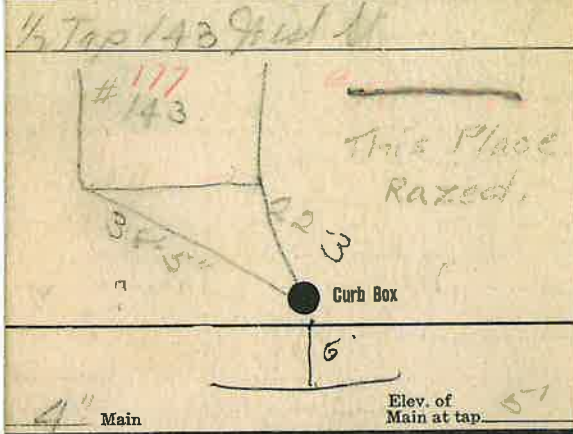


### Labor and Materials

1. Lead Connection $\frac{1}{2}$	\$
1. Curb Cock $\frac{3}{4}$	\$
1. Service Box (Short $3\frac{1}{2} \times 4\frac{1}{2}$ )	\$
Old returned (Long $4\frac{1}{2} \times 5\frac{1}{2}$ )	\$
5-3 in. G. I. Pipe at	\$
Nipples .. in. at	\$
Bushings .. to .. in. at	\$
Red'g Coup .. to .. in. at	\$
Inc'g Coup .. to .. in. at	\$
Union .. in. at	\$
Meter .. in. at	\$
Cu. Yds. Br. Stone at	\$
Cu. Yds. Sand at	\$
Bags Cement at	\$
Paving Brick (Mack Red Asphalt) at	\$
2 Hrs. Foreman at	\$
Hrs. Common Labor at	\$
Hrs. Mason at	\$
Hrs. .. at	\$
Hrs. .. at	\$
Hrs. .. at	\$
Gen. Builders' Use of Water .. at	\$
Truck .. at	\$
Truck .. at	\$
Truck .. at	\$
Truck .. at	\$
Truck .. at	\$
Total	\$ 8.24

Broad  
Labor and Material Report

Oct 11 1913



Gate at ● Gate at ●

● Curb Box

Shut off at curb  
12.5 = 47.