

### LABOR AND MATERIALS

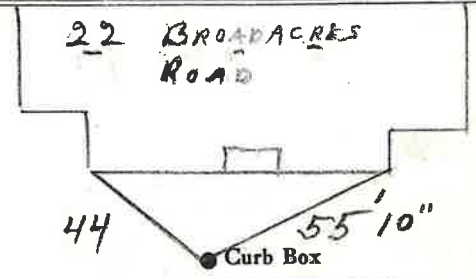
Copper	}	Connection		\$	
Lead					
Curb	}	Cock	} in.		
		Valve			
		T. S. & V.			
Service box	}	Short 3½ x 4½			
Old returned		Long 4½ x 5½			
		Buff or Rdway			
Ft. in.	}	Copper	} Pipe at		
		G. I.			
		C. I.			
Nipples		in. at			
Bushings		to in. at			
Red'g	}	Coupl'gs	to in. at		
Inc'g					
Union		in. at			
Meter		in. at			
Lead Joints		at			
Compound Joints		at			
Maintenance Foreman					
Hrs. Water Maint. Man-1		at			
Hrs. Water Maint. Man-2		at			
Hrs. Garage Foreman		at			
Hrs. Labor		at			
Hrs. Compressor		at			
Compensation Ins. at \$		per C			
Trucking					
Pav't Patch					
O'head					

St.  
Pl.  
Ave. No. 22

BROADACRES RD.

Name of Owner \_\_\_\_\_

Labor and Mat'l. Report 19 81



Main Elev. of  
Main at tap

Gate at • • Gate at

• Curb Box

REMEASURED

LABOR AND MATERIALS

*3/4" Male Adapter-53*

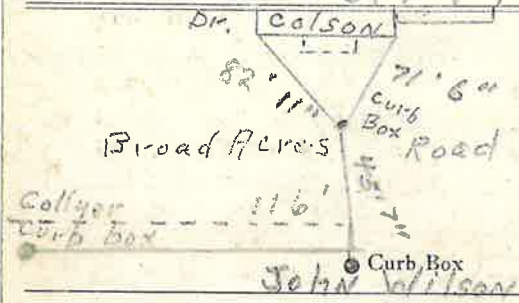
1	Copper Lead	Connection	<i>1/2" x 3/4" Tee</i>	\$	<i>60</i>
1	Curb	Cock Valve T.S. & V.	<i>3/4" in.</i>	\$	<i>3.41</i>
1	Service box	{ Short <i>3 1/2 x 4 1/2</i> Long <i>4 1/2 x 5 1/2</i> Buff or Rdway.		\$	<i>4.18</i>
	Old returned				
9	Ft.	<i>3/4" in.</i>	{ Copper G.I. G.I. } Pipe at	<i>40</i>	\$ <i>3.60</i>
	Nipples	in. at		\$	
	Bushings	to in. at		\$	
	Red'g Inc'g	Coupl'gs to in. at		\$	
	Union	in. at		\$	
	Meter	in. at		\$	
	Lead Joints	at		\$	
	Compound Joints	at		\$	
2	Maintenance Foreman		<i>1.51</i>	\$	<i>3.02</i>
	Hrs. Water Maint. Man	1 at		\$	
	Hrs. Water Maint. Man	2 at		\$	
	Hrs. Garage Foreman	at		\$	
2	Hrs. Labor	at	<i>1.13</i>	\$	<i>2.26</i>
	Hrs. Compressor	at		\$	
	Compensation Ins.	at \$ <i>3.861</i> per C.		\$	<i>20</i>
	Trucking			\$	<i>1.50</i>
	Pav't Patch			\$	
	Tap by Miller	<i>10 - 4 - 54</i>		\$	
	O'head			\$	
				\$	<i>19.30</i>

*87-54*

Broad Acres Rd. St. Pl. Ave. No. *22*

Name of Owner  
*John L. Wilson*

Labor and Mat'l. Report *Oct. 4, 1954*



*2 1/2 gal/v.* Main Elev. of Main at tap *3'*

Gate at • Gate at

• Curb Box

*Lot Tap.*