

Tap for Haviland Cove
LABOR AND MATERIALS Beach

1	Copper Lead	Connection	1"	\$
1	Curb	Cock Valve T.S. & V.	1 1/4" in.	\$
1	Service box Old returned	Short 3 1/2 x 4 1/2 Long 4 1/2 x 5 1/2 Buff or Rdway		\$
?	Ft.	Copper G.I. C.I.	1 1/4" in. Pipe at	\$
1	Nipples	1 1/4" in. at	galv.	\$
	Bushings	to in. at		\$
1	Red'g Inc'g	1 1/4" Male Adapter		\$
	Coupl'gs	to in. at		\$
	Union	in. at		\$
	Meter	in. at		\$
	Lead Joints at			\$
	Compound Joints at			\$
	Maintenance Foreman			\$
	Hrs. Water Maint. Man-1 at			\$
	Hrs. Water Maint. Man-2 at			\$
	Hrs. Garage Foreman at			\$
	Hrs. Labor— at			\$
	Hrs. Compressor at			\$
	Compensation Ins. at \$	per C		\$
	Trucking			\$
	Pav't Patch	New 1"		\$
	Tap by Larcant & Co.			\$
		12-26-67.		\$
	O'head			\$

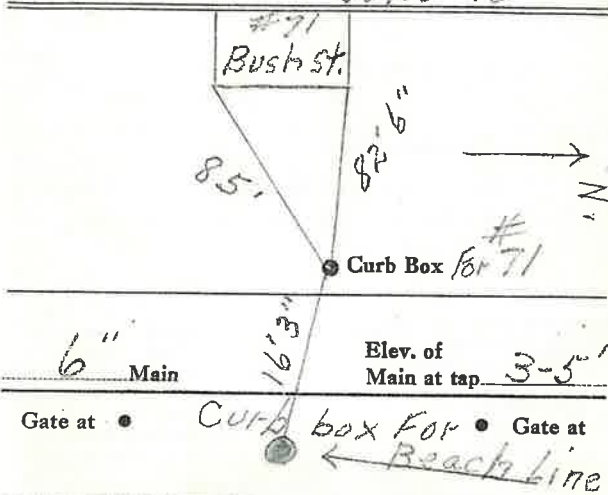
This Tap between Hydt. gate & Hydt. which is on end of 6" Main.

Tap for Haviland Cove
Beach

Bush St. St. Pl. Ave. No.

Name of Owner

Measured in Labor and Mat'l. Report June 16 1938



Curb Box For Haviland Cove Beach 1 1/4" Line.

over.