

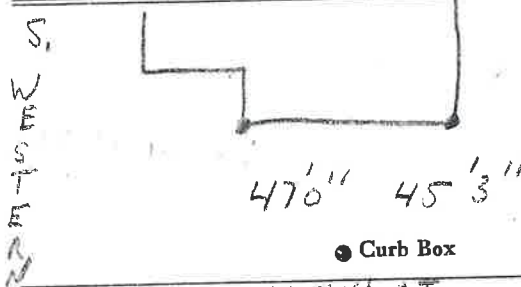
LABOR AND MATERIALS

1	Copper Lead	Connection	3/4"	\$
1	Curb	Cock Valve T.S. & V.	3/4" in.	\$
1	Service box Old returned	Short 3 1/2 x 4 1/2 Long 4 1/2 x 5 1/2 Buff or Rdway		\$
25	Ft.	Copper G.I. G.I.	3/4" in. Pipe at	\$
	Nipples	in. at		\$
	Bushings	to in. at		\$
	Red'g Inc'g	Coupl'gs to in. at		\$
	Union	in. at		\$
	Meter	in. at		\$
	Lead Joints	at		\$
	Compound Joints	at		\$
	Maintenance Foreman			\$
	Hrs. Water Maint. Man-1	at		\$
	Hrs. Water Maint. Man-2	at		\$
	Hrs. Garage Foreman	at		\$
	Hrs. Labor	at		\$
	Hrs. Compressor	at		\$
	Compensation Ins.	at \$ per C		\$
	Trucking			\$
	Pav't Patch			\$
	O'head			\$

St. Pl. Ave. No. 15
Carlton Court
 Name of Owner

DUNN

Labor and Mat'l. Report DEC 9 1955



● Curb Box

CARLTON CT

6" Main

Elev. of Main at tap 52'

Gate at ●

● Gate at

● Curb Box