

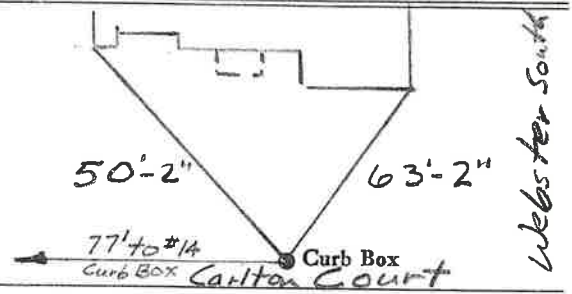
LABOR AND MATERIALS

1	Copper	} Connection	3/4"	\$	
	Lead				
1	Curb	} Cock Valve F.S. & V.	3/4 in.	\$	
1	Service box	} Short 3 1/2 x 4 1/2 Long 4 1/2 x 5 1/2 Buff or Rdway		\$	
	Old returned				
15	Ft. 3/4 in.	} Copper C.I. C.I.	Pipe at	\$	
	Nipples	in.	at	\$	
	Bushings	to	in.	at	\$
	Red'g	} Coupl'gs	to	in.	at
	Inc'g				
	Union	in.	at	\$	
	Meter	in.	at	\$	
	Lead Joints	at		\$	
	Compound Joints	at		\$	
	Maintenance Foreman			\$	
	Hrs. Water Maint. Man	1	at	\$	
	Hrs. Water Maint. Man	2	at	\$	
	Hrs. Garage Foreman		at	\$	
	Hrs. Labor		at	\$	
	Hrs. Compressor		at	\$	
	Compensation Ins.	at \$	per C	\$	
	Trucking			\$	
	Pav't Patch			\$	
	Tap by Gifford			\$	
				\$	
				\$	
	O'head			\$	
				\$	

St. Hl. Ave. No. 16
CARLTON COURT

Name of Owner

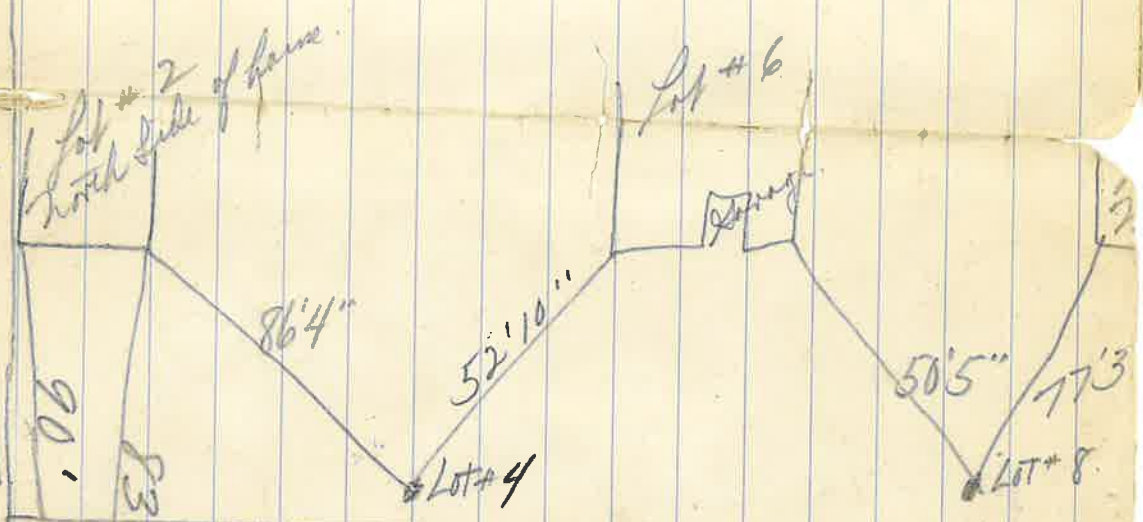
Labor and Mat'l. Report Dec-19 1973



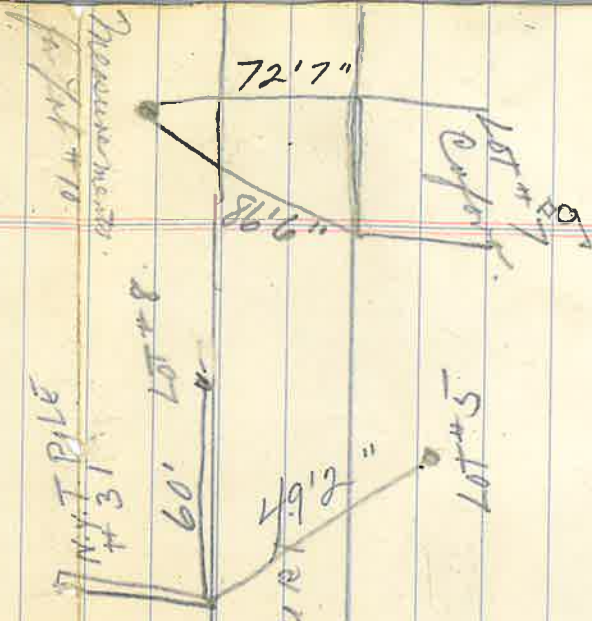
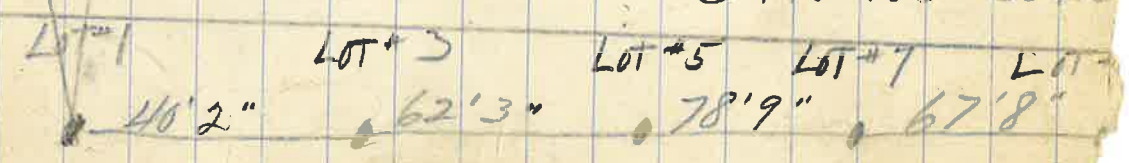
6" Main Elev. of Main at tap 5'-8"
 Gate at ● ● Gate at

● Curb Box

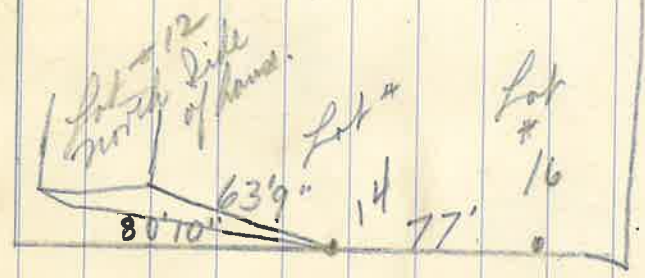
AROSE ST.



CARLTON COURT



JAMES SAWYER



Western Ave.