

CRAWDALL

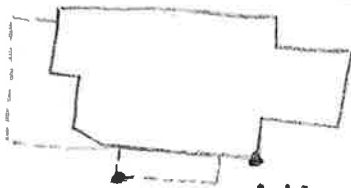
St. No. 40

Name of Owner

Labor and Mat'l. Report

AUG 3 1934

C
R
A
W
D
A
L
L



● Curb Box

ELIZABETH ST.

6" Main

Elev. of Main at tap 5'

Gate at ●

● Gate at

10' to main

● Curb Box

OLD SHUT OFF AT MAIN

LSM-SC-6-1-67

LABOR AND MATERIALS

1	Copper Lead	Connection	$\frac{3}{4}$	\$
1	Curb	Cock Valve T.S. & V.	$\frac{3}{4}$ in.	\$
1	Service box	Short $3\frac{1}{2}$ x $4\frac{1}{2}$		
	Old returned	Long $4\frac{1}{2}$ x $5\frac{1}{2}$		\$
10	Ft. $\frac{3}{4}$ in.	Copper Pipe at		\$
		C.I.		
		C.I.		
	Nipples	in. at		\$
	Bushings	to in. at		\$
	Red'g			
	Inc'g	Coupl'gs to in. at		\$
	Union	in. at		\$
	Meter	in. at		\$
				\$
	Compound Joints	at		\$
	Maintenance Foreman			\$
	Hrs. Water Maint. Man-1	at		\$
	Hrs. Water Maint. Man-2	at		\$
	Hrs. Garage Foreman	at		\$
	Hrs. Labor	at		\$
	Hrs. Compressor	at		\$
				\$
	Trucking			\$
	Pav't Patch			\$
				\$
				\$
				\$
				\$