

LABOR AND MATERIALS

1	Copper Lead	Connection	\$ 1.31
1	Curb	Cock Valve T.S. & V. $\frac{3}{4}$ in.	\$ 1.75
1	Service Box Old returned	Short $3\frac{1}{2} \times 4\frac{1}{2}$ Long $4\frac{1}{2} \times 5\frac{1}{2}$ Buff. or Rdway	\$ 1.60
8	Ft. $\frac{3}{4}$ in.	Copper Galv Iron Cast Iron	Pipe at 18 \$ 1.44
	Nipples	in. at	\$
	Bushings	to in. at	\$
	Red'g Inc'g	Couplings to in. at	\$
	Union	in. at	\$
	Meter	in. at	\$
	Lead Joints	at	\$
	Leadite Joints	at	\$
	Hrs. Foreman	at	\$
11 1/2	Hrs. Chauffeur	at 6 1/2	\$ 94
2 3/4	Hrs. Tapper	at	\$ 1.75
8	Hrs. Labor	at 45	\$ 3.60
	Hrs. Labor	at	\$
	Hrs. Compressor	at	\$
	Compensation Ins.		\$ 1.19
	Trucking		\$
	Builders Use of Water		\$
	Taply Meter		\$
			\$
			\$
			\$
			\$
			\$ 13.55

152 - 1940

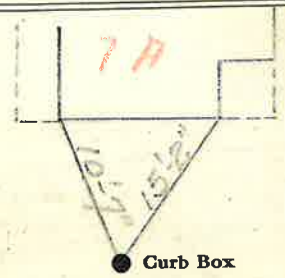
St. 7A+B
Pt.
Ave. No. 3 1/2

Name of Owner

Hayes

Labor and Mat'l. Report

OCT 18 1940 19



● Curb Box

4" galv. Main

Elev. of Main at tap 5 1/2'

Gate at ●

● Gate at

● Curb Box
2 Houses on this Tap 7A + 7B

* 7B IS A SEPARATE HOUSE ON REAR OF PROPERTY