

LABOR AND MATERIALS

1	Copper Lead	Connection ^{3/4}	\$	2.80
1	Curb	Clock Valve T. S. & V. ^{3/4} in.	\$	3.60
1	Service box Old-returned	Short 3 1/2 X 4 1/2 Long 4 1/2 X 5 1/2 Buff or Rdway	\$	5.80
12	Ft. ^{3/4} in.	Copper Galv. Iron Cast Iron	Pipe at ³⁵	\$ 4.20
	Nipples	in. at	\$	
	Bushings	to in. at	\$	
	Red'g Inc'g	Couplings to in. at	\$	
	Union	in. at	\$	
	Meter	in. at	\$	
	Lead Joints at		\$	
	Compound Joints at		\$	
7	Hrs. Foreman at	^{WMMO}	1.01 \$	7.07
9	Hrs. Chauffeur at		.91 \$	8.19
	Hrs. Tapper at		.80 \$	5.60
7	Hrs. Labor at		\$	
	Hrs. Labor at		\$	
	Hrs. Compressor at		\$	46
	Compensation Ins.		\$	1
	Trucking		\$	9.30
	Builders Use of Water		\$	
	Tap by Miller		\$	
			\$	
			\$	
			\$	
			\$	
			\$	
			\$	48.02

Dig up old Com.
no charge (labor included)

45-117

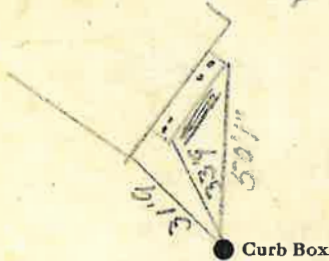
St. _____
Pl. _____ Ave. No. 37

Name of Owner

First Church Christ Scientist

Labor and Mat'l. Report

July 10 19 47



14 Main

Elev. of Main at tap 4

Gate at ●

● Gate at

TAX ID #302.15-14-15

● Curb Box