

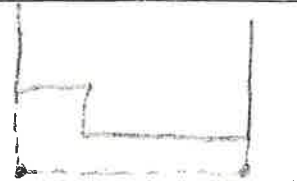
LABOR AND MATERIALS

1	Copper	} Connection ^{3/4"}	\$
	Lead		
1	Curb	} Cock Valve T.S. & V. ^{3/4"} in.	\$
1	Service box	} Short ^{3 1/2} x ^{4 1/2} Long ^{4 1/2} x ^{5 1/2}	\$
	Old returned		
26	Ft. ^{3/4"}	} Copper GT. ^{GT.} Pipe at	\$
	in.		
	Nipples	in. at	\$
	Bushings	to in. at	\$
	Red'g	} Coupl'gs. to in. at	\$
	Inc'g		
	Union	in. at	\$
	Meter	in. at	\$
	Compound Joints at		\$
	Maintenance Foreman		\$
	Hrs. Water Maint. Man—1 at		\$
	Hrs. Water Maint. Man—2 at		\$
	Hrs. Garage Foreman at		\$
	Hrs. Labor— at		\$
	Hrs. Compressor at		\$
	Trucking		\$
	Pav't Patch		\$
			\$
			\$
			\$
			\$

St. DAVIS
~~Pl.~~
 Ave. No. 8

Name of Owner
BEAUDRAULT

Labor and Mat'l. Report OCT. 22 1936



25 1/2" 11 1/6"
 ● Curb Box

4" Main Elev. of Main at tap 5'

Gate at ● Gate at

● Curb Box

OLD TAP SHUT OFF