

### LABOR AND MATERIALS

Copper	} Connection		\$	
Lead				
Curb	} Cock Valve	in.	\$	
	} T. S. & V.			
Service box	} { Short 3½ x 4½ Long 4½ x 5½ Buff or Rdway }		\$	
Old returned				
8 Ft. 1½ in.	} { Copper G.I. C.I. }	Pipe at	\$	
Nipples	in. at		\$	
Bushings	to in. at		\$	
Red'g	} Coupl'gs	to in. at	\$	
Inc'g				
Union	in. at		\$	
Meter	in. at		\$	
Lead Joints at			\$	
Compound Joints at			\$	
Maintenance Foreman			\$	
Hrs. Water Maint. Man-1 at			\$	
Hrs. Water Maint. Man-2 at			\$	
Hrs. Garage Foreman at			\$	
Hrs. Labor at			\$	
Hrs. Compressor at			\$	
Compensation Ins. at \$	per C		\$	
Trucking			\$	
Pav't Patch			\$	
			\$	
			\$	
O'head			\$	
			\$	

Division  
Line

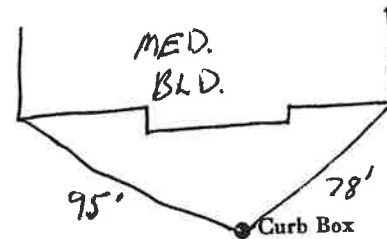
St. \_\_\_\_\_  
Pt. \_\_\_\_\_  
Ave. No. 17

Name of Owner

Iron Gate

Labor and Mat'l. Report

1986



	Elev. of
Main	Main at tap
Gate at ●	● Gate at

● Curb Box

### LABOR AND MATERIALS

Copper	}	Connection		\$	
Lead					
Curb	}	Cock	} in.		\$
		Valve			
		T. S. & V.			
Service box	}	Short 3½ x 4½			\$
Old returned		Long 4½ x 5½			
		Buff or Rdway			
Ft. 4 in.	}	Copper	} Pipe at		\$
		G. I.			
		C. I.			
Nipples		in. at			\$
Bushings		to in. at			\$
Red'g	}	Coupl'gs	to in. at		\$
Inc'g					
Union		in. at			\$
Meter		in. at			\$
Lead Joints		at			\$
Compound Joints		at			\$
Maintenance Foreman					\$
Hrs. Water Maint. Man-1		at			\$
Hrs. Water Maint. Man-2		at			\$
Hrs. Garage Foreman		at			\$
Hrs. Labor		at			\$
Hrs. Compressor		at			\$
Compensation Ins. at \$		per C.			\$
Trucking					\$
Pav't Patch					\$
					\$
					\$
					\$
O'head					\$
					\$

St.  
Pl.  
Ave. No.

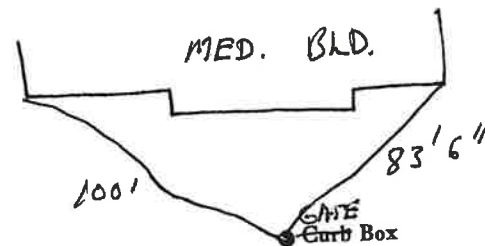
*Division*

Name of Owner

*Arroyo Center*

Labor and Mat'l. Report

1986



Main Elev. of  
Main at tap

Gate at ● ● Gate at

● Curb Box