

LABOR AND MATERIALS

1	Copper Lead	Connection	3/4"	\$	2.76	
1	Curb	Cock Valve T. S. & V.	3/4 in.	\$	3.49	
1	Service box	Short 3 1/2 X 4 1/2		\$	4.74	
	Old returned	Long 4 1/2 X 5 1/2		\$	3.50	
10	Ft. 3/4 in.	Copper Pipe at	35	\$	3.50	
		G. I. Pipe at		\$		
		C. I. Pipe at		\$		
	Nipples	in. at		\$		
	Bushings	to in. at		\$		
	Red'g			\$		
	Inc'g	Coupl'gs to in. at		\$		
	Union	in. at		\$		
	Meter	in. at		\$		
	Lead Joints	at		\$		
	Compound Joints	at		\$		
	Hrs. Water Maint. Man-1	at		\$		
3	Hrs. Water Maint. Man-2	at	1.24	\$	3.72	
16	Hrs. Labor	at	1.13	\$	18.08	
	Hrs. Labor	at		\$		
	Hrs. Compressor	at		\$		
	Compensation Ins.	at \$3.76 per C.		\$	18	
	Trucking			\$	20.1	
	Pav't Patch			\$	22.30	
	Tap by Giffard Oct 22 52				\$	
	O'head			\$	45.40	

St.
Pl.
Ave. No. 139

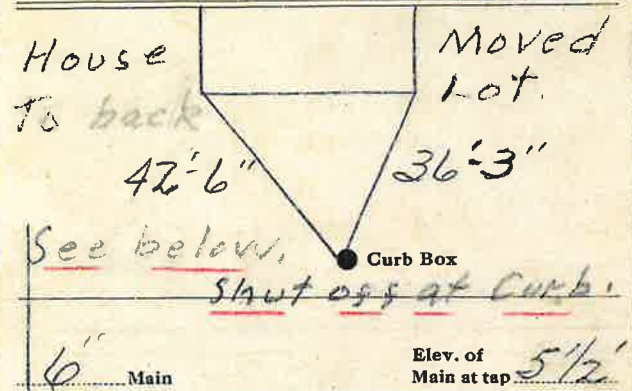
Dix

Name of Owner

RYAN.

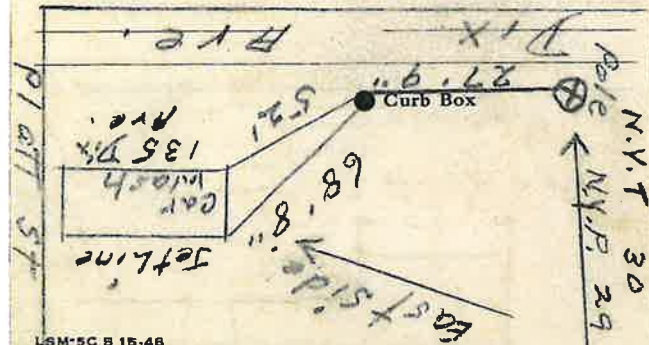
Labor and Mat'l. Report

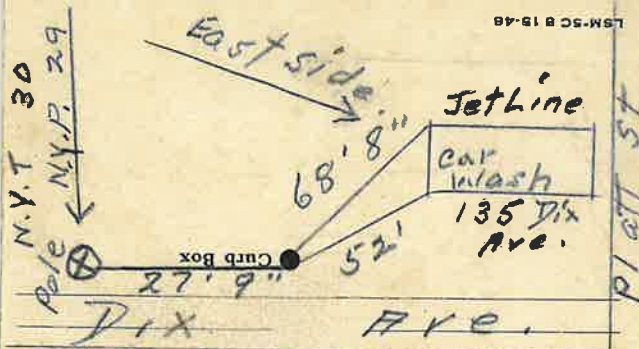
Oct 23 1952



Gate at ● ● Gate at

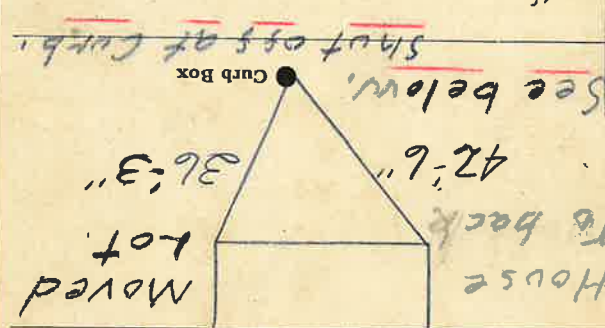
House Moved 1964





House Moved 1964. Gate at

Main Elev. of 5 1/2' Main at tap



Labor and Mat'l. Report Oct 23 1952

Name of Owner Ryan.

Dix St. Pl. Ave. No. 139