

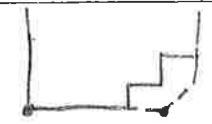
LABOR AND MATERIALS

1	Copper Lead	Connection	$\frac{3}{4}$	\$
1	Curb	Cock Valve T.S. & V.	$\frac{3}{4}$ in.	\$
1	Service box Old returned	Short $3\frac{1}{2} \times 4\frac{1}{2}$ Long $4\frac{1}{2} \times 5\frac{1}{2}$		\$
14	Ft.	$\frac{3}{4}$ in. { Copper C.I. C.I.	Pipe at	\$
	Nipples	in. at		\$
	Bushings	to in. at		\$
	Red'g Inc'g	Coupl'gs to in. at		\$
	Union	in. at		\$
	Meter	in. at		\$
	Compound Joints	at		\$
	Maintenance Foreman			\$
	Hrs. Water Maint. Man-1	at		\$
	Hrs. Water Maint. Man-2	at		\$
	Hrs. Garage Foreman	at		\$
	Hrs. Labor	at		\$
	Hrs. Compressor	at		\$
	Trucking			\$
	Pav't Patch			\$
				\$
				\$
				\$
				\$
				\$

DIX St. Ave. No. 13

Name of Owner

Labor and Mat'l. Report NOV 21 1934



49' 38'

● Curb Box

4" Main Elev. of Main at tap 5'

Gate at ● Gate at

● Curb Box

OLD SHUT OFF AT MAIN