

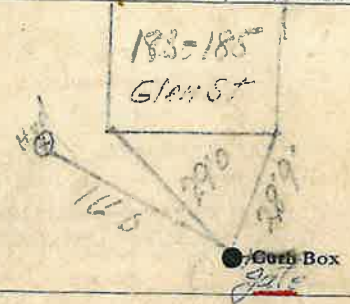
LABOR AND MATERIALS

/ Copper- } Connection 17' 0" 1941 \$  
 Lead }  
 / Curb { Clock- } 12x8 in. \$  
   { Valve }  
   { T. S. & V. }  
 / Service box { Short 3"X4" }  
 Old returned { Long 4"X5" } \$  
                   { Buff. or Rdway }  
 Ft. .... in. { Copper } Pipe at ..... \$  
                   { Galv. Iron }  
                   { Cast Iron }  
 Nipples ..... in. at ..... \$  
 Bushings ..... to ..... in. at ..... \$  
 Red'g }  
 Inc'g } Couplings ..... to ..... in. at ..... \$  
 Union ..... in. at ..... \$  
 Meter ..... in. at ..... \$  
 Lead Joints at 120 lbs lead ..... \$  
 Compound Joints at ..... \$  
 Hrs. Foreman at ..... \$  
 Hrs. Chauffeur at ..... \$  
 Hrs. Tapper at ..... \$  
 Hrs. Labor at ..... \$  
 Hrs. Labor at ..... \$  
 Hrs. Compressor at ..... \$  
 Compensation Ins. .... \$  
 Trucking ..... \$  
 Builders Use of Water ..... \$  
 Tapani Warsinski & Moginie  
 2166 ..... \$  
 ..... \$  
 ..... \$  
 ..... \$

St. \_\_\_\_\_  
 Pl. \_\_\_\_\_  
 GLEN + EXCHANGE Ave. No. \_\_\_\_\_

Name of Owner \_\_\_\_\_  
 City Glens Falls  
 Exchange St. Main

Labor and Mat'l. Report August 18 19 45



12' Main Elev. of Main at tap 41'  
 Gate at ● Gate at ●

● Curb Box  
 Exchange St  
 Gate, Glen St  
 End