

LABOR AND MATERIALS

1	Copper	} Connection	$\frac{3}{4}$	}	in.	\$		
1	Curb						Cock	$\frac{3}{4}$
		Valve						
		T.C. & V.						
1	Service box	} Short $3\frac{1}{2} \times 4\frac{1}{2}$	}	}		\$		
	Old returned						Long $4\frac{1}{2} \times 5\frac{1}{2}$	
6	Ft.	} Copper	$\frac{3}{4}$	}	in.	Pipe at.	\$	
	Nipples	in.				at	\$	
	Bushings	to				in. at	\$	
	Red'g	} Coupl'gs		}		to	in. at	\$
	Inc'g							
	Union	in.				at	\$	
	Meter	in.				at	\$	
							\$	
	Compound Joints					at	\$	
	Maintenance Foreman						\$	
	Hrs. Water Maint. Man-1					at	\$	
	Hrs. Water Maint. Man-2					at	\$	
	Hrs. Garage Foreman					at	\$	
	Hrs. Labor					at	\$	
	Hrs. Compressor					at	\$	
							\$	
	Trucking						\$	
	Pav't Patch						\$	
							\$	
							\$	
							\$	
							\$	
							\$	

FIFTH

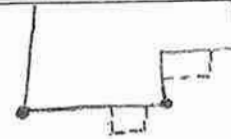
St. No. 15

Name of Owner

TAX ID # 309.12-14-19

Labor and Mat'l. Report

JUNE 17 1932



23-6 30-9

● Curb Box

4" Main

Elev. of Main at tap 5'

Gate at ●

● Gate at

● Curb Box

OLD LEAD SHUT OFF
AT MAIN