

LABOR AND MATERIALS

1	Copper	Connection	3/4"		\$ 1.31
1	Lead				
1	Curb	Cock Valve	3/4" in.		\$ 1.75
1	Service Box				
	Old returned	Short 3/2x4 1/2 Long 4/2x5 1/2 Buff. or Rdway			\$ 1.60
7	Ft.	3/4 in.			
		Copper Galv Iron Cast Iron	Pipe at		\$ 1.26
	Nipples	in. at			\$
	Bushings	to in. at			\$
	Red'g Inc'g	Couplings to in. at			\$
	Union	in. at			\$
	Meter	in. at			\$
	Lead Joints	at			\$
	Leadite Joints	at			\$
	Hrs. Foreman	at			\$
1/2	Hrs. Chauffeur	at	6 2/3		\$ 31
1	Hrs. Tapper	at	"		\$ 63
4 1/2	Hrs. Labor	at	45		\$ 203
	Hrs. Labor	at			\$
	Hrs. Compressor	at			\$
	Compensation Ins.				\$.10
	Trucking				\$ 1.00
	Builders Use of Water	no patch by iron			\$
	Tap by Demand				\$
					\$ 9.99

120 - 1940

REAR OF 211 SOUTH

St.

Pt.

Ave. No. 13

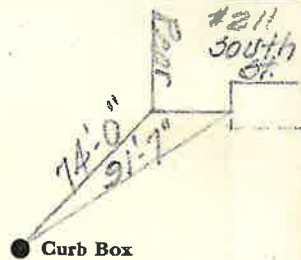
Fifth

Name of Owner

Labor and Mat'l. Report

SEP 24 1940

19



● Curb Box

4" Main

Elev. of Main at tap. 5'

Gate at ●

● Gate at

● Curb Box

Lot Tap