

LABOR AND MATERIALS

1	Copper Connection	3/4				\$ 2.94
1	Curb	Cock Valve	3/4 in.			\$ 3.71
		T. S. & V.				
1	Service box	Short 3 1/2 X 4 1/2				
	Old returned	Long 4 X 5 1/2				
		Buff or Rd way				\$ 5.90
12	Ft. 3/4 in.	Copper Pipe at	30			\$ 3.60
		G. I.				
		C. I.				
	Nipples	in. at				\$
	Bushings	to in. at				\$
	Red'g					
	Inc'g	Coupl'gs to in. at				\$
	Union	in. at				\$
	Meter	in. at				\$
	Lead Joints at					\$
	Compound Joints at					\$
	Hrs. Water Maint. Man—1 at					\$
6	Hrs. Water Maint. Man—2 at	1.02				\$ 6.12
8	Hrs. Labor— at	.91				\$ 7.28
	Hrs. Labor— at					\$
	Hrs. Compressor at					\$
	Compensation Ins. at \$	per C.				\$
	Trucking					\$ 1.00
	Pav't Patch					\$
	Traps by McGraw Hill					\$
	O'head					\$
						\$ 30.55

165

New 74

St.

Pl.

Ave. No.

Fifth

54

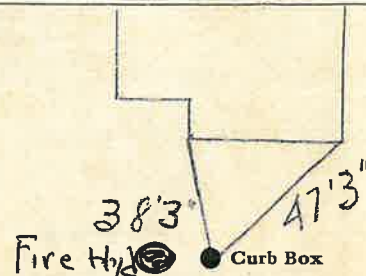
Name of Owner

Trimbley

Labor and Mat'l. Report

Dec 1

1948



6" Main

Elev. of Main at tap

5'

Gate at ●

● Gate at

● Curb Box