

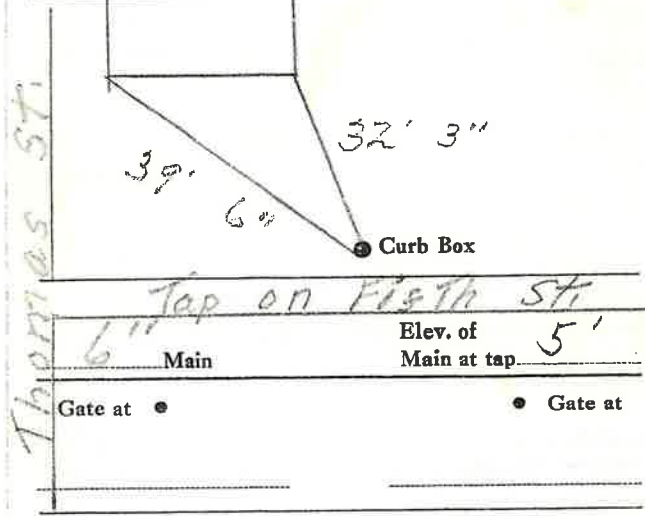
LABOR AND MATERIALS

1	Copper	} Connection	3/4"	\$	
	Lead				
1	Curb	} Cock Valve T.S. & V.	3/4 in. Oriseal	\$	
1	Service box		} { Short 3 1/2 x 4 1/2 Long 4 1/2 x 5 1/2 Buff or Rdway }		\$
	Old returned				
30	Ft.	} Copper	3/4 in.	Pipe at \$	
			} { S.F. S.F. }		
	Nipples			in. at \$	
	Bushings		to in. at \$		
	Red'g	} Coupl'gs			
	Inc'g			to in. at \$	
	Union		in. at \$		
	Meter		in. at \$		
	Lead Joints		at \$		
	Compound Joints		at \$		
	Maintenance Foreman		\$		
	Hrs. Water Maint. Man-1		at \$		
	Hrs. Water Maint. Man-2		at \$		
	Hrs. Garage Foreman		at \$		
	Hrs. Labor		at \$		
	Hrs. Compressor		at \$		
	Compensation Ins.		at \$ per C \$		
	Trucking		\$		
	Pav't Patch		\$		
	Tap by Lareau & Co.		\$		
	6-22-70.		\$		
	O'head		\$		
			\$		

St. Fifth  
 Ave. No. 91

Name of Owner Moise Choiniere

Labor and Mat'l. Report June 22 19 70



● Curb Box