

LABOR AND MATERIALS

1 Copper Lead	Connection	3/4"		\$ 1.31
1 Curb	Cock Valve	3/4" in.		\$ 1.75
1 Service Box	Short	3 1/2 x 4 1/2	}	\$ 1.60
Old returned	Long	4 1/2 x 5 1/2		
	Buff. or Rdway			
8 Ft. 3/4 in.	Copper Pipe at	18	\$ 1.44	
Nipples	in. at			\$
Bushings	to in. at			\$
Red'g Inc'g	Couplings to in. at			\$
Union	in. at			\$
Meter	in. at			\$
Lead Joints	at			\$
Leadite Joints	at			\$
Hrs. Foreman	at			\$
1/2 Hrs. Chauffeur	at	6 1/2		\$ 32
1/2 Hrs. Tapper	at			\$ 94
5 Hrs. Labor	at	45		\$ 2.25
Hrs. Labor	at			\$ 36
Hrs. Compressor	at			\$
Compensation Ins.				\$ 14
Trucking				\$ 1
Builders Use of Water	to patch			\$
	before paving			\$
<hr/>				
<i>Tap by Manual</i>				
				\$ 10.77

1 2 2 - 1940

St.

Fifth

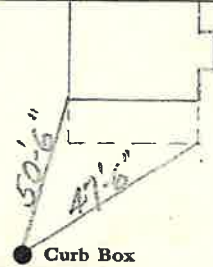
~~St.~~

Ave. No. 7

Name of Owner

Bergeron

Labor and Mat'l. Report **SEP 24 1940** 19



● Curb Box

4" Main

Elev. of
Main at tap. 5'

Gate at ●

● Gate at

● Curb Box

Old tap shut off.