

LABOR AND MATERIALS

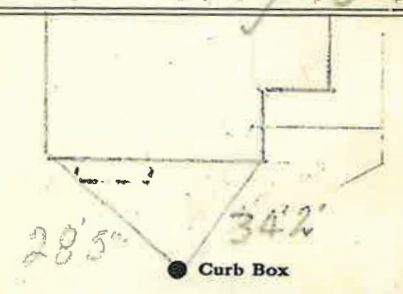
1 Copper } Connection $\frac{3}{4}$ \$ 2.80
 Lead }
 1 Curb { Cock Valve } $\frac{3}{4}$ in. \$ 3.60
 T. S. & V. }
 1 Service Box { Short $\frac{3}{2} \times \frac{4}{2}$ }
 Old returned { Long $\frac{4}{2} \times \frac{5}{2}$ } \$ 5.80
 Buff. or Rdway }
 25 Ft. $\frac{3}{4}$ in. { Copper } Pipe at 35 \$ 8.75
 { Galv. Iron }
 { Cast Iron }
 Nipples in. at \$
 Bushings to in. at \$
 Red'g } Couplings to in. at \$
 Inc'g }
 Union in. at \$
 Meter in. at \$
 Lead Joints at \$
 Leadite Joints at \$
 Hrs. Foreman at \$
 14 Hrs. Chauffeur at 91 \$ 12.74
 2 Hrs. Tapper at 91 \$ 1.82
 28 Hrs. Labor at 80 \$ 22.40
 Hrs. Labor at \$
 2 Hrs. Compressor at 87 1/2 \$ 17.5
 Compensation Ins. \$ 82
 Trucking \$ 1-
 Builders Use of Water \$ 9.30
 Top 4 Warrinsler \$
 Used $\frac{3}{4}$ Copper pipe \$
 to House \$
 \$ 70.78

94/47

St.
 Plr
 Ave. No. 19

First St
 Name of Owner
 Gettysburg

Labor and Mat'l. Report Aug 15 1941



6 Main Elev. of Main at top 5

Gate at ● Gate at ●

TAX ID # 309.12-1-14

● Curb Box

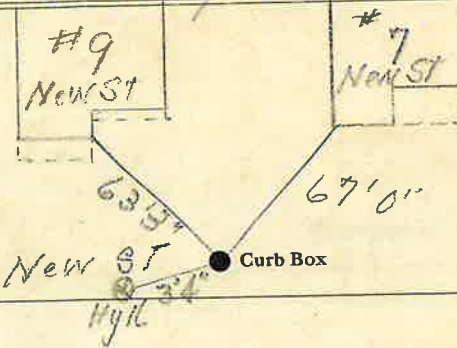
LABOR AND MATERIALS

Copper } Connection		\$
Lead }		
Curb { Clock Valve T. S. & V. }	in.	\$
Service box } Short 3 1/2 X 4 1/2 }		
Old returned } Long 4 1/2 X 5 1/2 }		\$
	Buff or Rdway	
Ft. in. } Copper Galv. Iron Cast Iron }	Pipe at	\$
Nipples	in. at	\$
Bushings	to in. at	\$
Red'g Inc'g } Couplings	to in. at	\$
Union	in. at	\$
Meter	in. at	\$
Lead Joints at		\$
Compound Joints at		\$
Hrs. Foreman at		\$
Hrs. Chauffeur at		\$
Hrs. Tapper at		\$
Hrs. Labor at		\$
Hrs. Labor at		\$
Hrs. Compressor at		\$
Compensation Ins.		\$
Trucking		\$
Builders Use of Water		\$
<i>Measure by Miller</i>		
<i>Apr 19-46</i>		
		\$
		\$
		\$
		\$
		\$

St. *First*
 Pl. *19*
 Ave. No. *19*

Name of Owner

Labor and Mat'l. Report *April 19* 19 *46*



	Main	Elev. of Main at tap
Gate at ●		● Gate at
		● Curb Box

This tap come in from New St - (1" Valve at curb)