



## LABOR AND MATERIALS

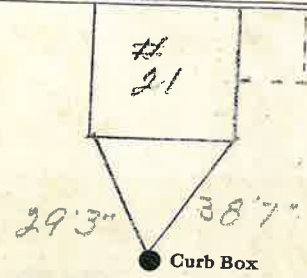
Copper } Connection	\$
Lead } Connection	\$
Curb { Clock Valve } in.	\$
{ T. S. & V. }	
Service box } Short 3 1/4 X 4 1/4 }	\$
Old returned } Long 4 1/4 X 5 1/4 }	
{ Buff or Rdway }	
Ft. .... in. } Copper } Pipe at	\$
{ Galv. Iron }	
{ Cast Iron }	
Nipples .... in. at	\$
Bushings .... to .... in. at	\$
Red'g } Couplings .... to .... in. at	\$
Inc'g }	
Union .... in. at	\$
Meter .... in. at	\$
Lead Joints at	\$
Compound Joints at	\$
Hrs. Foreman at	\$
Hrs. Chauffeur at	\$
Hrs. Tapper at	\$
Hrs. Labor at	\$
Hrs. Labor at	\$
Hrs. Compressor at	\$
Compensation Ins.	\$
Trucking	\$
Builders Use of Water	\$
<i>Measure by Worsin 12/1/02</i>	\$
	\$
	\$
	\$
	\$
	\$
	\$

*First*

St.   
 Pl.   
 Ave. No. *21*

Name of Owner

Labor and Mat'l. Report *Dec 11* 19*05*



Main Elev. of Main at tap

Gate at ● ● Gate at

**SEWER CLEAN OUT NEAR  
SIDEWALK - ROAD SIDE -  
JUST RIGHT OF WATER LINE  
12-102**