

# LABOR AND MATERIALS

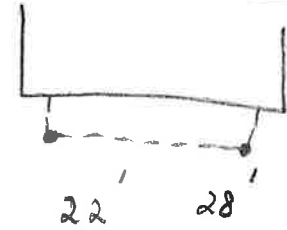
1	Copper	Connection	$\frac{3}{4}$	\$
1	Curb	Cock valve	$\frac{3}{4}$ in.	\$
1	Service box Old returned	{ Short <del>3-1/2 x 4-1/2</del> Long 4-1/2 x 5-1/2 }		\$
23	Ft.	$\frac{3}{4}$ in. { Copper }	Pipe at	\$
	Nipples		in. at	\$
	Bushings		to in. at	\$
	Red'g			\$
	Inc'g			\$
	Union		in. at	\$
	Meter		in. at	\$
				\$
	Compound Joints at			\$
	Maintenance Foreman			\$
	Hrs. Water Maint. Man - 1 at			\$
	Hrs. Water Maint. Man - 2 at			\$
	Hrs. Garage Foreman		at	\$
	Hrs. Labor		at	\$
	Hrs. Compressor at			\$
				\$
	Trucking			\$
	Pav't Patch			\$
				\$
				\$
				\$
				\$

FIRST

St. Ave. No. 27

Name of Owner

Labor and Mat'l. Report ~~33~~ JULY 19, 1929



● Curb Box

6" Main

Elev. of Main at tap 42'

Gate at ●

● Gate at

● Curb Box

OLD TAP SHUT OFF