

LABOR AND MATERIALS

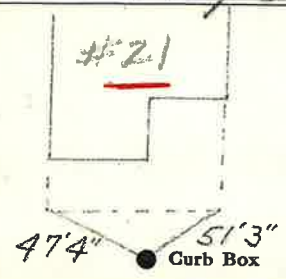
1	Copper Lead	{ Connection	3		\$ 1.23
1	Curb	{ Cock Valve T.S. & V.	3/4	in.	\$ 1.68
1	Service Box Old returned	{ Short 3/2x4 1/2 Long 4 1/2x5 1/2 Buff. or Rdway			\$ 1.54
26	Ft.	3/4 in.	{ Copper Galv. Iron Cast-Iron	Pipe at	17 \$ 4.42
	Nipples	in. at			\$
	Bushings	to in. at			\$
	Red'g Inc'g	{ Couplings	to in. at		\$
	Union	in. at			\$
	Meter	in. at			\$
	Lead Joints	at			\$
	Leadite Joints	at			\$
	Hrs. Foreman	at			\$
6	Hrs. Chauffeur	at	6 1/2		\$ 1.88
6	Hrs. Tapper	at			\$ 3.75
8	Hrs. Labor	at	4 1/2		\$ 3.60
	Hrs. Labor	at			\$
2	Hrs. Compressor	at	.65		\$ 1.30
	Compensation Ins.				\$ .28
	Trucking				\$ 1.-
	Builders Use of Water				\$
	Tap by Messer				\$
	Patch - 1/2 Sewer Dept.				\$ 2.50
					\$
					\$ 23.18

23 - 1039

St. Fourth  
 Pt. 22  
 Ave. No. 22

Name of Owner Flint

Labor and Mat'l. Report May 31 1939



6" Main Elev. of Main at tap 5'  
 Gate at ● Gate at ●

● Curb Box  
 This Tap measured  
 17 ft from #21 Fourth St.

NEWTON